

Federal University of Technology Minna
School of Environmental Technology
Department of Quantity Surveying
Examination

174

Academic Session: 2016/2017

Semester: 2nd

Course: Construction Measurement I

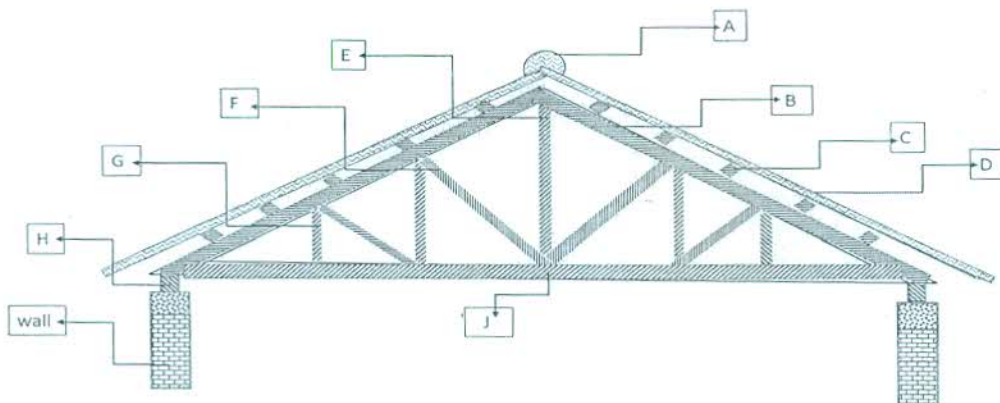
Course Code: QTS 221

Credit Units: 3

Instructions:

Time Allowed: 2 hours

- i. Answer **All** Questions,
- ii. Allowed to use BESMM3,
- iii. Use only taking off sheets **NO** answer booklets.
- iv. Ensure you write your Matriculation Number clearly on every sheet,
- v. Please **DO NOT** write your names on any sheet



DRWG. QTS221/01

Question 1: DRWG. QTS221/01 shows a roof section. Identify the following elements: A, B, C, D, E, F, G, H, J, k

Question 2: Given the span of the building at the gable end (in-to-in) to be 3600mm, width of block to be 225mm, and height of the roof to be 1500mm. Extension at each eave end is 450mm. Support your waste calculation with neat sketches.

- a. Calculate the length of rafter
- b. Calculate length of Tie beam
- c. Calculate Number of purlins @ 900mm c/c