

**COMPUTERIZATION OF CHEQUE TRANSACTIONS
IN BANKING INDUSTRY**

(A Case Study of United Bank for Africa Plc, Minna Branch)

BY

**YAHAYA MUSA
PGD/MCS/2000/2001/1047**

**DEPARTMENT OF MATHEMATICS/COMPUTER SCIENCE
FEDERAL UNIVERSITY OF TECHNOLOGY,
MINNA, NIGER STATE**

APRIL, 2002.

**COMPUTERIZATION OF CHEQUE TRANSACTIONS
IN BANKING INDUSTRY**

(A Case Study of United Bank for Africa Plc, Minna Branch)

BY

**YAHAYA MUSA
PGD/MCS/2000/2001/1047**

**A PROJECT SUBMITTED TO THE DEPARTMENT OF
MATHEMATICS/COMPUTER SCIENCE, FEDERAL UNIVERSITY
OF TECHNOLOGY, MINNA, NIGER STATE**

**IN PARTIAL FULFILLMENT OF THE REQUIREMENT FOR
THE AWARD OF POST GRADUATE DIPLOMA
IN COMPUTER SCIENCE**

APRIL, 2002.

CERTIFICATION

This is to certify that this project "Computerization of Cheque Transaction in Banking Industry (A case study of United Bank for Africa Plc, Minna)" by YAHAYA MUSA (PGD/MCS/2000/1047) has been read and meet the requirements governing the award of the Post Graduate Diploma in Computer Science of the Federal University of Technology, Minna.

Dr. Y. M. Aiyesimi
(Project Supervisor)

Date

Mr. L. N. Ezeako
(Head of Department)

Date

External Examiner

Date

DEDICATION

This project is dedicated to all the members of my family.

ACKNOWLEDGEMENTS

Thanks be to Allah, the giver of all kinds that have given me opportunity of undertaking this study.

My appreciation goes to my project supervisor in person of Dr. Y. M. Aiyesimi who deposit his tight schedules speared his time to go through the manuscript.

I am grateful to the Head of Department and all the lecturers of the department who have guided me through the course of my studies.

I am also grateful to my wife for her patience during my course work and project.

TABLE OF CONTENTS

Title page	i
Certification	ii
Dedication	iii
Acknowledgement	iv
Table of Content	v
Abstract	viii

CHAPTER ONE

1.1 General Introduction	1
1.2 Objectives of the Study	3
1.3 Scope of the Study	4
1.4 Brief History of the Bank	4
1.5 Organizational Transaction of the Cheque	5
1.6 Different types of Cheque Transactions in UBA Plc, Minna	8
1.7 Operational Transactions of the Cheque	10
1.8 Encasement of the Cheque.	11

CHAPTER TWO: FEASIBILITY STUDY

2.1 Literature Review	12
2.2 Aims of the Feasibility Study	17
2.3 Main Findings of the Feasibility Study	18
2.4 Manual System and Associated Problems	21
2.5 Data Collection	22
2.6 Data Presentation	22

CHAPTER THREE: SYSTEM ANALYSIS AND DESIGN

3.1 System Design	23
3.2 System Specification	23
3.3 Choice of Programming Language	24
3.4 Input and Output Specification	25
3.5 Database System	28
3.6 Database Structures	29
3.7 Cost and Benefit Analysis.	30

CHAPTER FOUR: GENERAL IMPLEMENTATION

4.1 System Implementation	32
4.2 Hardware and Software Requirements	32
4.3 System Installation	34

4.4 System Testing	37
4.5 System Conversion	37

CHAPTER FIVE: ACHIEVEMENT OF THE SYSTEM

5.1 Program Maintenance	39
5.2 Limitations	39
5.3 Recommendations	40
5.4 Conclusion	41
References	43

APPENDICES:

Appendix I – System Flowchart

Appendix II – Program Output

Appendix III – Program Listing

ABSTRACT

This project "Computerization of Cheque Transactions in Banking Industry, a case study of United Bank for Africa PLC (UBA), Minna was developed by researcher as a result of urgent need and call for minimization of cost and maximization of profit in Banking Industry.

The system which is typical of any computerized system, is saving less labour intensive cut down cost and also if well utilized according to the operational procedures, has a high degree accuracy.

In developing the system, the researcher was able to let user into the overall working of the system, which include how to install the system, the hardware requirements, to enable the system run successfully because not all Computer Hardware can accommodate the system. A detailed file specification table, which includes the file name, field name and field specifications.

This project is designed to guide anybody that chooses to use the system to do so without encountering difficulties due to inability to understand the basic concepts and logic behind the design.

Also, various input processing and output files have been analysed according to their modular procedures for easier understanding and maintenance.

CHAPTER ONE

1.1 GENERAL INTRODUCTION

The era of manual operations in Banking Industry is gradually being faced out and is now being replaced by computation.

Every business in general, regardless of its size or purpose, is conserved with processing facts or data about its operation in order to provide current accurate information to management and customer.

There is no gain saying it that the apparent versatility of the computer systems from the fact that so many tasks can be expressed as a series of simple and logical steps.

Sometimes we ask ourselves this question, "why has the Computer been so successfully applied to many task" the characteristics attributes listed below provide the key as it applied to the topic in question.

(a) Speed of computation and retrieval of information:

The speed of the electronic computers is such that millions of operations and calculations can take place in a

Secondary storage can be added to a computer system to enable information to be retained on a permanent basis. This information can quickly be retrieved and brought into the main memory when required.

The Banking Industry today is faced with serious competitions and no bank would want to be at the background, this is because no customers would like to do business with a bank waste his/her time.

It is indeed in the regard that the researcher decided to carry out the project, Computerization of Cheque Transactions in United Bank for Africa PLC (UBA), Minna to minimize cost and maximize profit in the banking transactions.

1.2 OBJECTIVES OF THE STUDY

The need to obtain detailed account statement of customers will be met, maintenance of the accounts in case of any changes. Data input facilities for cash cheque; credit or debt operational will also be met.

Report list, which include a list of all customers of UBA, Minna, will also be obtained.

Generally, the system will be designed with the above objectives in mind but then not strictly within their limits.

1.3 SCOPE OF THE STUDY

The scope of this study is limited to United Bank for Africa PLC, Minna, with special area consideration on the “Computerization of Cheque Transaction in Banking Industry”

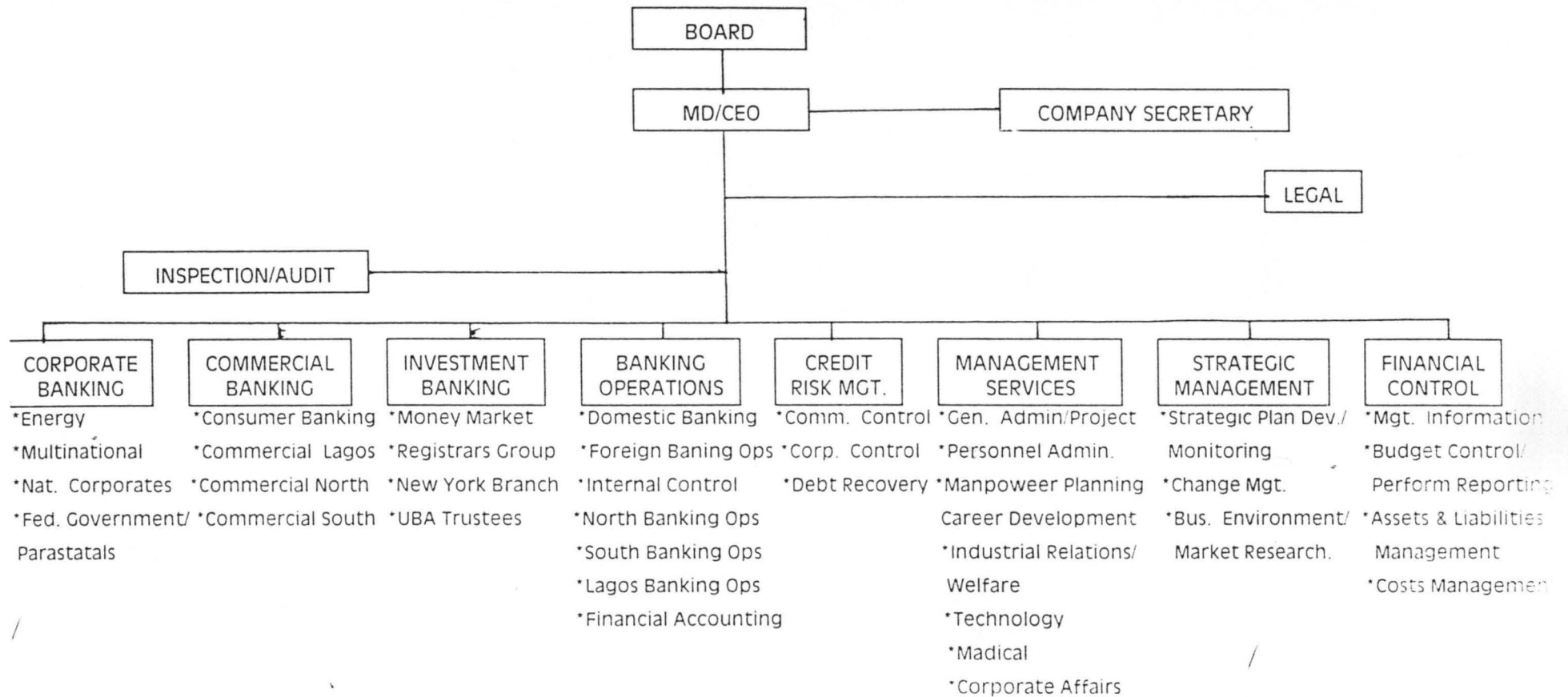
1.4 BRIEF HISTORY OF THE BANK

The United Bank for Africa Plc is one of the Nigeria three Commercial Banks. It was established in 1961 by a consortium of five (5) International Banks to over the Banking business carried on in Nigeria since 1949 by the British and French bank Limited. With an assets base of over #55 billion and over 205 branches spread over Nigeria, UBA has recorded an impressive growth over the years. UBA Plc is active in all aspects of Commercial Banking and provides international banking, trusteeship, share registration, cooperate finance and computers services through specialized divisions and subsidiaries.

4. The need for equity and balance in allocation of responsibilities are evenly allocated.
5. Need to make clear distinction between Banking operations and the marketing units and to maintain their respective focus.

Attached is the USA Plc top level Organizational Structure and their respective duties.

UBA TOP LEVEL ORGANISATIONAL STRUCTURE (APPROVED - MARCH, 1996)



1.6 DIFFERENT TYPES OF CHEQUE TRANSACTIONS IN UBA PLC, MINNA

The bank operates six (6) different types of cheque

Transactions namely: -

- A. Personal Cheque
- B. Business Cheque
- C. Government Cheque
- D. Association Cheque
- E. Bank Cheque
- F. Bank Draft

Let us look at detailed analysis of the cheque.

A. Personal Cheque:

This is a cheque drawn on a personal account that is cheque drawn on account, which is being operated by an individual.

The cheque contains the following:

- a) Date
- b) Payee name
- c) Amount in words and figure.
- d) Signature of the account holder.
- e) Cheque number.

f) Bank branch code.

B. Business cheque:

This cheque is drawn on a Business Account, that is a cheque issued by a business concerned. For example, Kris and Co. Ltd, Bank of Credit and Commerce. All information as business cheque except that the significant of account holder might be more than one, depending on its mandate with the bank. The significant may carry a seal of the significant business concerned.

C. Government Cheque:

It is a cheque that is drawn by the government on its account with the Bank. The information in the government cheque is as the same as the business concerned

D. Association Cheque:

It is a cheque that is issue by an association made payable in most cases to the treasurer of the association and payable to third parties occasionally. Examples, cheque of clubs made.

E. Bank Cheque:

It is known as the cheque drawn by a branch of a bank on itself. It is similar to any of the above-mentioned cheque except that the drawn and the drawee are the same.

This type of cheque is used to settle transactions within a locality for instance, cheque, which is issued in favour of FUTMIN, Consult in Minna as settlement.

Information contained in bank cheque is the same as in the business cheque except that, it is signed by the bank.

F. Bank Draft:

This is a cheque drawn by a branch of a bank or its head office. Example, a draft drawn on Minna branch by Kontagora branch.

Information contained in the Bank draft is like that of Bank cheque except that it is drawn from one branch on another.

1.7 OPERATIONAL TRANSACTIONS OF THE CHEQUE.

The different types of cheque mentioned, are lodged into the accounts of the payees. After lodgment, they are

batched using batch forms and they entered into the computer for processing.

However, before getting to the computer room; cheques of various bank branches are separated from those of the house cheque, then the house cheque are credited directly to the payees account. Other bank braches cheque will be for clearing. Therefore, no direct credit to the account of the payee until the cheques are cleared.

1.8 ENCASHMENT OF THE CHEQUE.

All these cheques can be cashed, depending on indication by the drawer.

CHAPTER TWO

2.1 LITERATURE REVIEW

In the last decade there has been great, expansion of use of computer in the banking industry of all types in Nigeria in particular and the world generally. But this expansion has so far produced very little published material on computerization generally, as against what is available on other fields like Transportation, Machine, Accounting, and Engineering etc. what is written on computerization of banking transaction generally is mere report on survey rather than consideration of more fundamental issues like the computerization of cheque transaction. In 1979, John Shelly and roger hunt (1984) made an attempt to put in book some facts on computer and society with some emphasis on commercial industry in which bank is includes.

In their book, computer studies a first course, they dedicated so many chapters to computers and society and the commercial industry. According to them, major technological innovations have a habit of affecting the lives of individuals.

A society is composed of individuals and these is a tendency to use this some what impersonal term "society" when we really mean ourselves and our families and friends. On balance, technology has helped the human race to become the superior members of the animal kingdom and as a result we have attained a more "comfortable" and higher form of existence than other members. A classic example is the wheel which allowed heavy goods to be transported more easily and quickly and when the superior pulling power of an ox or a horse was enlisted, with far less effort for humans.

The invention of primitive tools, especially of iron implements, enables people to manufacture goods, cut stone and dig channels in the earth to irrigate formally barren land. The fact that iron swords and the deadly horse - driven charists used in battle caused mutilation and death is more a reflection of "man's in humility to man" than a bad side- effect of primitive technology.

Printing result in the opening up of knowledge to the whole of society and raising its mind to a higher intellectual level, so that knowledge was no longer the exclusive

preserve of the few. The harnessing of water, steam and electricity to create power greater than the muscle of man led to faster movement from one place to another over land, sea, and air as well as to the mass production of goods and greater employments prospects for the majority.

However, such advances or progress can bring in their wake, certain changes in the lives of individuals and a re-organization of society which some claim is not very beneficial.

In addition to all these, we have the current technology, which led to the development of the computers. It would be naïve of us to believe that this technology will be all good or all bad. If history repeats itself as it has done through out the past, then we can expect our lives to be affected in some way. Hence, the purpose of this is to encourage you to assess the value of technological advances in the field of computers.

COMPUTER IN SOCIETY

In trying to assess the impact of computers on society, there are two points worth noting. The first is that the

incredible speed with which this form of technology has made itself felt in so many millions of computers being used in our society today. So entrenched in our society are computers that, if they could be swept away over night, the entire financial world of the west would collapse. This may serve to illustrate the second point, namely, that computers have penetrated our society for more deeply than the average man or woman can appreciate, especially when we consider the benefits of computers to the commercial world. There have been noticeable lapses here and there, take for instance, the case when we are sent repeated reminders for an invoice already paid, or our driving license is displayed because of "teaching problem" with the new computers system. Nevertheless, for better or worse, industrial societies have become dependent upon computers in a similar degree to their dependence upon electricity and the telephone system.

DEPENDENCE OF SOCIETY ON COMPUTER

The use of the term "society " above needs more explanation. What we really mean is those organizations

within society for which individuals work, for example the educational, commercial, industrial, administrative, transaction, medical, social, legal and financial world banking, insurance and credit companies which would suffer without computers countries. They form the majority of users. Indeed it is doubtful whether the financial world in particular could even survive today without assistance from computers.

Also Richard James and Philip Graham in their contributions to the companies' automation.

Much more automation is likely in the banks. It is expected that these will eventually be "automated teller machine" which will enable customers to draw money from accounts (but not overdrawn), pay bill, obtain bank statement (record of transaction) transfer money between accounts and change standing order instructions all on the authority of a plastic card (without the need for human counter clerk or teller). Cheque handling and updating of customers accounts, printing customers' statement calculating interest charge, on line enquiry system to

provide information on customers' current balance, overdrafts, interest changes and shares.

2.2 AIMS OF FEASIBILITY STUDY

Generally, feasibility study looks at the system, which is presently in operation, considering its problems and briefly looks at a range of alternative ways of doing the job. The list could include improved clerical systems as well as computer solutions. For each of these possibilities, a list of the cost and benefits is compiled and a 'recommended solution presented to the management.

In other words, feasibility study is designed to assist in choosing from among a range of alternatives rather than from two choices. Knowledge of the existing system will be developed in more detail at each succeeding stages in the System analysis and the above explanations give the conventional approach, which the researcher adopted in carrying out or conducting the feasibility study of the project. He tried to find out through an oral interview of the staff of the bank.

- (a) The operation of the system: That is whether it is operated manually or with computers.
- (b) Finding out the problem (s) with the existing system.
- (c) Knowing the cost of maintaining the old system.
- (d) Advantages of the proposed system.
- (e) Replacement of the old system with new system and the cost-benefit analysis.

2.3 MAIN FINDINGS OF THE FEASIBILITY STUDY

The project or a system such as the computerization of cheque transaction can be said to be feasible when it passes through these three tests:

- (i) Operational feasibility
- (ii) Technical feasibility
- (iii) Economical feasibility

The researcher discovered that the existing system met the three requirements with some modifications which will be taking care of in the new system and as such, the system is feasible to be operated in a computer.

The findings are:

(i) Operational Feasibility

This addresses the question of whether or not we can run the system. Are schedules for processing realistic? Can input data actually be collected, errors corrected, and the system run a schedule?

(ii) Technical Feasibility

This has to do with the existing equipment in the bank, that is to see whether they met up with the operations requirement and whether the personnel that will use the machines are competent in the application of the system.

The new system will take care of the hardware components for efficient and proper operations.

(iii) Economical Feasibility

In this aspect, we are talking about cost-benefit analysis.

In examining costs versus benefits, there are number of factors to consider, such as:

- a. Development cost
- b. Operational cost
- c. Maintenance cost

- a. Development cost refers to the actual cost of analysis, design and installation for the system.
- b. Operational cost: This is cost of operating a new system when assessing total cost.
- c. Maintenance cost: This refers to the cost of routine maintenance and enhancements. It is said that no system is ever finished, "bugs" will need repairs, and users will request periodic enhancements as they work with a system.

However, having seen the general view of the different costs and their operation, the researcher believed that the new system would reduce costs and enhance better profit for the management.

Finally, the new system will have advantage over the existing one in the areas of:

1. Reduction in clerical activity: The new system designed to reduce the operation of clerical staff particularly the cashier who is to collect manual entry, at times calculate before transferring to the computer for processing. If the old system continues to exist, it will be time consuming knowing fully well the importance of time to the bank and her customers, also, there is danger of inaccuracy.

2. Improvement in operation: The practice whereby the old system cannot correct the idea where a customer's account is credited to another customer all in the name of coding problems. The new system will eliminate this and help to check the fraud, which the old system of operation can generate.

2.4 MANUAL SYSTEM AND PROBLEMS

The operations that take place in the cheque transaction, which is the main thrust of the study, are manually operated. Below are some of the problems associated with the manual operation in the cheque transaction.

1. Delay in debiting customers' account on due date of the clearing instruments lodge into their accounts.
2. Inability of the customers to reconcile, ascertain balance and statement of their transaction properly because of the system of operation

3. Manual system of operation does not enhance bank's performance in terms of rendering quick efficient and quality services to its customers/clients.

2.5 DATA COLLECTION

Data were collected through contact with the staff using interview method.

2.6 DATA PRESENTAION

The data were presented in a precise and straightforward manner for easy understanding for the readers

CHAPTER THREE

3.1 SYSTEM DESIGN

System design is the process of planning a system or to replace or to complete an existing system. The first step towards system design is the identification of system requirement and it is followed by the formulation of their design alternatives.

3.2 SYSTEM SPECIFICATION

This is the program documentation of the proposed system. It is a collection of sorts of program responsible for the proper operations of the expected task. However, it should note that the new system was developed in modular.

This is a programming technique that requires dividing a big job into sub-programs with the aim of developing program for advantage, which is the reduction of the complexity of a program.

It therefore follows that the programs specification provides detail documentation of the entire system. It reserves as the mode of communication to the computer for

the execution of the entire task. The program specifications also serve as a means of maintaining the entire system. This could be in terms of modification or adding new facilities to the overall workings of the system.

3.3 CHOICE OF THE PROGRAMMING LANGUAGE USED

The choice of programming language is an important factor to be considered when developing a system. Visual Foxpro 6.0 is chosen due to its vast features (ideal for database systems), which brought about the existing power of database management to personal computer users. Visual Foxpro will allow bank cheque transaction data to be held as a single large collection of information that can be accessed by adding new records modifying or deleting records without changing all the application programs that refers to that data. Visual Foxpro has the ability to: categorize, sort, store and report information.

Specifically, the choice of the programming Visual FoxPro because of the following reasons:

1. It is suitable for cheque Transaction processing.
2. It is easy to use and understand

3. It is easy to make correction
4. It is easy to develop user-friendly application; hence, data entry and updating can be easily performed.

3.4 INPUT AND OUTPUT SPECIFICATION

3.4.1 INPUT SPECIFICATION

For proper execution of task, a system needs to be inputted. For this proposed system, the inputs required are the detailed of clearing instruments such as Local, Intra, and Inter clearing cheques sent for collection.

Below are the input forms required to each of the above clearing cheques.

CHEQUE PROCESSING FORM

CHEQUE PROCESSING FORM

NAME	ADITU CHRISTIANAH
ACCOUNT NUMBER	UBA0001
AMOUNT TO BE WITHDRAWN	2600.00
CHEQUE NUMBER	1
PRESENT DATE	01/02/2002

CHEQUE TRANSACTION DATA ENTRY FORM

*DATA ENTRY FORM FOR
CASHING IN TRANS ACTION*

ACCOUNT NUMBER	UBA0001
CHEQUE NUMBER	1
CHEQUE TYPE	PERSONAL
PRESENT DATE	02/01/2002
CHEQUE DATE	03/03/2002
AMOUNT DEPOSIT	5000.00
AVAILABLE AMOUNT	120000.00
CURRENT BALANCE	120000.00

Welcome to
COMPUTERISATION OF CHEQUE TRANSACTIONS
IN BANKING INDUSTRY
(A Case Study of United Bank of Africa Plc, Minna.)

A project developed by:

YAHAYA MUSA
PGD/MCS/2000/1047

MATHS/COMPUTER SCIENCE DEPARTMENT
FEDERAL UNIVERSITY OF TECHNOLOGY, MINNA
IN PARTIAL FULFILMENT FOR THE REQUIREMENT FOR THE AWARD OF
POSTGRADUATE DIPLOMA IN COMPUTER SCIENCE

3.4.2 OUTPUT SPECIFICATION

The result of any process is communicated to the users via out. This could be informing of software (Report that appear on the screen) or hardcopy (Report that appear on paper via printer). However, the reports generated for the new system could be found in appendix II.

3.5 DATABASE SYSTEM

The introduction of computers in organization and the ever-increasing sophistication of data processing system have shown the importance of data as one of the most valuable organization resources.

It is from the manipulation and interpretation of data information is generated and in turn used for decision making.

The realization of the importance of data shows that there is a need for proper management and efficient organization of dada.

Thus, a database can be defined as a mechanized shared centrally controlled collection of data used in an organization. It is regarded as any collection of useful

information organized in a systematic and consistent manner. A good example of this is the telephone directory and library catalog. Database system allows the data to be produced and organized separately from other resources.

3.6 DATABASE STRUCTURES

The database file structure is used to describe the structure of the database files required in proposed system. The structure is in terms of the field names, field width as well as the content of the files.

The proposed system is expected to operate on these database files namely process.DBF and transaction.DBF.

The structure of these files are stated below:

S/N	FIELD NAME	TYPE	WIDTH	DEC.	INDEX
1.	Name	Char	25	0	None
2.	Acct-num	Num	12	0	None
3.	Cheq-num	Num	12	0	None
4.	Amt-width	Num	12	2	None
5.	Pre-Date	Date	8	0	None
6.	Cheq-type	Char	20	0	None
7.	Amt-depo	Num	12	2	None

8.	Cle-Date	Date	8	0	None
9.	Curr-bal.	Num	12	2	None
10.	Avail-bal	Num	12	2	None

3.7 COST AND BENEFIT ANALYSIS

3.7.1 COST ANALYSIS

Introducing a new system to an organization is not always an easy task particularly in United Bank for Africa Plc, Minna which has a large network of operations. The cost of this new system will entail heavy financial commitment. Although the bank has established Information Technology and system designing departments who are charged with the responsibility of acquiring, designing, installing, implementing and maintenance of this new system in the bank.

Already computers have been acquired by the bank for the take off of the new system. The only areas that will involve more financial resources are the installation and implementation and above all training of the computer personnel or users of the new system.

No matter the cost of implementing the new system, its importance to the bank and the management cannot be over emphasized.

3.7.2 BENEFIT ANALYSIS

Successful implementation of the proposed system will enhance efficient, courteous and quality services to the bank customers and above all sustained and improve bank profitability.

CHAPTER FOUR

4.1 SYSTEM IMPLEMENTATION

The output needed is determining in the design phase and the most effective way of entering variable data into the system is only by entering necessary and detailed data from the application form. However, only authorized users can use the system. The top down approach is employed that is a method of breaking down complex problems into manageable modules or procedures. Each module is required to perform a specific task. This is the advantage of allowing for quick means of programs debugging.

4.2 SYSTEM REQUIREMENTS

For the proposed system to work effectively and with high level of reliability, the following computer configurations would be required for the new system.

The choice of the selection is purely based on the needs of the new system objectives with respect to the volume and nature of the challenges ahead.

4.2.1 HARDWARE REQUIREMENTS

The hardware configuration for the proposed system is designed to operate in window environment below is the system required to facilitate the operation of the new system.

Machine	-	IBM or compatible
Microprocessor	-	Pentium III 733 Mhz and above.
RAM	-	128Mb
Hard Disk	-	20Gb
Floppy Disk Drive	-	1.44Mb
Monitor	-	5 V.G.A
Keyboard	-	102 enhanced
Printers	-	LaserJet 1200 series
Power source	-	Uninterruptible Power Supply (UPS)

4.2.2 SOFTWARE REQUIREMENTS:

The software configurations for the proposed system is as follows:-

1. Operating System software (windows 98/ 2000).
 2. Designed software
- other application software such as

Ms Word, Ms Excel, Ms publishers, Visual Foxpro 6.0 e.t.c.

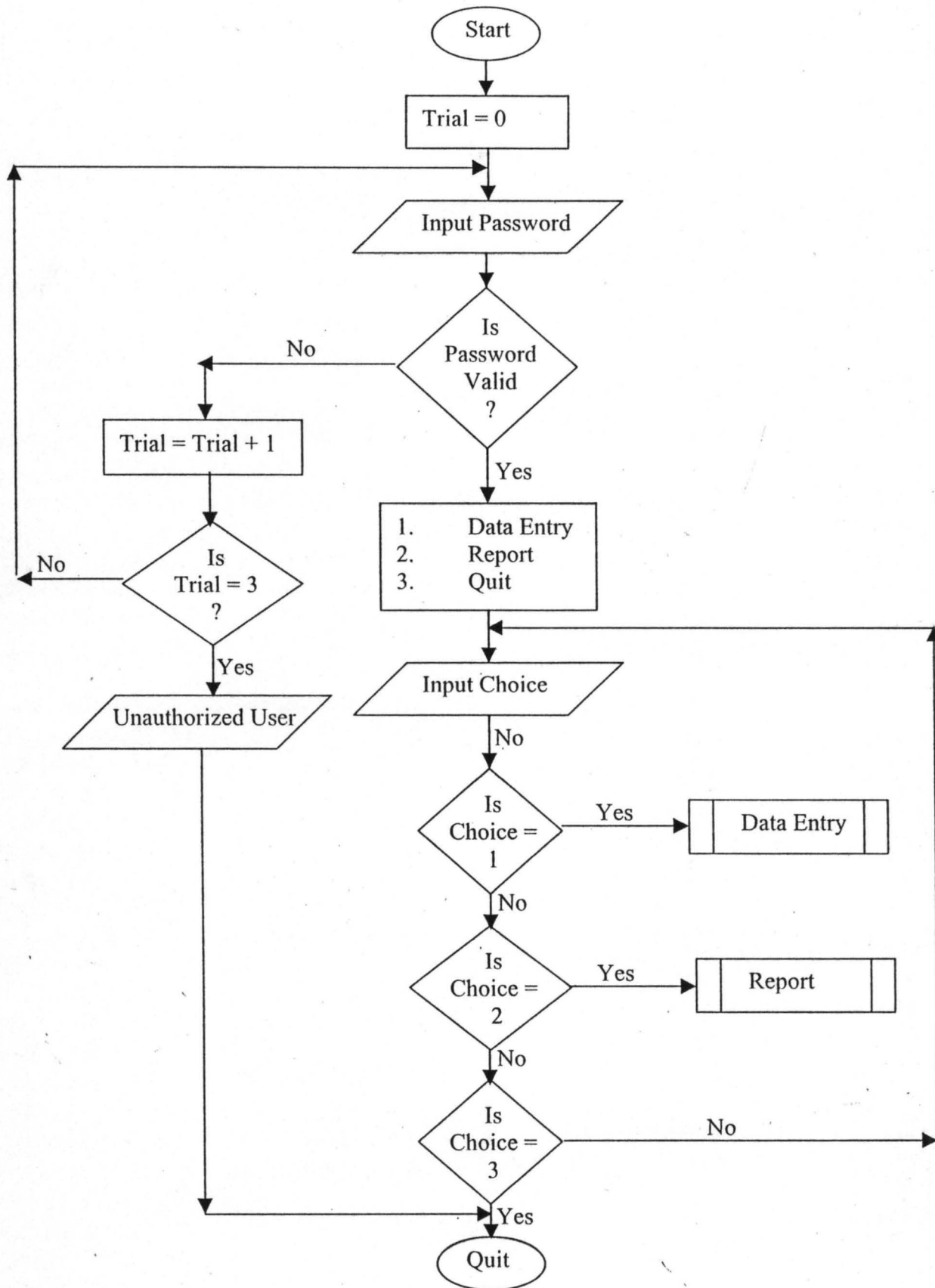
4.3 SYSTEM INSTALLATION

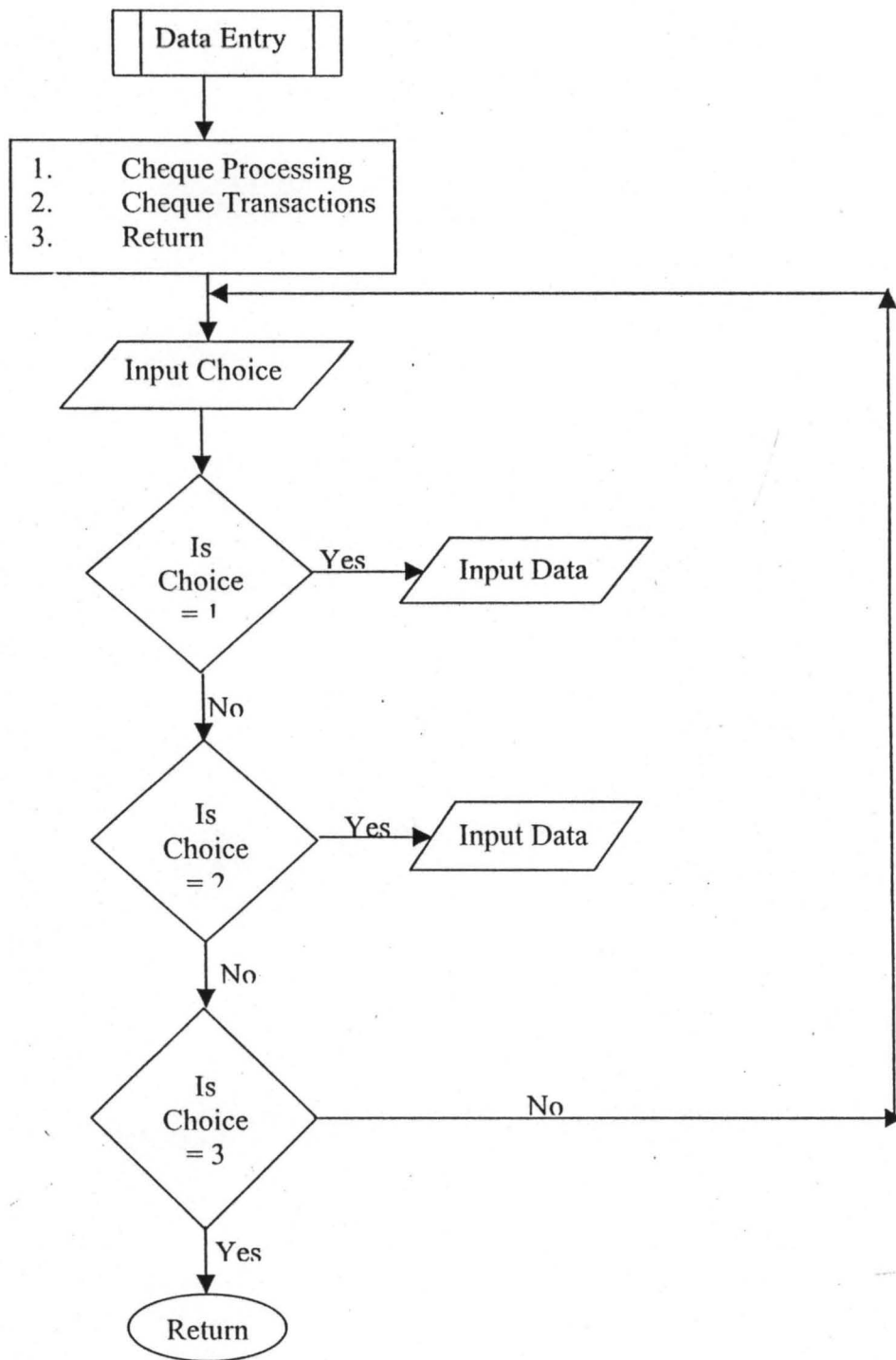
After the proposed system must have been developed and implemented, the next stage is the system installation which is the process of transforming the proposed development system into the actual computers system, that is to be used for running and processing of cheque transaction package.

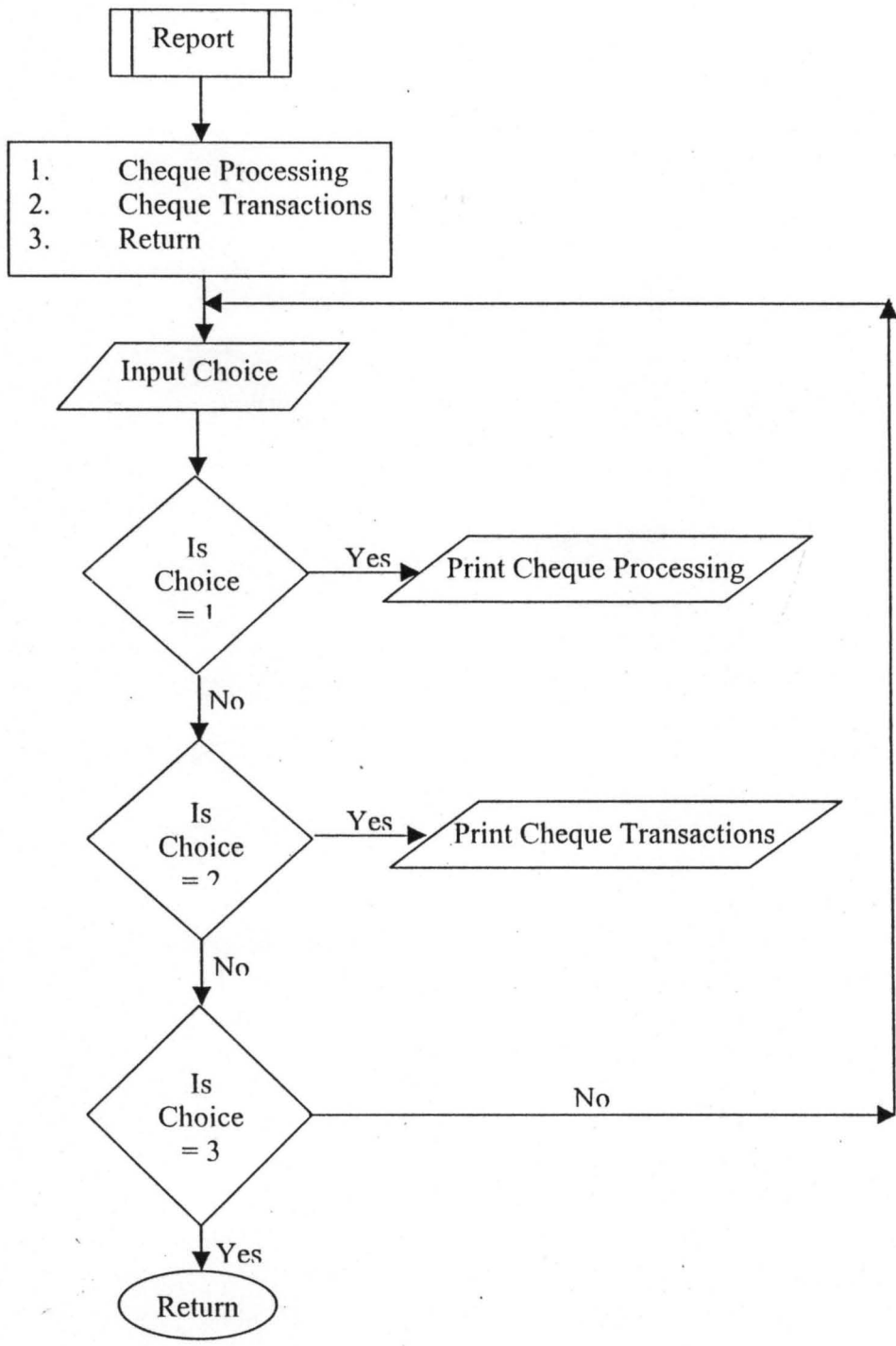
How ever, to install the system into the computers, the following steps are to be followed:

STEPS	PROCEDURE	RESULT
1. Go to start	Click	Start popup menu is displayed.
2. Run submenu	Click	Run dialog box displayed
3. Insert chequepro diskette into A:\	-	-
4. Type the source drive (A:\)	Browse	Content of A:\ displayed
5. Select set-up	Double click	Installation begins
6. Follow the instruction that Follows	Click	Installation in progress
7. Destination	-	Software installed C:\ successfully

APPENDIX I







APPENDIX II

CHEQUE TRANSACTION REPORT

04/04/02

ACCOUNT NUMBER	CHEQUE NUMBER	CHEQUE TYPE	PRESENT DATE	CLEARING DATE	AMOUNT DEPOSITED	AVAILABLE AMOUNT	CURRENT BALANCE
UBA0001	1	PERSONAL	01/02/02	03/03/02	5,000.00	120,000.00	125,000.00
UBA0002	2	PERSONAL	02/01/02	04/03/02	2,000.00	100,000.00	102,000.00
UBA0003	3	PERSONAL	02/02/02	04/04/02	2,500.00	150,000.00	152,500.00
UBA0004	4	PERSONAL	03/02/02	04/04/02	3,000.00	100,000.00	103,000.00
UBA0005	5	PERSONAL	03/03/02	05/04/02	5,000.00	120,000.00	125,000.00

UNITED BANK FOR AFRICA PLC, MINNA
CHEQUE PROCESSING REPORT

04/04/02

NAME	ACCOUNT NUMBER	CHEQUE NUMBER	PRESENT DATE	AMOUNT TO BE WITHDRAWN
ADITU CHRISTIANAH	UBA0001	1	02/01/02	2,500.00
CLEMENT STONE	UBA0002	2	03/01/02	5,000.00
MOSES EDWARD	UBA0003	3	04/01/02	2,000.00
STEPHEN MUSA	UBA0004	4	05/01/02	5,000.00
AUDU MAIRIGA	UBA0005	5	06/01/02	10,000.00
MATTHEW DANGOTE	UBA0006	6	07/01/02	5,600.00

APPENDIX III

PUBLIC oform1

```
oform1=NEWOBJECT("form1")
oform1.Show
RETURN
```

```
*-- Form:      form1 (c:\chequepro\ffirst.scx)
*-- ParentClass: form
*-- BaseClass: form
*
```

DEFINE CLASS form1 AS form

```
    Top = -10
    Left = 22
    Height = 314
    Width = 571
    DoCreate = .T.
    Picture = "wizflax.bmp"
    Caption = "CHEQUE TRANSACTIONS IN BANKING INDUSTRY"
    Icon = "..\windows\application data\microsoft\intro\metour.ico"
    Name = "Form1"
```

ADD OBJECT timer2 AS timer WITH ;

```
    Top = 192, ;
    Left = 108, ;
    Height = 23, ;
    Width = 23, ;
    Interval = 3200, ;
    Name = "Timer2"
```

ADD OBJECT timer4 AS timer WITH ;

```
    Top = 132, ;
    Left = 36, ;
    Height = 37, ;
    Width = 61, ;
    Interval = 3000, ;
    Name = "Timer4"
```

ADD OBJECT label3 AS label WITH ;

```
    AutoSize = .T., ;
    FontBold = .T., ;
    FontItalic = .F., ;
    FontSize = 14, ;
    BackStyle = 0, ;
```

```
Caption = "A project developed by:" ;  
Height = 25 ;  
Left = 193 ;  
Top = 116 ;  
Width = 222 ;  
ForeColor = RGB(128,64,0) ;  
BackColor = RGB(128,0,64) ;  
Name = "Label3"
```

```
ADD OBJECT label6 AS label WITH ;
```

```
AutoSize = .T. ;  
FontBold = .T. ;  
FontItalic = .F. ;  
FontSize = 10 ;  
BackStyle = 0 ;  
Caption = "PGD/MCS/99/" ;  
Height = 18 ;  
Left = 264 ;  
Top = 168 ;  
Width = 89 ;  
ForeColor = RGB(84,18,109) ;  
BackColor = RGB(0,64,128) ;  
Name = "Label6"
```

```
ADD OBJECT label7 AS label WITH ;
```

```
AutoSize = .T. ;  
FontBold = .T. ;  
FontItalic = .F. ;  
FontSize = 11 ;  
BackStyle = 0 ;  
Caption = "MATHS/COMPUTER SCIENCE DEPARTMENT" ;  
Height = 20 ;  
Left = 171 ;  
Top = 217 ;  
Width = 327 ;  
ForeColor = RGB(255,0,128) ;  
BackColor = RGB(0,64,128) ;  
Name = "Label7"
```

```
ADD OBJECT label8 AS label WITH ;
```

```
AutoSize = .T. ;  
FontBold = .T. ;  
FontItalic = .F. ;  
FontSize = 11 ;  
BackStyle = 0 ;  
Caption = "FEDERAL UNIVERSITY OF TECHNOLOGY , MINNA",
```

```
;
```

Height = 20, ;
Left = 152, ;
Top = 240, ;
Width = 362, ;
ForeColor = RGB(255,0,128), ;
BackColor = RGB(0,64,128), ;
Name = "Label8"

ADD OBJECT label9 AS label WITH ;
AutoSize = .T., ;
FontBold = .T., ;
FontItalic = .F., ;
FontSize = 11, ;
BackStyle = 0, ;
Caption = "IN PARTIAL FULFILMENT FOR THE REQUIREMENT
FOR THE AWARD OF ", ;
Height = 20, ;
Left = 41, ;
Top = 265, ;
Width = 527, ;
ForeColor = RGB(255,0,128), ;
BackColor = RGB(0,64,128), ;
Name = "Label9"

ADD OBJECT label10 AS label WITH ;
AutoSize = .T., ;
FontBold = .T., ;
FontItalic = .F., ;
FontSize = 11, ;
BackStyle = 0, ;
Caption = "POSTGRADUATE DIPLOMA IN COMPUTER
SCIENCE.", ;
Height = 20, ;
Left = 112, ;
Top = 284, ;
Width = 385, ;
ForeColor = RGB(255,0,128), ;
BackColor = RGB(0,64,128), ;
Name = "Label10"

ADD OBJECT label4 AS label WITH ;
AutoSize = .T., ;
FontBold = .T., ;
FontItalic = .T., ;
FontName = "Bookman Old Style", ;
FontSize = 22, ;
BackStyle = 0, ;

```
Caption = "Welcome to", ;
Height = 36, ;
Left = 217, ;
Top = 8, ;
Width = 175, ;
ForeColor = RGB(128,64,0), ;
BackColor = RGB(128,0,64), ;
Name = "Label4"
```

```
ADD OBJECT label2 AS label WITH ;
```

```
AutoSize = .T., ;
FontBold = .T., ;
FontItalic = .F., ;
FontSize = 16, ;
WordWrap = .T., ;
Alignment = 2, ;
BackStyle = 0, ;
Caption = "CHEQUE TRANSACTIONS IN BANKING INDUSTRY",
```

```
;
Height = 27, ;
Left = 17, ;
Top = 50, ;
Width = 496, ;
ForeColor = RGB(0,0,160), ;
BackColor = RGB(128,0,64), ;
Name = "Label2"
```

```
ADD OBJECT label11 AS label WITH ;
```

```
AutoSize = .T., ;
FontBold = .T., ;
FontItalic = .F., ;
FontSize = 16, ;
WordWrap = .T., ;
Alignment = 2, ;
BackStyle = 0, ;
Caption = "(A Case Study of United Bank of Africa Plc, Minna. )", ;
Height = 27, ;
Left = 28, ;
Top = 76, ;
Width = 516, ;
ForeColor = RGB(0,0,160), ;
BackColor = RGB(128,0,64), ;
Name = "Label11"
```

```
PROCEDURE timer2.Timer
    thisform.release()
ENDPROC
```

```

PROCEDURE timer4.Timer
    i = 0.025
    DO WHILE(THISFORM.WIDTH >= 0 AND THISFORM.HEIGHT >=
0)
        IF !(THISFORM.WIDTH = 0 OR THISFORM.HEIGHT = 0)
            THISFORM.WIDTH = THISFORM.WIDTH - i
            THISFORM.HEIGHT = THISFORM.HEIGHT - i
        ELSE
            THISFORM.VISIBLE = .F.
            THISFORM.RELEASE
            EXIT
        ENDIF
    ENDDO
ENDPROC

```

```

ENDDEFINE

```

```

*

```

```

*-- EndDefine: form1
.....

```

```

PUBLIC oform1

```

```

oform1=NEWOBJECT("form1")
oform1.Show
RETURN

```

```

*****

```

```

*-- Form:      form1 (c:\chequepro\flogin.scx)
*-- ParentClass: form
*-- BaseClass: form
*

```

```

DEFINE CLASS form1 AS form

```

```

    Top = 14
    Left = 92
    Height = 164
    Width = 337
    DoCreate = .T.
    Caption = "Form1"
    Icon = "metour.ico"
    Name = "Form1"

```

```

    ADD OBJECT cmdok AS commandbutton WITH ;
        Top = 123, ;
        Left = 107, ;

```

```
        return
    ENDPROC
```

```
PROCEDURE cmdclose.Click
```

```
        quit
        thisform.release()
        close all
    ENDPROC
```

```
ENDDEFINE
```

```
*
```

```
*-- EndDefine: form1
```

```
.....  
PUBLIC oform1
```

```
oform1=NEWOBJECT("form1")  
oform1.Show  
RETURN
```

```
*****
```

```
*-- Form:      form1 (c:\chequepro\process.scx)
```

```
*-- ParentClass: form
```

```
*-- BaseClass: form
```

```
*
```

```
DEFINE CLASS form1 AS form
```

```
    Top = 6
```

```
    Left = 32
```

```
    Height = 280
```

```
    Width = 453
```

```
    DoCreate = .T.
```

```
    Caption = "CHEQUE PROCESSING FORM"
```

```
    Icon = "metour.ico"
```

```
    BackColor = RGB(128,128,128)
```

```
    Name = "Form1"
```

```
    ADD OBJECT shape1 AS shape WITH ;
```

```
        Top = 36, ;
```

```
        Left = 12, ;
```

```
        Height = 193, ;
```

```
        Width = 420, ;
```

```
        Curvature = 75, ;
```

```
        BackColor = RGB(0,128,128), ;
```

```
        Name = "Shape1"
```



```
ADD OBJECT txtname AS textbox WITH ;
    Comment = "" ;
    ControlSource = "m.name" ;
    Format = "!" ;
    Height = 23 ;
    Left = 200 ;
    MaxLength = 25 ;
    TabIndex = 2 ;
    Top = 46 ;
    Width = 216 ;
    Name = "txtName"
```

```
ADD OBJECT lblname AS label WITH ;
    AutoSize = .T. ;
    FontBold = .T. ;
    WordWrap = .T. ;
    BackStyle = 0 ;
    Caption = "NAME" ;
    Left = 32 ;
    Top = 50 ;
    Width = 33 ;
    TabIndex = 1 ;
    ForeColor = RGB(0,64,128) ;
    Name = "lblName"
```

```
ADD OBJECT txtcheqnum AS textbox WITH ;
    Comment = "" ;
    ControlSource = "m.cheqnum" ;
    Height = 23 ;
    Left = 200 ;
    TabIndex = 4 ;
    Top = 149 ;
    Width = 113 ;
    Name = "txtCheqnum"
```

```
ADD OBJECT lblcheqnum AS label WITH ;
    AutoSize = .T. ;
    FontBold = .T. ;
    WordWrap = .T. ;
    BackStyle = 0 ;
    Caption = "CHEQUE NUMBER" ;
    Height = 17 ;
    Left = 32 ;
    Top = 150 ;
    Width = 99 ;
    TabIndex = 3 ;
```

```
ForeColor = RGB(0,64,128), ;  
Name = "lblCheqnum"
```

```
ADD OBJECT txtw_amt AS textbox WITH ;  
Comment = "" ;  
ControlSource = "m.w_amt", ;  
Height = 23, ;  
Left = 200, ;  
TabIndex = 6, ;  
Top = 115, ;  
Width = 114, ;  
Name = "txtW_amt"
```

```
ADD OBJECT lblw_amt AS label WITH ;  
AutoSize = .T., ;  
FontBold = .T., ;  
WordWrap = .T., ;  
BackStyle = 0, ;  
Caption = "AMOUNT TO BE WITHDRAWN", ;  
Height = 17, ;  
Left = 32, ;  
Top = 116, ;  
Width = 164, ;  
TabIndex = 5, ;  
ForeColor = RGB(0,64,128), ;  
Name = "lblW_amt"
```

```
ADD OBJECT txtacctnum AS textbox WITH ;  
Comment = "" ;  
ControlSource = "m.acctnum", ;  
Height = 23, ;  
Left = 200, ;  
MaxLength = 12, ;  
TabIndex = 8, ;  
Top = 82, ;  
Width = 112, ;  
Name = "txtAcctnum"
```

```
ADD OBJECT lblacctnum AS label WITH ;  
AutoSize = .T., ;  
FontBold = .T., ;  
WordWrap = .T., ;  
BackStyle = 0, ;  
Caption = "ACCOUNT NUMBER", ;  
Height = 17, ;  
Left = 32, ;
```

```
Top = 79, ;  
Width = 108, ;  
TabIndex = 7, ;  
ForeColor = RGB(0,64,128), ;  
Name = "lblAcctnum"
```

```
ADD OBJECT txtpres_date AS textbox WITH ;  
Comment = "", ;  
Alignment = 3, ;  
Value = {}, ;  
ControlSource = "m.pres_date", ;  
Format = "E", ;  
Height = 23, ;  
InputMask = "", ;  
Left = 200, ;  
TabIndex = 10, ;  
Top = 183, ;  
Width = 111, ;  
Name = "txtPres_date"
```

```
ADD OBJECT lblpres_date AS label WITH ;  
AutoSize = .T., ;  
FontBold = .T., ;  
WordWrap = .T., ;  
BackStyle = 0, ;  
Caption = "PRESENT DATE", ;  
Height = 17, ;  
Left = 32, ;  
Top = 182, ;  
Width = 86, ;  
TabIndex = 9, ;  
ForeColor = RGB(0,64,128), ;  
Name = "lblPres_date"
```

```
ADD OBJECT label1 AS label WITH ;  
FontBold = .T., ;  
FontSize = 11, ;  
BackStyle = 0, ;  
Caption = "CHEQUE PROCESSING FORM", ;  
Height = 24, ;  
Left = 112, ;  
Top = 12, ;  
Width = 228, ;  
ForeColor = RGB(0,0,128), ;  
Name = "Label1"
```

ADD OBJECT shape2 AS shape WITH ;

Top = 231, ;
Left = 12, ;
Height = 39, ;
Width = 433, ;
BorderWidth = 2, ;
Curvature = 15, ;
BackColor = RGB(247,236,191), ;
BorderColor = RGB(130,82,30), ;
Name = "Shape2"

ADD OBJECT cmdadd AS commandbutton WITH ;

AutoSize = .F., ;
Top = 238, ;
Left = 17, ;
Height = 25, ;
Width = 59, ;
FontBold = .T., ;
FontName = "Century Schoolbook", ;
FontSize = 9, ;
Caption = "<Add", ;
TabIndex = 10, ;
ForeColor = RGB(0,0,160), ;
Name = "cmdadd"

ADD OBJECT cmddelete AS commandbutton WITH ;

AutoSize = .F., ;
Top = 238, ;
Left = 78, ;
Height = 25, ;
Width = 59, ;
FontBold = .T., ;
FontName = "Century Schoolbook", ;
FontSize = 9, ;
Caption = "<Delete", ;
TabIndex = 11, ;
ForeColor = RGB(0,0,160), ;
Name = "cmddelete"

ADD OBJECT cmdmodify AS commandbutton WITH ;

AutoSize = .F., ;
Top = 238, ;
Left = 139, ;
Height = 25, ;
Width = 59, ;
FontBold = .T., ;
FontName = "Century Schoolbook", ;

```
FontSize = 9, ;  
Caption = "\<Modify", ;  
TabIndex = 12, ;  
ForeColor = RGB(0,0,160), ;  
Name = "cmdmodify"
```

```
ADD OBJECT cmdclose AS commandbutton WITH ;
```

```
AutoSize = .F., ;  
Top = 238, ;  
Left = 200, ;  
Height = 25, ;  
Width = 59, ;  
FontBold = .T., ;  
FontName = "Century Schoolbook", ;  
FontSize = 9, ;  
Caption = "\<Close", ;  
TabIndex = 13, ;  
ForeColor = RGB(0,0,160), ;  
Name = "cmdclose"
```

```
ADD OBJECT cmdfirst AS commandbutton WITH ;
```

```
AutoSize = .F., ;  
Top = 238, ;  
Left = 262, ;  
Height = 25, ;  
Width = 43, ;  
FontBold = .T., ;  
FontName = "Century Schoolbook", ;  
FontSize = 9, ;  
Caption = "<<", ;  
TabIndex = 14, ;  
ForeColor = RGB(0,0,160), ;  
Name = "cmdfirst"
```

```
ADD OBJECT cmdnext AS commandbutton WITH ;
```

```
AutoSize = .F., ;  
Top = 238, ;  
Left = 352, ;  
Height = 25, ;  
Width = 43, ;  
FontBold = .T., ;  
FontName = "Century Schoolbook", ;  
FontSize = 9, ;  
Caption = ">", ;  
TabIndex = 16, ;  
ForeColor = RGB(0,0,160), ;  
Name = "cmdnext"
```

ADD OBJECT cmdlast AS commandbutton WITH ;

AutoSize = .F., ;
Top = 238, ;
Left = 397, ;
Height = 25, ;
Width = 43, ;
FontBold = .T., ;
FontName = "Century Schoolbook", ;
FontSize = 9, ;
Caption = ">>", ;
TabIndex = 17, ;
ForeColor = RGB(0,0,160), ;
Name = "cmdlast"

ADD OBJECT cmdprevious AS commandbutton WITH ;

AutoSize = .F., ;
Top = 285, ;
Left = 315, ;
Height = 25, ;
Width = 43, ;
FontBold = .T., ;
FontName = "Century Schoolbook", ;
FontSize = 9, ;
Caption = "<", ;
TabIndex = 15, ;
ForeColor = RGB(0,0,160), ;
Name = "cmdprevious"

ADD OBJECT command1 AS commandbutton WITH ;

AutoSize = .F., ;
Top = 239, ;
Left = 306, ;
Height = 25, ;
Width = 44, ;
FontBold = .T., ;
FontName = "Century Schoolbook", ;
FontSize = 9, ;
Caption = "<", ;
TabIndex = 15, ;
ForeColor = RGB(0,0,160), ;
Name = "Command1"

PROCEDURE cmdadd.Click

IF THIS.CAPTION = "\<Add New"

```
THISFORM.SETALL("ReadOnly",.F.,"Textbox")
THISFORM.SETALL("ReadOnly",.F.,"ComboBox")
THISFORM.SETALL("ReadOnly",.F.,"EDITbox")
```

```
IF USED("tprocess")
    SELE tprocess
ELSE
    SELE 0
    USE tprocess
ENDIF
```

```
THISFORM.txtacctnum.SETFOCUS
THISFORM.SETALL("enabled",.F.,"commandbutton")
THIS.ENABLED = .T.
THISFORM.cmdclose.ENABLED = .T.
THISFORM.REFRESH
THIS.CAPTION = "\<Save"
```

ELSE

```
THISFORM.SETALL("ReadOnly",.T.,"Textbox")
THISFORM.SETALL("ReadOnly",.T.,"combobox")
THISFORM.SETALL("ReadOnly",.T.,"editbox")
THISFORM.SETALL("enabled",.T.,"commandbutton")
```

```
IF USED("tprocess")
    SELE tprocess
ELSE
    SELE 0
    USE tprocess
ENDIF
```

```
GO TOP
LOCATE FOR ALLTR(acctnum) = ALLTR(m.acctnum)
IF FOUND()
```

"Warning.")

```
    MESSAGEBOX("This Record Already Exists!",
```

```
    THISFORM.REFRESH
```

ELSE

```
    SCATTER MEMVAR MEMO BLANK
    INSERT INTO tprocess FROM MEMVAR
    THISFORM.REFRESH
```

ENDIF

```
THIS.CAPTION = "\<Add New"
```

ENDIF

ENDPROC

PROCEDURE cmddelete.Click

USE

USE tprocess IN 0 EXCL AGAIN

```
Height = 25, ;  
Width = 61, ;  
FontBold = .T., ;  
Caption = "\<OK", ;  
TabIndex = 3, ;  
ForeColor = RGB(128,0,0), ;  
Name = "CMDOK"
```

```
ADD OBJECT cmdclose AS commandbutton WITH ;
```

```
Top = 123, ;  
Left = 170, ;  
Height = 25, ;  
Width = 61, ;  
FontBold = .T., ;  
Caption = "\<CLOSE", ;  
TabIndex = 4, ;  
ForeColor = RGB(128,0,0), ;  
Name = "CMDCLOSE"
```

```
ADD OBJECT text1 AS textbox WITH ;
```

```
Height = 25, ;  
Left = 167, ;  
TabIndex = 1, ;  
Top = 56, ;  
Width = 101, ;  
Name = "Text1"
```

```
ADD OBJECT text2 AS textbox WITH ;
```

```
Height = 25, ;  
Left = 167, ;  
TabIndex = 2, ;  
Top = 83, ;  
Width = 101, ;  
PasswordChar = "*", ;  
Name = "Text2"
```

```
ADD OBJECT label1 AS label WITH ;
```

```
FontBold = .T., ;  
BackStyle = 0, ;  
Caption = "USER NAME", ;  
Height = 17, ;  
Left = 71, ;  
Top = 62, ;  
Width = 84, ;  
TabIndex = 5, ;  
ForeColor = RGB(64,0,0), ;
```



```
Name = "Label1"
```

```
ADD OBJECT label2 AS label WITH ;
```

```
FontBold = .T., ;  
BackStyle = 0, ;  
Caption = "PASSWORD", ;  
Height = 13, ;  
Left = 71, ;  
Top = 88, ;  
Width = 85, ;  
TabIndex = 6, ;  
ForeColor = RGB(64,0,0), ;  
Name = "Label2"
```

```
ADD OBJECT label3 AS label WITH ;
```

```
FontBold = .T., ;  
FontSize = 12, ;  
BackStyle = 0, ;  
Caption = "ENTER USER NAME AND PASSWORD", ;  
Height = 25, ;  
Left = 29, ;  
Top = 28, ;  
Width = 317, ;  
TabIndex = 7, ;  
ForeColor = RGB(128,0,128), ;  
Name = "Label3"
```

```
PROCEDURE cmdok.Click
```

```
myear = thisform.text1.value  
if upper(alltrim(thisform.text2.value)) = 'CHEQ'  
flag = 0  
thisform.release()  
do form ffirst  
else  
if trial < 3  
trial = trial + 1  
flag = 1  
messagebox('Invalid Password, Try Again','Wrong Password')  
thisform.text2.value = ""  
thisform.refresh()  
thisform.text2.setfocus  
endif  
if trial = 3 .and. flag = 1  
messagebox('Unauthorised User !','Wrong Password')  
quit  
endif  
endif
```

```
PROCEDURE cmdfirst.Click
    IF USED("tprocess")
        SELE tprocess
    ELSE
        SELE 0
        USE tprocess
    ENDIF
    IF !BOF()
        GO TOP
    ELSE
        MESSAGEBOX("This is the First Record", 0 + 64,"Warning")
    ENDIF
    SCATTER MEMVAR MEMO
    THISFORM.REFRESH
ENDPROC
```

```
PROCEDURE cmdnext.Click
    IF USED("tprocess")
        SELE tprocess
    ELSE
        SELE 0
        USE tprocess
    ENDIF
    IF !EOF()
        SKIP 1
    ELSE
        MESSAGEBOX("This is the Last Record", 0 + 64,"Warning")
    ENDIF
    SCATTER MEMVAR MEMO
    THISFORM.REFRESH
ENDPROC
```

```
PROCEDURE cmdlast.Click
    IF USED("tprocess")
        SELE tprocess
    ELSE
        SELE 0
        USE tprocess
    ENDIF
    IF !EOF()
        GO BOTTOM
    ELSE
        MESSAGEBOX("This is the Last Record", 0 + 64,"Warning")
    ENDIF
    SCATTER MEMVAR MEMO
    THISFORM.REFRESH
ENDPROC
```

```
PROCEDURE cmdprevious.Click
    IF USED("tprocess")
        SELE tprocess
    ELSE
        SELE 0
        USE tprocess
    ENDIF
    IF !BOF()
        SKIP -1
    ELSE
        MESSAGEBOX("This is the first Record", 0 + 64,"Warning")
    ENDIF
    SCATTER MEMVAR MEMO
    THISFORM.REFRESH
ENDPROC
```

```
PROCEDURE command1.Click
    IF USED("tprocess")
        SELE tprocess
    ELSE
        SELE 0
        USE tprocess
    ENDIF
    IF !BOF()
        SKIP -1
    ELSE
        MESSAGEBOX("This is the first Record", 0 + 64,"Warning")
    ENDIF
    SCATTER MEMVAR MEMO
    THISFORM.REFRESH
ENDPROC
```

ENDDEFINE

*

*-- EndDefine: form1

*Menu Section

set device to screen

clear

SET SYSMENU OFF

CLOSE ALL

CLEAR

set date to brit

set safety off

set color to w/b

set exclusive on

set date to brit

```
set century on
set status off
set talk off
```

```
clear
set path to c:\chequepro
set defa to c:\chequepro
```

```
PUBLIC MY, myear
store space(9) to myear
PUBL mdate, mno, xyr,prval,date
mdate = {/}
```

```
_screen.icon = "Metour.ico"
_screen.caption = "CHEQUE TRANSACTIONS IN BANKING INDUSTRY "
_screen.picture = "LOGO.bmp"
sele 0
do form flogin
```

```
set exact on
SET DATE TO BRIT
set century on
SET SYSMENU OFF
CLOSE ALL
CLEAR
set safety off
clear
```

```
public validck, prval
```

```
sele a
store 0 to validck
zoom window screen max
```

```
my =0
```

```
sele 1
do form ffirst
```

```
if validck <> 0
  quit
endif
set sysmenu save
set sysmenu to
do mainmenu.mpr
read events
return
```

```
Height = 25, ;  
Width = 61, ;  
FontBold = .T., ;  
Caption = "\<OK", ;  
TabIndex = 3, ;  
ForeColor = RGB(128,0,0), ;  
Name = "CMDOK"
```

ADD OBJECT cmdclose AS commandbutton WITH ;

```
Top = 123, ;  
Left = 170, ;  
Height = 25, ;  
Width = 61, ;  
FontBold = .T., ;  
Caption = "\<CLOSE", ;  
TabIndex = 4, ;  
ForeColor = RGB(128,0,0), ;  
Name = "CMDCLOSE"
```

ADD OBJECT text1 AS textbox WITH ;

```
Height = 25, ;  
Left = 167, ;  
TabIndex = 1, ;  
Top = 56, ;  
Width = 101, ;  
Name = "Text1"
```

ADD OBJECT text2 AS textbox WITH ;

```
Height = 25, ;  
Left = 167, ;  
TabIndex = 2, ;  
Top = 83, ;  
Width = 101, ;  
PasswordChar = "*", ;  
Name = "Text2"
```

ADD OBJECT label1 AS label WITH ;

```
FontBold = .T., ;  
BackStyle = 0, ;  
Caption = "USER NAME", ;  
Height = 17, ;  
Left = 71, ;  
Top = 62, ;  
Width = 84, ;  
TabIndex = 5, ;  
ForeColor = RGB(64,0,0), ;
```

```
Name = "Label1"
```

```
ADD OBJECT label2 AS label WITH ;
```

```
FontBold = .T., ;  
BackStyle = 0, ;  
Caption = "PASSWORD", ;  
Height = 13, ;  
Left = 71, ;  
Top = 88, ;  
Width = 85, ;  
TabIndex = 6, ;  
ForeColor = RGB(64,0,0), ;  
Name = "Label2"
```

```
ADD OBJECT label3 AS label WITH ;
```

```
FontBold = .T., ;  
FontSize = 12, ;  
BackStyle = 0, ;  
Caption = "ENTER USER NAME AND PASSWORD", ;  
Height = 25, ;  
Left = 29, ;  
Top = 28, ;  
Width = 317, ;  
TabIndex = 7, ;  
ForeColor = RGB(128,0,128), ;  
Name = "Label3"
```

```
PROCEDURE cmdok.Click
```

```
myear = thisform.text1.value  
if upper(alltrim(thisform.text2.value)) = 'CHEQ'  
flag = 0  
thisform.release()  
do form ffirst  
else  
if trial < 3  
trial = trial + 1  
flag = 1  
messagebox('Invalid Password, Try Again','Wrong Password')  
thisform.text2.value = ""  
thisform.refresh()  
thisform.text2.setfocus  
endif  
if trial = 3 .and. flag = 1  
messagebox('Unauthorised User !','Wrong Password')  
quit  
endif  
endif
```