

**DATABASE MANAGEMENT SYSTEM:  
AN ANALYSIS OF FEDERAL CHARACTER  
COMMISSION**

**BY**

**EZE, KENNEDY**

**PGD/MCS/2006/1205**

**DEPARTMENT OF MATHEMATICS AND  
COMPUTER SCIENCE,  
FEDERAL UNIVERSITY OF TECHNOLOGY  
MINNA**

**JANUARY 2009**

# **DATABASE MANAGEMENT SYSTEM: AN ANALYSIS OF FEDERAL CHARACTER COMMISSION**

**By**

**Eze, Kennedy**

**PGD/MCS/2006/1205**

**The Department of Mathematics and Computer  
Science,  
Federal University of Technology Minna**

**A Project Submitted to The School of Science and  
Science Education in Partial Fulfillment of the  
Requirements for the Award of a Postgraduate Diploma  
in Computer Science**

**January 2009**

***CERTIFICATION***

Database management system (DCMS): An analysis of federal character commission.  
By Eze, Kennedy meets the regulation governing the award of Post Graduate diploma in  
Computer Science of the Federal University of Technology, Minna.

-----  
Abubarkar Usman  
(Project supervisor)

-----  
sign / date

-----  
Dr. N. I. Akinwande  
(HOD) Mathematics/Computer science  
Department

-----  
sign / date

## ***DEDICATION***

This project is dedicated to the honor of God Almighty, secondly to my wife whose tremendous support and understanding is unequivocal and to my beautiful daughters, Ugochinyere and Chidinma for their unfailing love and understanding.

God bless you all.

## ***AKNOWLEDGEMENT***

I acknowledge God Almighty for his absolute grace and love towards us all.

I also wish to appreciate Mr. M Jiya, Mr. M Ndanusa, and Mr. Adamu, our dedicated Lecturers, Mr. Abraham, Mr. Shehu, Mr. Olalere, and Mr. Mike just to mention a few.

I once again acknowledge my able and supportive supervisor Abubarkar Usman, who totally committed his time and resources towards the achievement of this project, may God be with you.

My appreciation also goes to the officers for Federal Character Commission for the acceptance to allow me embark on this training program to enhance productivity and personal development.

## ***ABSTRACT***

As a result of the imbalance in the Nigerian public sector today, and the irregularity involved in the retirement age and time of retirement from service due to alteration by officers over age change and retirement status, this project was designed to look at the ways of checking these imbalances by having a database of the number of people from each state of the federation, their age and retirement status. This was done by querying the data base for the desired result. On the other hand the project has introduced the use of some security features of windows server 2003 as the server and widows XP as clients system to prevent unauthorized access to the database.

## TABLE OF CONTENT

<b>Title page</b>		<b>i</b>
<b>Certification</b>		<b>ii</b>
<b>Dedication</b>		<b>iii</b>
<b>Acknowledgement</b>		<b>iv</b>
<b>Abstract</b>		<b>v</b>
<b>Table of content</b>		<b>vi</b>
<b>Chapter one</b>		
<b>1.0</b>	<b>Introduction</b>	<b>1</b>
1.1	Evolution	1
1.2	Aims and Objective	3
1.3	Scope and Limitation	4
1.4	Significance of Study	4
1.5	Methods of Data Collection	5
<b>chapter two</b>		
<b>2.0</b>	<b>Literature Review</b>	<b>6</b>
2.1	Federal Character Commission	6
2.2	Vision	6
2.3	Mission	6
2.4	Stake holders	7
2.5	Client	7
2.6	Power of the Commission	7
2.7	Zones	8

## **Chapter three**

<b>3.0</b>	<b>System Analysis and Design</b>	<b>9</b>
3.1	Introduction	9
3.2	Analysis of existing system	9
3.3	system design	11
3.4	programming language	11
3.5	choice of programming lang.	11
3.6	input design	12
3.7	programme output	13

## **Chapter Four**

<b>4.0</b>	<b>Software and Hardware Implementation</b>	<b>20</b>
4.1	hardware requirement	20
4.2	software requirement	20
4.3	change over procedure	21
4.4	network model	21
4.5	backup and restoration	21
4.6	security measure	22
4.7	cost and benefit	22

## **Chapter five**

<b>5.0</b>	<b>Summary and Recommendation</b>	
5.1	Summaries	23
5.2	Conclusions	24
5.3	Recommendation	24
	<b>Reference</b>	<b>26</b>



# CHAPTER ONE

## 1.0 Introduction:

Federal character commission (FCC) is a federal executive body which was established

By Act no 34 of 1996, by definition 'FEDERAL CHARACTER' *'is the distinctive desire of the peoples of Nigeria to promote national unity, foster national loyalty and give every citizen of Nigeria a sense of belonging to the nation notwithstanding the diversity of ethnic origin, culture, language or religion which may exist and which is their desire to nourish and harness to the enrichment of the federal republic of Nigeria'* (1979 constitution, section 14(3))

## 1.2 Evolution:

The concept of the federal character is not a new phenomenon in our socio political life.

Before its introduction as an official policy, there was the concept of the quota

System. The later had its origin in the measure introduced during the period immediately

Preceding indolence by the colonial administration for regulating recruitment into the

Armed Forces. This in turn meant that the Forces were not dominated by a particular

Section of the society.

The policy implementation was effective and the events that unfolded immediately before

and after independence prompted some groups to start the agitation for its extension into

the federal civil service as well.

The idea became so popular that it gained recognition and was entrenched into the 1979

constitution. However it was ignored by the authorities who were supposed to

implement it.

Notwithstanding the principle remained as a vehicular device to ensure that all Nigerian

have stake in the nation. Consequently, at the 1994/95 constitutional conference its

member had a critical look at imbalances perceived and/or real and recommended the establishment of a permanent executive body to coordinate, monitor and enforce compliance to both ensuring fair and equitable distribution of socio economic amenities and infrastructural facilities as well.

1) The function of the commission shall be:

- a) to work out an equitable formula
- b) to promote, monitor and enforce compliance
- c) To take such legal measures including prosecution of heads or staff of any
- d) Organization, ministry, extra ministerial or agency.

2) To work out:

- a) An equitable formula subject to approval from the head of state for distribution of Socio – economic services, amenities and infrastructural facilities.
- b) Modalities and schemes subject to approval of the head of state for redressing the problems of imbalances and reducing the fear of relative deprivation and marginalization in the Nigerian system of federalism.
- c) Demand and receive returns on employment and socio – economic indices from any enterprise or body corporate and penalize any enterprise which does not comply with a request from the commission.

As a result of section 2(c) of the above this project concentrates on the design of a program that determines the number of staff from each state of the federation and their retirement age.

### **1.3 Aims and objective**

The aim of this project is to design a dedicated data base management system (DCMS) designed specifically for the commission to help in the capturing and analyzing the required data correctly in line with the provision of the enabling act No. 34 of 1996 to implement and enforce the principles of fairness and equity in the distribution of public post.

The existing system is manual, slow and tedious since the nominal roll is extracted by tallying which is prone to mistakes but the new system is computerized fast and the inputted nominal roll could be analyzed in a short time, the changes made are the use of a server (server 2003) and client (windows XP) based system with as with adequate networking system and security for its database (Microsoft access) as well as provide enabling windows such as login, employee records etc.

The bio-data of each individual staff should come in this format:

- a) date of birth
- b) appointment date
- c) exit date
- d) retirement date
- e) State of origin

It should also determine the number of staff from a given state and it's local government.

This will enable the analyst get a picture of the staff strength in the state, zone, and LGA

#### **1.4 Scope and Limitations:**

The scope of study is limited to the Federal Character Commission staff nominal roll.

This however can be used in analyzing other organizations since the commission

collects nominal rolls from these federal bodies and it analysis these nominal rolls and forwards the reports to the presidency.

#### **1.5 Significance of Study:**

The research work seeks to automate the manual tally system which is tedious time consuming and easy to make mistakes.

The features will enable the user to create records by way of entering new records of staff in case of employment or redeployment, store and modify records in instances of promotion or upgrade in the data base.

It also helps the administrator to modify privileges giving to the users in cases where the user has gone on leave his account is disabled and when his schedule changes new role is given to him by the administrator.

Data and already treated information can also be printed for the management to enhance further decisions.

## 1.6 Methods of Data Collection

Data is collected from federal ministries, extra ministerial departments and agencies established by the federal government.

These data is in the form of nominal rolls called “annual returns”.

Here the following information is specifically requested for and received by the commission the format below:

Name of establishment e.g. federal character commission

s/n	name	sex	Date of birth	Date of first appt.	Date of present appt.	State of origin	grade level	designation	Marital status	LGA

## **CHAPTER 2**

### **2.0 LITERATURE REVIEW**

The review of literature is to help focus attention of the study on work that has been carried out in the area under investigation.

Management is increasingly relying upon computer generated information to support decision making. The need and use of information generally is continuous in every sector of the world, an organization can achieve its goals and objectives quickly and less expensively through concise integration into database management system.

Luicas (1980) claimed that one feature that is common in almost all places of work is that the organization demand, analyze information and thereafter take action based on the interpretation of such information.

Data is defined as a raw facts and files, database is the organized collection of facts and information, typically consisting of related data files.

Without data and the ability to process it an organization would not be able to successfully complete most business activities.

There has been many works on database but so far none has focused on analysis of federal character commission.

#### **2.1 Federal Character Commissions**

The Federal Character Commission (FCC) is federal executive body established by act no 34 of 1996 to implement and enforce the federal character principles of fairness and equity in the distribution of public post socio economic amenities and infrastructure facilities among the federating units of the federal republic of Nigeria.

The provision of the 1999 constitution section 14 and 153 further empowers the commission to operate in a democratic setting.

## **2.2 Vision**

To ensure a strong virile and indivisible nation based on fairness equity and justice.

## **2.3 Mission**

To foster a sense of belonging amongst all Nigerians through:

- i) Equitable sharing of post in the public service without sacrificing merit.
- ii) Fair distribution of socio economic amenities to ensure even development
- iii) among the federating unit of Nigeria.

## **2.4 Stake Holders**

The Nigerian public, federal, state, fct, local government authorities, government establishments, civil societies, labour unions, and indigenous communities as entrenched in the enabling act.

## **2.5 Client**

The three tiers of government and the public service nationwide.

These include:

MDA's, public institutions, corporations, as well, as aggrieved citizens.

## **2.6 Power of the Commission**

The commission shall have power to:

- a) formulate and provide guidelines for government agencies, and other employers
- b) and providers of services and socio economic amenities,

- c) Monitor compliance with guidelines and formulae at the federal, state, local and
- d) zonal levels in the employment and provision of socio economic amenities.
- e) Enforce compliance with guidelines and formulae in areas of employment
- f) opportunities, distribution of infrastructural facilities, socio economic amenities and other indices.

## **2.7 Zones**

The six geo political zones shall each consist of the following states:

- a) NORTH CENTRAL:  
Benue, Fct, Kogi, Kwara, Nassarawa, Niger and Plateau
- b) NORTH EAST  
Adamawa, Bauchi, Bornu, Gombe, Taraba, Yobe.
- c) NORTH WEST  
Jigawa, Kano, Kaduna, Katsina, Kebbi, Sokoto, and Zamfara
- e) SOUTH EAST  
Abia, Imo, Enugu, Ebonyi and Anambra.
- f) SOUTH SOUTH  
Bayelsa, Delta, Edo, Rivers, Cross River and Akwa Ibom
- f) SOUTH WEST  
Ekitti, Lagos, Oyo, Osun, Ogun and Ondo.

The commission shall also have state offices in all the 36 states of the federation



and fct for effective monitoring of activities in all parts of the country.

The commission's executive chairman, board members and the secretary are

Appointed by head of state; represent each state of the federation and fct.

## **CHAPTER THREE**

### **3.0 SYSTEM ANALYSIS AND DESIGN**

#### **3.1 Introduction:**

This is a detailed study of current system leading to the development or modification of a new system.

Research work has not been carried out in this area of study so this is the first time this kind of project is being undertaken, however there is room for improvement.

System analysis may be defined as the methods of determining how best to use computers with other resources to perform tasks which meet the information needs of an organization.

#### **3.2 Analysis of Existing System**

In this phase of analysis our job is to mainly ask questions to the end user, do research and come out with a preliminary plan.

We need to determine the organization's objectives and what the program tends to achieve.

In researching, the following questions require answers and the following procedures need to be undertaken:

- 1) Read internal documentations of the organization
- 2) Read external documentations of the organization

- 3) Interview important executives within the organization
- 4) Interview key users.
- 5) Interview clients and customers/providers of information to the organization.

After the documentation stages we find out:

- 1) How the organization carries out its function
- 2) Their values, attitudes, goals and practices.

With an overview and understanding of the goals of the organization we may decide to leave the system the way they are, modify or develop a new system.

After defining the objectives of the organization, either by interviews, questionnaires, observations and records inspections which includes amongst others asking for and the receipt of staff returns “nominal rolls”, checking if it conforms with the excel format as required and uploading it into the program.

The next step is to determine the number of staff from each geo political zone, state and local government in the particular organization, we can also determine retirement of each staff by age (60years) or by years of service (35years).

By virtue of the existing system on ground, we discover that the job is done manually, that is, nominal rolls are received in any format the staff in PRS extracts this copies manually by tallying state by state on tally sheets.

This method is slow, cumbersome, prone to error and requires a good number of personnel due to large volume of data involved.

This causes delays in the preparation of annual reports submitted to the presidency.

### **3.3 System Design**

based on the user requirement and the detailed analysis on the new system.

The design phase creates a new automated system which uses database management system to create, store, modify, and delete records.

It is an information system which aims at inputting the bio data of individual staff relating to:

- 1) date of birth
- 2) appointment date
- 3) retirement status
- 4) state of origin

this data base is stored in the server (windows server 2003) and it is being accessed by authenticated users (windows XP).

The local area network (LAN) is the network design used.

### **3.4 Programming Language.**

The programming language is a natural system for communication between the computers and its users in order for them to carry out specific tasks in sequential order.

### **3.5 Choice of Programming Language.**

#### **THE VISUAL BASIC 6.0**

Visual basic provides a set of tools that makes it easy to develop powerful and fast windows applications this programming language is a lot easier to learn and use other

than some other languages especially if one does not have prior programming skills and experience.

Visual basic is one component of the Microsoft visual studio development platform, each of the tools in the visual studio uses basically the same type of environment, learning visual basic makes it easier to learn the other tools such as visual c<sup>++</sup>, visual j<sup>++</sup>, and visual fox pro etc. (Scott Warner)

### **3.6 Input Design**

A database management system will be used to organize and analyze data for the extraction of result as desired.

## **CHAPTER FOUR**

### **4.0 SOFTWARE AND HARDWARE IMPLEMENTATION**

#### **4.1 Hardware requirements**

To meet our desired objective, that is the automation of the federal character commission, the following requirement is needed;

1. Pentium iv processor
2. 2G and 512 megabyte of RAM
3. Computer systems with CD ROM
4. Printers
5. Power stabilizers
6. Uninterrupted power supply (UPS)
7. Hubs, routers and network cables

#### **4.2 software Requirements**

1. Windows operating system for standalone computers
2. windows network server (server 2003), windows XP
3. program and source code.

#### **4.3 Change over procedure**

File conversion is a vital activity which is sometimes underestimated. It is the process of

converting the old file data into the form required by the new system.

Change over from the old to the new system may take place when the new system has been tested, and there is general satisfaction with the result of the test.

#### **4.4 Network model:**

A client – server network model meets the requirement since the data will be stored in a centralized area (MS Access), which will be shared within the organization network. The authentication of the users will also be centralized. The network administrator should also be able to provide logon mechanism for its users from a centralized location.

The installation of Active directory which is a repository directory for the control of its network should also be introduced. This enables the administrator to assign privileges to its users in order to monitor access to its resources and know when a user is trying to access sensitive data and application.

In choosing a network cabling, consideration should be giving to speed, reliability and cost for instance the category 5 unshielded pair cable with 100 Mbps of transmission meets the standard compared to fibre optic.

The IP addressing scheme should also be put into consideration, depending on the number of subnets required.

#### **4.5 Backup and Restoration:**

In the face of unforeseen eventualities such as data corruption and system crash an appropriate backup plan should be initiated by the administrator, probably weekly or monthly and stored in either a hard drive or a cd rom.

In the case of system crash or corrupt files it could be easily reloaded into a fresh or

rectified system.

#### **4.6 Security measures**

1. Firewall are installed to give protection to the servers, work stations, like the name implies it protects the systems from malicious harm.
2. installation of antivirus to protect the systems the antivirus should be updated regularly.

#### **4.7 Cost and benefit analysis**

The changes and absence of one has its price tag, the questions asked is always be 'how economical is the cost of the new system as compared to the old one, what are the gains of the new system?'

The old system is slow, cumbersome, time consuming, prone to errors and require a good number of personnel due to large volume of data to be inputted. Manual operation of the data involved causes delays in preparation of annual reports.

The benefits of the data management system cannot be overemphasized.

They include data redundancy, improved data integrity, increased security and ease of data maintenance. Other advantages include easier modification and updating, independence of data and program, better access to data and information.



The following templates/dialog boxes and tables show how the screen should look like;

#### 4.8 Program Output:

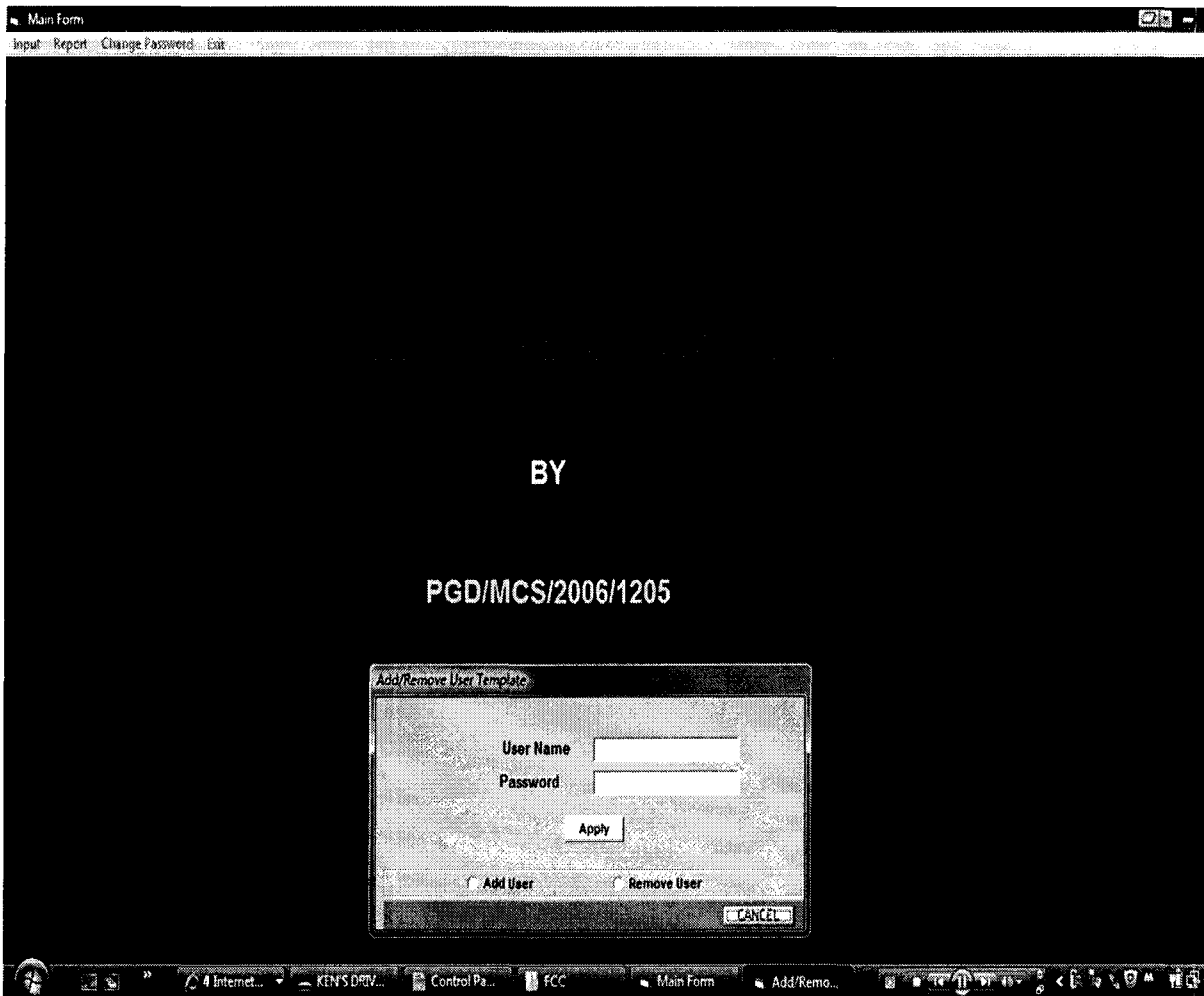
Figure 1:

OPENNING SCREEN



Opening screen.

Figure 2;  
LOGON TEMPLATE



Login screen.

Figure 3;

### EMPLOYEE INPUT TEMPLATE

Form1

ESTABLISHMENT

CODE : 000

DESCRIPTION : FEDERAL POLICE COMMISSION

EMPLOYEE DETAILS

EMPLOYEE NO. :

NAME :

GRADE :

DESIGNATION :

STATE OF ORIGIN : Niger

LGA : Select LGA

DATE OF BIRTH :

AGE :

DATE OF FIRST APPT. :

RETIRESMENT STATUS :

DATE OF PRESENT APPT. :

SEX : MALE

MARITAL STATUS : SINGLE

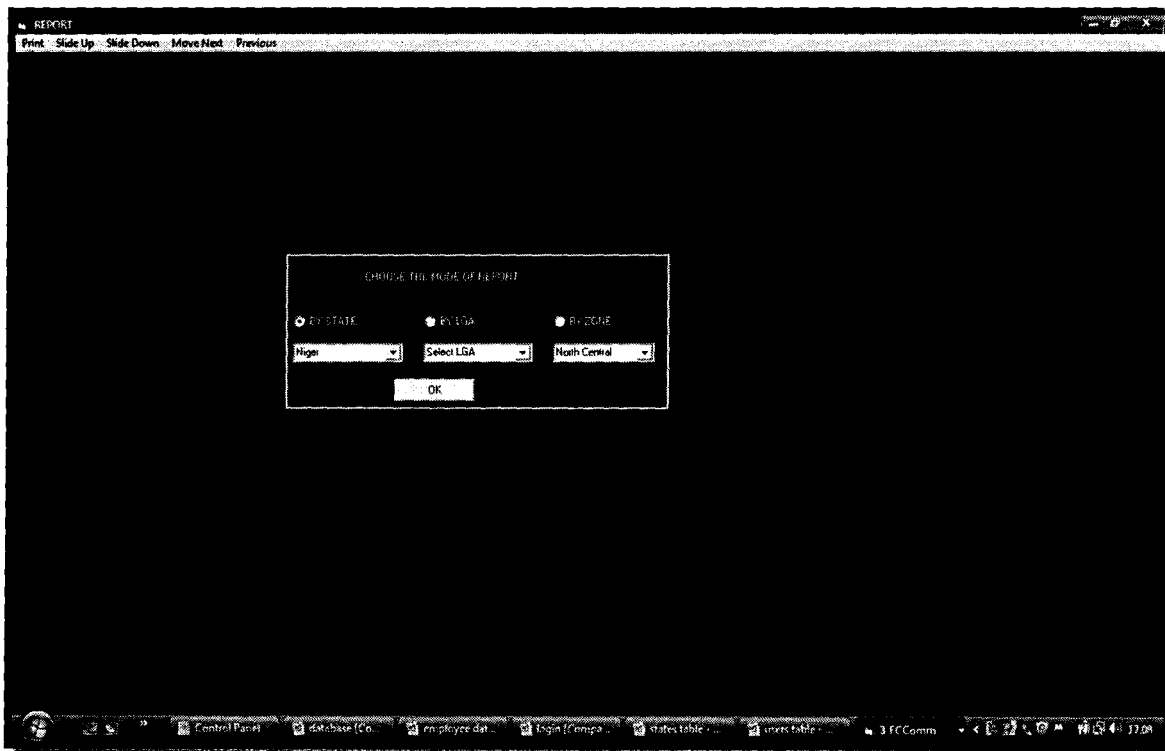
SAVE FIND UPDATE STOP EXIT

Internet KEN'S DRIV... Control Pa... FCC Main Form Form1 14:52

Employee records input.

Figure 4;

## REPORT



Reports screen.

Figure 5;

## DATABASE

The screenshot shows a Microsoft Access database window titled "FCC Data: Database (Access 2002 - 2003 file format) - Microsoft Access non-commercial use". The main window displays a table with the following data:

Register	EmployNo	Name1	Grade1	Designation	StateOfOrin	DateBirth	DateFAPPT	DatePAPPT	Sex1	MStatus	Zone1
Register: Table	1200	kennedy eze	10	sao	Abia	18/02/1973	06/06/2000	01/01/2007	MALE	MARRIED	South East
StateTable: Table	1201	eze chukwu o	13	asst. cao	Anambra	18/02/1967	06/06/1980	01/01/1999	FEMALE	MARRIED	South East
StateTable: Table	1204	john matt	16	assist director	Niger	23/10/1956	19/12/1980	15/07/2005	MALE	SINGLE	North Central
userTable: Table	1205	Fati abu	09	sao	Adamawa	12/12/1943	12/12/1980	12/12/1999	FEMALE	MARRIED	North East
userTable: Table	1206	london pett	06	ao 1	bayelsa	23/12/1960	12/12/1990	12/12/2007	MALE	SINGLE	south south
	1207	Adamu muazu	14	spo	Niger	20/12/2000	12/12/2000	12/12/2003	FEMALE	MARRIED	North Central
	1208	ken etu	08	acao	abia	23/12/1940	12/12/2000	12/12/2007	MALE	SINGLE	SCOUTH EAST
	1209	Gana munda	07	ao 3	Sokoto	10/07/1987	12/12/2000	12/12/2004	MALE	SINGLE	North West
	1210	Isith abdul	05	ao 1	kwara	11/10/1990	12/12/2006	22/12/2004	MALE	SINGLE	north central
	1213	guru usman	15	deputy directc	Kano	04/08/1965	5/7/1998	4/6/2005	MALE	MARRIED	North West
	1214	charity eze	09	ro 1	imo	24/08/1975	02/05/2000	01/01/2004	FEMALE	MARRIED	South East
	1215	charity anyane	09	ro 1	imo	24/08/1948	02/05/1972	01/01/1999	FEMALE	MARRIED	South East
	1216	emmanuel eke	12	pro	Anambra	24/09/1968	02/05/1982	01/01/1999	MALE	MARRIED	South East

Microsoft Access Database

Figure 6;

LIST OF STATES IN THE FEDERATION

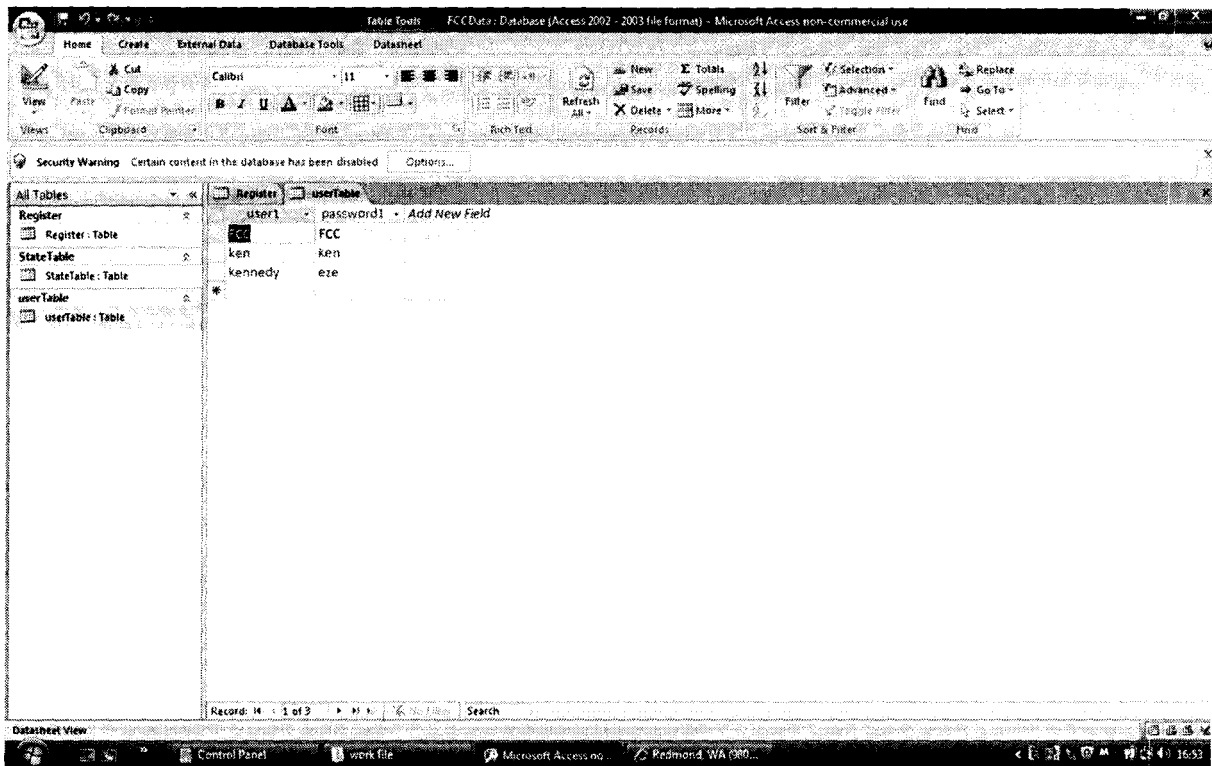
The screenshot shows a Microsoft Access window titled "Table Tools FCCData: Database (Access 2002 - 2003 file format) - Microsoft Access non-commercial use". The window displays a table named "StateTable" with two columns: "StateName" and "StateZone". The table contains 37 records, representing the states and Federal Capital Territory of Nigeria. The status bar at the bottom indicates "Records: 14 1 of 37".

StateName	StateZone
Abuja	South East
Abuja-FCT	North Central
Adamawa	North East
Akwa-ibom	South South
Anambra	South East
Bauchi	North East
Bayelsa	South South
Benue	North Central
Borno	North East
Cross River	South South
Delta	South South
Ebonyi	South East
Edo	South South
Ekiti	South West
Enugu	South East
Gombe	North East
Imo	South East
Jigawa	North West
Kaduna	North West
Kano	North West
Katsina	North West
Kebbi	North West
Kogi	North Central
Kwara	North Central
Lagos	South West

States table.

Figure 7;

## LIST OF AUTHENTICATED USERS



List of Users table

## ***CHAPTER FIVE***

### ***5.0 SUMMARY, CONCLUSION AND RECOMMENDATIONS***

#### **5.1 Summaries**

The objective of setting up a dedicated data base management system (DCMS) is to design a data base specifically for capturing and analyzing incoming data in form of nominal roll. The system has been investigated and designed to use this software for its analysis.

Discrepancies in the manual tally of nominal rolls and the anomalies involved in fraudulently updating the employee records results in so many problems.

The manual system is slow, cumbersome, time, prone to errors and requires a good number of personnel due to large volume of data involved. Manual operation of the statistics unit of the commission delays the submission of annual report to the presidency.

The automation of the commission's database system would help to simplify daily routine.

The features will enable the user to create and store information into the database, modify and update records in the database and access the database to find information.

The new system is an integrated information system which is based on the presumption that data and information is being shared by authenticated users and the data stored in the server so as to enhance security.

The visual basic 6.0 programming language is used because of its high performance and advanced features.



## **5.2 Conclusions**

After a successful compares of the old and new system, it is clearly observed that the new system which uses the database management system is faster and more efficient in collating records. It is also easier to use and less labor intensive.

The benefit of the database management system includes amongst others:

Reduced data redundancy (repetition of data fields), improved data efficiency and integrity (data accuracy, consistent and up to date), increased security and ease of maintenance etc

This database management system offers standard procedures for editing, adding, and deleting records being entered into the system.

An appropriate backup plan will be integrated to ensure availability of information in case of primary system failure.

## **5.3 Recommendations**

The development of the new system requires a long term plan, commitment from management at all levels, highly technical personnel, availability of sufficient funds, and good technology.

There is need to test the software and hardware and also transfer all necessary files into

the new system, appropriate training must be giving to users, the is also need to evaluate and audit entries made by users and afterwards this entries if proved stored and backed up.

Emphasis must be placed on training of staff because a poorly trained staff in such key

position as data entry could cause a lot of danger to the database.

Security of database should be paramount to this organization because the data it deals with is a sensitive since it has to do with the entire civil service, its work force, allocation of amenities, equity distribution of political appointee and most of all record of individual staff of the ministries, extra ministerial department and agencies.

Maintenance of the system is another key area that needs urgent and prompt attention, these improves the system by periodic evaluations making changes based on the new developments in technology.

## References:

1. Federal character commission (enabling act number 34 of 1996)
2. Federal Character Commission Hand book (fourth edition,2007)
3. Federal republic of Nigeria 1979 constitution section 14 (3)
4. Federal Republic of Nigeria 1999 constitution section 14(153)
5. William B K (1938) Using Info Tech:

A practical introduction to computers and communication.

Brian K and Starcey V (2006), 6<sup>th</sup> edition, Technology Education

5. Wikipeddia, the free encyclopedia: data base management system
6. Windows server 2003 (networking and administration)
7. Senn J A (1989) analysis and design of information system  
MacGraw GHill publication Singapore

## APPENDIX:

The following are the codes for the program:

```
Private Sub Command1_Click()
    If Trim(txtUserName.Text) = "" Or Trim(txtPassword.Text) = "" Then

        MsgBox "Invalid Input, Operation Terminated!", vbCritical + vbOKOnly, "Error!"
        Exit Sub

    End If
    '
    '
    With Adodc1

        .RecordSource = "SELECT * FROM userTable WHERE user1 ='" +
txtUserName.Text + "' AND password1 = '" + txtPassword.Text + "'"
        .Refresh

    End With
    '
    If Adodc1.Recordset.RecordCount < 1 Then
        'disable all kind...
        'NO_OF_TRIER = NO_OF_TRIER + 1
        MsgBox "Invalid User/Password Name", vbOKCancel + vbInformation, "Invalid
User"
        Exit Sub

    Else

        'enable all
        MsgBox "You're signed In", vbInformation + vbOKOnly, "Congratulation!"

        txtUserName.Text = ""
        txtPassword.Text = ""
        '
        enableAllThem

    End If
End Sub
```

```
Picture2.Visible = False
```

```
End If
```

```
End Sub
```

```
Sub enableAllThem()
```

```
    mnuInput.Enabled = True  
    mnuReport.Enabled = True  
    mnuPass.Enabled = True
```

```
End Sub
```

```
Private Sub Command2_Click()
```

```
    End
```

```
End Sub
```

```
Private Sub Form_Load()
```

```
    With Adodc1
```

```
        .ConnectionString = "Provider=Microsoft.Jet.OLEDB.4.0;Data  
Source=C:\FCC\FCCData.mdb;Persist Security Info=false"  
        .RecordSource = "SELECT * FROM userTable"  
        .Refresh
```

```
    End With
```

```
    'txtUserName.SetFocus
```

```
End Sub
```

```
Private Sub mnuPass_Click()
```

```
    Load frmAdd_RemoveUser  
    frmAdd_RemoveUser.Show
```

```
End Sub
```

```
Private Sub txtPassword_KeyPress(KeyAscii As Integer)
```

```
    If KeyAscii = 13 Then
```

```
        Command1_Click
```

```
    End If
```

```
End Sub
```

```
Private Sub txtUserName_KeyPress(KeyAscii As Integer)
```

```
    If KeyAscii = 13 Then
```

```
        txtPassword.SetFocus
```

```
    End If
```

```
End Sub
```

```
Private Sub mnInput_Click()
```

```
    Load frmRegister
```

```
    frmRegister.Show
```

```
End Sub
```

```
Private Sub mnuReport_Click()
```

```
    Load frmReport
```

```
    frmReport.Show
```

```
End Sub
```

```
Private Sub mnuexit_Click()
```

```
    End
```

```
End Sub
```

```
Private Sub cmdfind_Click()
```

```
    EmployeeNo = txtNumber.Text
```

```
    With Adodc1
```

```
        .ConnectionString = "Provider=Microsoft.Jet.OLEDB.4.0;Data  
Source=C:\FCC\FCCData.mdb;Persist Security Info=false"
```

```
        .RecordSource = "SELECT * FROM Register WHERE EmployNo='" +  
EmployeeNo + "'"
```

```
        .Refresh
```

```
    End With
```

```
    With Adodc1.Recordset
```

```
        DateA = Date
```

```
        DateB = Format(!DateBirth, "DD/MM/YYYY")
```

```
        DateC = Format(!DateFAPPT, "DD/MM/YYYY")
```

```
        DateD = DateA - DateB
```

```
        DateE = DateA - DateC
```

```
        If DateE > 12600 Then
```

```
            txtRetire = "Due for Retirement"
```

```
        ElseIf DateD > 21600 Then
```

```
ElseIf txtStateOfOr.Text = "Ondo" Then
    txtLGA.AddItem ("Akoko NW")
    txtLGA.AddItem ("Akoko NE")
    txtLGA.AddItem ("Akoko SE")
    txtLGA.AddItem ("Akoko SW")
    txtLGA.AddItem ("Ose")
    txtLGA.AddItem ("Owo")
    txtLGA.AddItem ("Akure North")
    txtLGA.AddItem ("Akure South")
    txtLGA.AddItem ("Ifedore")
    txtLGA.AddItem ("Aki Ile Oluji/Okeigbo")
    txtLGA.AddItem ("Ondo West")
    txtLGA.AddItem ("Ondo East")
    txtLGA.AddItem ("Idanre")
    txtLGA.AddItem ("Odigbo")
    txtLGA.AddItem ("Okitipupa")
    txtLGA.AddItem ("Irele")
    txtLGA.AddItem ("Ese Odo")
    txtLGA.AddItem ("Ilaje")
```

```
ElseIf txtStateOfOr.Text = "Osun" Then
    txtLGA.AddItem ("Ifedayo")
    txtLGA.AddItem ("Ila")
    txtLGA.AddItem ("Boluwaduro")
    txtLGA.AddItem ("Odo Otin")
    txtLGA.AddItem ("Ifelodun")
    txtLGA.AddItem ("Olorunda")
    txtLGA.AddItem ("Irepodun")
    txtLGA.AddItem ("Orolu")
    txtLGA.AddItem ("Egbedore")
    txtLGA.AddItem ("Osogbo")
    txtLGA.AddItem ("Boripe")
    txtLGA.AddItem ("Obokun")
    txtLGA.AddItem ("Oriade")
    txtLGA.AddItem ("Ilesha East")
    txtLGA.AddItem ("Atakunmosa West")
    txtLGA.AddItem ("Ilesha West")
    txtLGA.AddItem ("Ede North")
    txtLGA.AddItem ("Ede South")
    txtLGA.AddItem ("Ejigbo")
    txtLGA.AddItem ("Ola Oluwa")
    txtLGA.AddItem ("Iwo")
    txtLGA.AddItem ("Ayedire")
    txtLGA.AddItem ("Irewole")
    txtLGA.AddItem ("Isokan")
    txtLGA.AddItem ("Ayedare")
    txtLGA.AddItem ("Ife North")
```

```

txtLGA.AddItem ("Ife Central")
txtLGA.AddItem ("Ife East")
txtLGA.AddItem ("Atakunmosa East")
txtLGA.AddItem ("Ife South")
ElseIf txtStateOfOr.Text = "Oyo" Then
txtLGA.AddItem ("Irepo")
txtLGA.AddItem ("Olorunsogo")
txtLGA.AddItem ("Oorelepe")
txtLGA.AddItem ("Saki East")
txtLGA.AddItem ("Saki West")
txtLGA.AddItem ("Atibo")
txtLGA.AddItem ("Itesiwaju")
txtLGA.AddItem ("Atigba")
txtLGA.AddItem ("Oriire")
txtLGA.AddItem ("Ogbomosho North")
txtLGA.AddItem ("Surulere")
txtLGA.AddItem ("Ogbomosho South")
txtLGA.AddItem ("Ogo-Oluwa")
txtLGA.AddItem ("Oyo East")
txtLGA.AddItem ("Oyo West")
txtLGA.AddItem ("Iseyin")
txtLGA.AddItem ("Kajola")
txtLGA.AddItem ("Iwajowa")
txtLGA.AddItem ("Ibarapa North")
txtLGA.AddItem ("Ibarapa Central")
txtLGA.AddItem ("Ibarapa East")
txtLGA.AddItem ("Ido")
txtLGA.AddItem ("Afijio")
txtLGA.AddItem ("Akinyele")
txtLGA.AddItem ("Lagelu")
txtLGA.AddItem ("Ibadan North")
txtLGA.AddItem ("Ibadan North West")
txtLGA.AddItem ("Ibadan South West")
txtLGA.AddItem ("Ibadan South East")
txtLGA.AddItem ("Ibadan North East")
txtLGA.AddItem ("Egbeda")
txtLGA.AddItem ("Ona-Ara")
txtLGA.AddItem ("Oluyole")
ElseIf txtStateOfOr.Text = "Plateau" Then
txtLGA.AddItem ("Bassa")
txtLGA.AddItem ("Jos North")
txtLGA.AddItem ("Jos East")
txtLGA.AddItem ("Jos South")
txtLGA.AddItem ("Riyom")
txtLGA.AddItem ("Barkinladi")
txtLGA.AddItem ("Mangu")

```



```

txtLGA.AddItem ("Bokkos")
txtLGA.AddItem ("Quaun-Pan")
txtLGA.AddItem ("Pankshin")
txtLGA.AddItem ("Kanke")
txtLGA.AddItem ("Kanam")
txtLGA.AddItem ("Wase")
txtLGA.AddItem ("Lantang North")
txtLGA.AddItem ("Mikang")
txtLGA.AddItem ("Shedam")
txtLGA.AddItem ("Lantang South")
Elseif txtStateOfOr.Text = "Rivers" Then
txtLGA.AddItem ("Ogba/Egbema/Ndoni")
txtLGA.AddItem ("Ahoada East")
txtLGA.AddItem ("Ahoada West")
txtLGA.AddItem ("Abua/Odua")
txtLGA.AddItem ("Akuku-Toru")
txtLGA.AddItem ("Degema")
txtLGA.AddItem ("Asari-Toru")
txtLGA.AddItem ("Emuoha")
txtLGA.AddItem ("Ikwerre")
txtLGA.AddItem ("Etche")
txtLGA.AddItem ("Omuma")
txtLGA.AddItem ("Obio/Akpor")
txtLGA.AddItem ("Portharcourt")
txtLGA.AddItem ("Okrika")
txtLGA.AddItem ("Eleme")
txtLGA.AddItem ("Oyigbo")
txtLGA.AddItem ("Khana")
txtLGA.AddItem ("Gokhana")
txtLGA.AddItem ("Tai")
txtLGA.AddItem ("Ogu/Bolo")
txtLGA.AddItem ("Bonny")
txtLGA.AddItem ("Andoni")
txtLGA.AddItem ("Opobo/Nkoro")
Elseif txtStateOfOr.Text = "Sokoto" Then
txtLGA.AddItem ("Gudu")
txtLGA.AddItem ("Binji")
txtLGA.AddItem ("Tangaza")
txtLGA.AddItem ("Gwadabawa")
txtLGA.AddItem ("Illela")
txtLGA.AddItem ("Gada")
txtLGA.AddItem ("Sabon Birni")
txtLGA.AddItem ("Isa")
txtLGA.AddItem ("Goronyo")
txtLGA.AddItem ("Wurno")
txtLGA.AddItem ("Rabah")

```

```
txtLGA.AddItem ("Kware")
txtLGA.AddItem ("Sokoto South")
txtLGA.AddItem ("Sokoto North")
txtLGA.AddItem ("Wamakko")
txtLGA.AddItem ("Silame")
txtLGA.AddItem ("Yabo")
txtLGA.AddItem ("Bodinga")
txtLGA.AddItem ("Dange Shuni")
txtLGA.AddItem ("Tureta")
txtLGA.AddItem ("Shagari")
txtLGA.AddItem ("Tambuwal")
txtLGA.AddItem ("Kebbe")
ElseIf txtStateOfOr.Text = "Taraba" Then
txtLGA.AddItem ("Karim-Lamido")
txtLGA.AddItem ("Lau")
txtLGA.AddItem ("Ardo-Kola")
txtLGA.AddItem ("Jalingo")
txtLGA.AddItem ("Yorro")
txtLGA.AddItem ("Zing")
txtLGA.AddItem ("Gassol")
txtLGA.AddItem ("Ibi")
txtLGA.AddItem ("Wukari")
txtLGA.AddItem ("Bali")
txtLGA.AddItem ("Gashak")
txtLGA.AddItem ("Sardauna")
txtLGA.AddItem ("Kurmi")
txtLGA.AddItem ("Ussa")
txtLGA.AddItem ("Takum")
txtLGA.AddItem ("Donga")
ElseIf txtStateOfOr.Text = "Yobe" Then
txtLGA.AddItem ("Machina")
txtLGA.AddItem ("Nguru")
txtLGA.AddItem ("Yusufari")
txtLGA.AddItem ("Yunusari")
txtLGA.AddItem ("Geidam")
txtLGA.AddItem ("Bursari")
txtLGA.AddItem ("Karasuwa")
txtLGA.AddItem ("Barde")
txtLGA.AddItem ("Jakusko")
txtLGA.AddItem ("Fune")
txtLGA.AddItem ("Tarmuwa")
txtLGA.AddItem ("Damaturu")
txtLGA.AddItem ("Gujba")
txtLGA.AddItem ("Gulani")
txtLGA.AddItem ("Fika")
txtLGA.AddItem ("Potiskum")
```

```

txtLGA.AddItem ("Nangere")
ElseIf txtStateOfOr.Text = "Zamfara" Then
txtLGA.AddItem ("Gummi")
txtLGA.AddItem ("Bukkuyum")
txtLGA.AddItem ("Anka")
txtLGA.AddItem ("Bakura")
txtLGA.AddItem ("Talata Mafara")
txtLGA.AddItem ("Maradun")
txtLGA.AddItem ("Shinkafi")
txtLGA.AddItem ("Zurmi")
txtLGA.AddItem ("Birnin Magaji")
txtLGA.AddItem ("Kaura Namoda")
txtLGA.AddItem ("Tsafe")
txtLGA.AddItem ("Gusau")
txtLGA.AddItem ("Bungudu")
txtLGA.AddItem ("Maru")
ElseIf txtStateOfOr.Text = "Abuja-FCT" Then
txtLGA.AddItem ("Bwari")
txtLGA.AddItem ("Abuja Municipal")
txtLGA.AddItem ("Gwagwalada")
txtLGA.AddItem ("Abaji")
txtLGA.AddItem ("Kwali")
txtLGA.AddItem ("Kuje")

```

End If

End Sub

```

Private Declare Function SendMessage Lib "user32.dll" Alias "SendMessageA" (ByVal
hwnd As Long, ByVal wParam As Long, ByVal lParam As Long, ByVal IPParam As
Long) As Long

```

```

Private Const WM_PAINT = &HF

```

```

Private Const WM_PRINT = &H317

```

```

Private Const PRF_CLIENT = &H4& ' Draw the window's client area

```

```

Private Const PRF_CHILDREN = &H10& ' Draw all visible child

```

```

Private Const PRF_OWNED = &H20& ' Draw all owned windows

```

```

Private Sub cmdOk_Click()

```

```

Dim StateSelect As String, ZoneSelect As String, LGASelect As String

```

```

Picture1.Visible = True

```

```

Frame1.Visible = False

```

```

StateSelect = txtStateOfOr.Text

```

```

ZoneSelect = cmbZone.Text

```

```

LGASelect = txtLGA.Text

```

```

lbldate.Caption = Format(Date, "DD/MM/YYYY")
i = 0
k = 0
If optState.Value = True Then
    Label2.Caption = "LIST OF STAFF ACCORDING TO THE STATE"
    With Adodc1

        .ConnectionString = "Provider=Microsoft.Jet.OLEDB.4.0;Data
Source=C:\FCC\FCCData.mdb;Persist Security Info=false"
        .RecordSource = "SELECT * FROM Register WHERE StateOfOrin=" +
StateSelect + """"
        .Refresh

    End With
ElseIf optZone.Value = True Then
    Label2.Caption = "LIST OF STAFF ACCORDING TO THE ZONE"
    With Adodc1

        .ConnectionString = "Provider=Microsoft.Jet.OLEDB.4.0;Data
Source=C:\FCC\FCCData.mdb;Persist Security Info=false"
        .RecordSource = "SELECT * FROM Register WHERE Zone1=" + ZoneSelect +
""""
        .Refresh

    End With
ElseIf OptLGA.Value = True Then
    Label2.Caption = "LIST OF STAFF ACCORDING TO THE LGA"
    Label16.Caption = "LGA"
    With Adodc1

        .ConnectionString = "Provider=Microsoft.Jet.OLEDB.4.0;Data
Source=C:\FCC\FCCData.mdb;Persist Security Info=false"
        .RecordSource = "SELECT * FROM Register WHERE LGA=" + LGASelect +
""""
        .Refresh

    End Wit
End If
With Adodc1.Recordset
Do While .EOF = False
    i = i + 1
    FileNo(i) = !EmployNo
    Name2(i) = !Name1
    Zone2(i) = !Zone1
    State2(i) = !StateOfOrin
    Grade2(i) = !Grade1

```

```

    If OptLGA.Value = True Then
        State2(i) = !LGA
    Else
        State2(i) = !StateOfOrin
    End If
    .MoveNext
Loop
End With
khit = 0
khit = khit + 1

If khit = 1 Then

    IniCount = FinCount + 1

Else
    IniCount = FinCount
End If

'PageNo = 1

IniCount = 1
If i < 50 Then
    FinCount = i
    mnuNext.Enabled = False
    mnuBack.Enabled = False
Else
    FinCount = 50
End If
For k = IniCount To FinCount
    lblSno.Caption = lblSno.Caption & k & vbCrLf
    lblFno.Caption = lblFno.Caption & FileNo(k) & vbCrLf
    lblname.Caption = lblname.Caption & Name2(k) & vbCrLf
    lblZone.Caption = lblZone.Caption & Zone2(k) & vbCrLf
    lblState.Caption = lblState.Caption & State2(k) & vbCrLf
    lblGrade.Caption = lblGrade.Caption & Grade2(k) & vbCrLf

Next k

End Sub

Private Sub mnuBack_Click()
    IniCount = IniCount - 50
    FinCount = FinCount - 50

    lblSno.Caption = ""

```

```
lblFno.Caption = ""  
lblname.Caption = ""  
lblZone.Caption = ""  
lblState.Caption = ""  
lblGrade.Caption = ""
```

```
For k = IniCount To FinCount
```

```
    lblSno.Caption = lblSno.Caption & k & vbCrLf  
    lblFno.Caption = lblFno.Caption & FileNo(k) & vbCrLf  
    lblname.Caption = lblname.Caption & Name2(k) & vbCrLf  
    lblZone.Caption = lblZone.Caption & Zone2(k) & vbCrLf  
    lblState.Caption = lblState.Caption & State2(k) & vbCrLf  
    lblGrade.Caption = lblGrade.Caption & Grade2(k) & vbCrLf
```

```
Next k
```

```
End Sub
```

```
Private Sub mnuNext_Click()
```

```
    IniCount = FinCount + 1  
    FinCount = FinCount + 50
```

```
    lblSno.Caption = ""  
    lblFno.Caption = ""  
    lblname.Caption = ""  
    lblZone.Caption = ""  
    lblState.Caption = ""  
    lblGrade.Caption = ""
```

```
For k = IniCount To FinCount
```

```
    lblSno.Caption = lblSno.Caption & k & vbCrLf  
    lblFno.Caption = lblFno.Caption & FileNo(k) & vbCrLf  
    lblname.Caption = lblname.Caption & Name2(k) & vbCrLf  
    lblZone.Caption = lblZone.Caption & Zone2(k) & vbCrLf  
    lblState.Caption = lblState.Caption & State2(k) & vbCrLf  
    lblGrade.Caption = lblGrade.Caption & Grade2(k) & vbCrLf
```

```
Next k
```

```
End Sub
```

```
Public Sub PrintPictureBox(Box As PictureBox, Optional X As Single = 0, Optional Y  
As Single = 0)
```

```
    Dim rv As Long  
    Dim ar As Boolean
```

On Error GoTo Exit\_Sub

With Box

'Save ReDraw value  
ar = .AutoRedraw

'Set persistence  
.AutoRedraw = True

'Wake up printer  
Printer.Print

'Draw controls to picture box

rv = SendMessage(.hwnd, WM\_PAINT, .hDC, 0)  
rv = SendMessage(.hwnd, WM\_PRINT, .hDC, \_  
PRF\_CHILDREN Or PRF\_CLIENT Or PRF\_OWNED)

'Refresh image to picture property  
.Picture = .Image

'Copy picture to Printer  
Printer.PaintPicture .Picture, X, Y  
Printer.EndDoc

'Restore bgcolor (Re-load picture if picture was used)  
Box.Line (0, 0)-(.ScaleWidth, .ScaleHeight), .BackColor, BF

'Restore ReDraw  
.AutoRedraw = ar  
End With

Exit\_Sub:

If Err.Number Then MsgBox Err.Description, vbOKOnly, "Printer Error!"

End Sub

Private Sub mnuPrint\_Click()

Printer.Orientation = vbPRORPortrait  
PrintPictureBox Picture1, 100, 100

End Sub