

FUDMA

Journal
OF
AGRICULTURE
And AGRICULTURAL
Technology



Volume 4 No. 2 December 2018

EDITORIAL BOARD MEMBERS

S/N	NAMES	OFFICE
1.	PROF. L.A SAULAWA	EDITOR-IN-CHIEF/CHAIMAN
2.	PROF. H.Y. IBRAHIM	MANAGING EDITOR
3.	DR. A.G. ADESOJI	BUSINESS MANAGER
4.	DR (MRS) MARYAM ATI	ASST. BUSINESS MANAGER
5.	MR. S.S ADEOLA	ASST. BUSINESS MANAGER/SECRETARY

ALL ENQUIRIES SHOULD BE ADRESSED TO:

EDITOR-IN-CHIEF,

FUDMA JOURNAL OF AGRICULTURE AND AGRICULTURAL TECHNOLOGY,

FACULTY OF AGRICULTURE AND AGRICULTURAL TECHNOLOGY,

FEDERAL UNIVERSITY DUTSIN-MA.

P.M.B 5001, DUTSIN-MA

KATSINA STATE, NIGERIA.

E-MAIL: jaat@fudutsinma.edu.ng

GUIDELINES TO AUTHORS

Manuscripts should mainly include the following sections: **Title page, abstract (250 words max), main body (introduction, theoretical framework, method, results and discussion, conclusion recommendations), and references.**

General steps:

1. The manuscript should be 8 to 10 pages excluding **title page, abstract, references and annex.**
2. The preferred font of the Journal is Times New Roman. The font size is 12 with single space.
3. APA (American Psychological Association) is used as the method in sources citation process. Details about APA format can be found here: <http://www.apastyle.org/>
4. All documents should be submitted as MS Word (compatibility mode) 'doc' file.
5. All submission should be submitted to jaat@fudutsinma.edu.ng

1. Title

The title should be concise and describe the contents of the paper. It should be typed in 'upper-case' letters. The 'title page' should include the authors' full names (surname first, followed by initial(s)), e.g. Abu, S. and Adekola, J.A. with their respective affiliations. The name of the corresponding author should be identified by the use of *asterisk* with phone number and a functional e-mail address.

2. Abstract

The Abstract should be informative, concise and self-explanatory. It should not be more than 250 words; justified with single line spacing. The abstract should capture the content of the paper including the methods used and the principal results. No literature should be cited within the abstract.

3. Key words

Following the abstract, five key words should be provided.

4. Introduction

The Introduction should clearly provide a significance of the study, problem statement, relevant literature on the subject issue, and the proposed approach of the study. It should be understandable to colleagues from a broad range of scientific disciplines.

5. Materials and methods

This section should be complete and clear enough to allow experiments to be replicated. However, truly novel procedures should be described in detail; previously published procedures should be cited, and important modifications of these procedures should be described. Trade names should be capitalized. Sub-headings should be used where appropriate.

6. Results and discussion

This section should contain results and discussion. However, authors are at liberty to present the two separately. Results should be presented with clarity and precision using figures, tables, charts, etc., where necessary. In case where the results are separated from the discussion, the results should be presented without making reference to the literature. The discussion should interpret the findings of the research and where necessary, should include a critical comparison with previously reported findings.

Result Presentation formats

a. Tables

Tables should be self-explanatory and positioned appropriately within the text. Vertical lines should be avoided. A short descriptive title (in sentence case) should be provided at the top of every table. All tables should be numbered using Arabic numerals. The same data should not be presented in tabular and graphical form, or repeated in the text.

b. Figures

Figures should be prepared using applications capable of generating high resolution graphics such as GIF, TIFF, JPEG or PowerPoint before pasting on the prepared manuscripts. Titles should be in *sentence case*, and placed below the figures. The figures should be numbered serially using Arabic numerals.

6. Conclusion and recommendations

This section should contain the answers to the research questions (or specific objectives met) and concise conclusion(s) for the study drawn. Recommendations for future research direction with respect to the present could be preferred in this section.

7. Acknowledgements

Acknowledgments (if any) should be brief.

8. References

The American Psychology Association (APA) system of referencing should be used. Citations in the text should be by author's surname and year of publication and separated with a comma, if the citation is not part of the narration: e.g. (Hamzat, 2010), (Tukur and Ogbodo, 2012), (Ayatse et al., 2014). If the citation is part of the narration, provide the author's name and the year of publication in bracket, e.g. Aruwayo (2012) and Adeola and Hamzat (2014). Where there are more than two authors, only the first author's name should be mentioned, followed by '*et al.*' e.g. Jari *et al.*, (2013). In the event that a cited author has two or more works published in the same year, the reference (both in the text and in the reference list) should be identified by lower case letters ('a' or 'b') after the date to distinguish the works, e.g. (Bichi, 2015a, b).

References should be listed at the end of the paper in alphabetical order. Unpublished information cited in the text should not be included in the reference list, but should only be mentioned in the text, e.g. (Ibrahim, H.Y., Department of Agricultural Economics and Extension, Federal University Dutsin-Ma, Katsina State, Nigeria, personal communication, March 30, 2011).

a. Journal

Journal articles should be referenced as follows:

Fadimu, O.Y., Idowu, O.T.H. and Ipinlaye, S.J. (2014). Studies on the dormancy and germination of stony fruits of Hog plum (*Spondias mombin*) in response to different pre-soaking treatments. *International Research Journal of Biological Sciences*, 3(6), 57-62.

b. Textbooks

Textbooks should be documented as exemplified below.

Eleanya, K. (2012). *Data analysis using SPSS for farm managers*, Ibadan, Nigeria: McMillian Publishers.

c. Edited books (No Author)

Tukur, H. M., and Olatinwo, L. (Eds.). (2013). *Poor man cow: sheep and goat*. Dutsin-Ma, Nigeria: FUDMA Press Publishers.

d. Edited book (with an Author)

Jamala, G. (2010). *Dictionary of Silviculture* (Ed.). Yola, Nigeria: Spectrums Inc.

e. Chapter in a book

Chapters in a book should be documented as exemplified below.

Ogbodo, J.A.; Egbuche, C. T. and Arodudu, O.T.; (2014). Detecting logging roads and clearcuts in Congo with TerraSAR and RADARSAT data. In: *Climate Change and Forest Ecosystems*/editors: Silvia Lac and Mark P. McHenry, Nova Science Publishers Inc. pp 71 - 88, New York, USA.

f. Conference proceedings

Conference proceedings materials should be documented as exemplified below.

Dauda, A.B., Dasuki, A. and Bichi, A.H. (2014). Analysis of constraints to aquaculture development in Katsina state, Nigeria. In: P. O. Idisi, B. Okoye, E. E. Idu, A. A. Njidda, R. A. Oluwafemi and O. C. P. Agubosi (Eds.). *Emerging issues in agricultural transformation in Nigeria. Proceedings of the 48th Annual Conference of the Agricultural Society of Nigeria (ASN)*, Abuja, Nigeria, pp 14-21.

g. Website sources

(i) Referencing a webpage that list no author

Example:

All rice farmers are to benefit from BOA loans in Katsina. (2010, October 26). Retrieved from http://www.nta.msn.gov.ng/id/93652098/ns/world_news-naija/

(ii) Referencing a webpage that list author(s)

Materials gotten from the website should be referenced as follows:

UNFCCC - United Nation Framework Convention on Climate Change. (2011). *The Marrakesh Declaration. First draft*, Available from http://fire.pppl.gov/gcc_cop7_accord_0.pdf, Last accessed 16 June, 2012.

i. Newspaper articles

(i) **Non-print source**

Adeosun J. A. (1999, June 12). The Implication of June 12 and crop production in Nigeria. *Daily Times*. Retrieved from <http://bela.blogs.dngatimes.com>

(ii) **In – print source**

Jam, D. (2012, March 20). FUDMA barns the sale of handouts to students. *Nigerian Punch*, P. 5.

Table of Content	
List of Titles and Authors	
EVALUATION OF SELECTED COWPEA (<i>Vigna unguiculata</i> L. Walp) GENOTYPES FOR RESISTANCE TO COWPEA APHID- BORNE MOSAIC VIRUS DISEASE <i>Sala, J. Y., Salaudeen, M. T. and Gana, A. S.</i>	1-8
GROWTH AND YIELD RESPONSES OF SELECTED COWPEA (<i>Vigna unguiculata</i> L. Walp) GENOTYPES TO CUCUMBER MOSAIC VIRUS DISEASE <i>Babalola, P.O., M.T. Salaudeen and A. S. Gana</i>	9-20
RESPONSE OF SESAME (<i>Sesamum indicum</i> L.) TO DIFFERENT WEED CONTROL METHODS AND FERTILIZERS IN KANO STATE, NIGERIA. <i>G. M. Adewale., M. S. Garko., A. Muhammad, M. A Yawale and I. B., Mohammed</i>	21-33
ENVIRONMENTAL DEGRADATION WITH THE ROLE OF POVERTY AMONG FARMING HOUSEHOLDS IN KANO STATE, NIGERIA. <i>Guda, J.M Ahmad, M.M and Ibrahim, U.M.</i>	34-42
EFFECT OF SMALL-SCALE IRRIGATION SCHEME ON FOOD SECURITY OF FARMING HOUSEHOLDS IN KWARA STATE, NIGERIA. <i>Jimoh O, Adebisi L.O, Osasona K.K , Alalade O.A, Olaoyel.J and Aloga-Omale R</i>	43-52
PROFITABILITY AND TECHNICAL EFFICIENCY OF CULTURED FISH FARMING IN KAINJI LAKE BASIN, NIGERIA <i>Ibeun, B. A., Ojo, O. A., Mohammed, U. S. and Adewumi, A.</i>	53-61
ECONOMICS OF PALM OIL PRODUCTION BY SMALLHOLDER OIL PALM FARMERS IN EMOHUA LOCAL GOVERNMENT AREA, RIVERS STATE, NIGERIA <i>Wilcox, G. I. and Tasié, C. M.</i>	62-67
GENETIC VARIABILITY, HERITABILITY AND GENETIC ADVANCE FOR YIELD AND ITS RELATED TRAITS IN WHITE MAIZE (<i>Zea mays</i> L.) INBRED LINES <i>Dawaki K.D., Ibrahim A.K, Umar, A.A and Gaya, U.H.</i>	68-75
PROFITABILITY AND EMPLOYMENT GENERATION FROM SUPPLY OF COMPOST FERTILIZER IN KADUNA STATE, NIGERIA: A WAY TOWARDS REDUCING UNEMPLOYMENT <i>Sulaiman, M., Magaji, B. D. and Abdullahi, A.</i>	76-86
EFFECT OF SOME PRE-EMERGENCE HERBICIDES ON WEED INFESTATION AND VARIETIES OF GROUNDNUT (<i>Arachis hypogea</i> L.) IN SUDAN SAVANNA OF NIGERIA <i>Yawale, M. A., Sa'ad, A.M., Sarkin Fulani, M, and Ibrahim, M. B.</i>	87-95
ANALYSIS OF CONSUMER DEMAND FOR FERMENTED CASTOR OIL SEED (OGIRI) IN ANAMBRA STATE, NIGERIA <i>Ibeagwa, O.B, Essien , A.U., Benchendo, G.N., Ehirim, N.C. Iyede E.I. and Onwuazombe O.L.</i>	96-102
EFFECT OF BROILER DROPPINGS AND MYCORRHIZA FUNGI ON THE CONTROL OF MELOIDOGYNE INCOGNITA ON YIELD OF CUCUMBERS (<i>CUCUMIS SATIVUS</i> L.) <i>Nkechi B. IZUOGU , Oluwatoyin E. BELLO , and BELLO Oluwasesan M.</i>	103-112
SURVEY OF MANGO ANTHRACNOSE (<i>Colletotrichum gloeosporioides</i> (PENZ.) SACC.) IN FOUR AGRO-ECOLOGICAL ZONES OF NIGERIA <i>Lurwanu, Y., Alao, S.E.L. Tijjani, I., Mustapha, S and Zarafi, A.B</i>	113-121
REACTION OF EGGPLANT (<i>Solanum melongena</i> L.) VARIETIES AND ROMA VF TOMATO TO ROOT-KNOT NEMATODES (<i>MELOIDOGYNE INCOGNITA</i>) IN SAMARU ZARIA <i>Abdulsalam, S., Chindo, P. S., Agbenin, N. O., and Onu, I.</i>	122-130
PLANT-PARASITIC NEMATODES ASSOCIATED WITH SUGARCANE (<i>SACCHARUM</i> SPP. L.) IN SOME SELECTED LOCATIONS IN ZARIA LOCAL GOVERNMENT AREA OF KADUNA STATE, NIGERIA <i>Abdulsalam, S., Alhassan, F., and Chindo, P. S.,</i>	131-139
DETERMINANTS OF ALLOCATIVE EFFICIENCY OF NON-CONTRACT COTTON FARMING IN KATSINA STATE, NIGERIA <i>Adamu, H. D., Umar, A.S.S. and Yakubu, S.A.</i>	140-145

DETERMINANTS OF RURAL HOUSEHOLDS' INCOME DIVERSIFICATION AMONG SMALLHOLDER MAIZE FARMERS IN DRYLAND AREAS OF NORTHERN NIGERIA <i>Halliru M., and Bara'u S.S</i>	146-156
PERCEIVED TRAINING NEEDS OF COMMERCIAL PIG FARMERS IN OGBOMOSO AGRICULTURAL ZONE OF OYO STATE, NIGERIA <i>Owoade E.O</i>	157-164
A SURVEY OF HELMINTH PARASITE IN LOCAL BREED OF CHICKENS SLAUGHTERED AT KATSINA STATE CENTRAL MARKET <i>H.U. Babba, F. Bello and A.Z. Sanus</i>	165-169
DETERMINANTS OF WOMEN PARTICIPATION IN INCOME GENERATING ACTIVITIES IN DOGUWA LOCAL GOVERNMENT AREA, KANO STATE, NIGERIA <i>A. D. Abubakar, S. A. Makama, L. L. Yakubu</i>	170-174
INFLUENCE OF A COMMERCIAL PROBIOTIC ON SOME PERFORMANCE INDICES IN AFRICAN CATFISH (<i>Clarias gariepinus</i>) FINGERLINGS RAISED IN PLASTIC TANKS <i>Umaru, J., Oladele, A. H. and Dogara. A</i>	175-184
ECONOMIC ANALYSIS OF RODENTICIDE USE AMONG MAIZE-CASSAVA FARMERS IN KWARA STATE, NIGERIA <i>*Adebisi L.O^a, Jimoh O^a, Jonathan A.^b, Osasona K. K^a, and Omofaiye M.O^a</i>	185-191
PRODUCTIVITY OF COWPEA AS INFLUENCED BY BRADYRHIZOBIAL STRAINS AND PHOSPHORUS LEVELS IN THE SUDAN SAVANNA OF NIGERIA. <i>Musa M.,¹ Tadda S.A.,¹ and Jari Sanusi.¹</i>	192-199
PREVALENCE AND HOST RELATED RISK FACTORS OF ECTOPARASITES ON DOMESTIC CHICKEN IN DUTSINMA LOCAL GOVERNMENT AREA KATSINA STATE <i>*¹Jamilu R.Y, ¹Salisu U.S, ¹Jacinta N.I.</i>	200-206
EVALUATION OF SOME QUALITATIVE TRAITS IN SAHELIAN GOATS IN KATSINA STATE, NIGERIA <i>*¹Rotimi, E.A., ²Momoh, O.M and ²Egahi, J.O</i>	207-211
EFFECTS OF DRIED YELLOW CASHEW PULP IN DIETS OF WEST AFRICAN DWARF GOATS ON <i>IN VITRO</i> FERMENTATION PARAMETERS, VOLUME OF GAS PRODUCED AND FERMENTATION CHARACTERISTICS <i>*Okpanachi, U, Luka, J. S and Akpensuen, T.T</i>	212-219
COMPETITIVENESS OF TOMATO PRODUCTION IN KOKONA LOCAL GOVERNMENT AREA OF NASARAWA STATE, NIGERIA <i>¹Onuk E.G., ²Ibrahim H.Y. and ¹Umar, H.S</i>	220-226
PROFITABILITY ANALYSIS OF SESAME VALUE CHAIN ALONG JIGAWA-KANO AXIS, NIGERIA. <i>Y. N. Katanga¹; P. R. Waziri-Ugwu² and E N Gama¹</i>	227-234
DETERMINING THE PERCEIVED CONSTRAINTS AFFECTING CASSAVA FARMERS IN KWARA STATE OF NIGERIA <i>*Sadiq, M.S¹., Singh, I.P²., Ahmad, M.M³., Lawal, M⁴., Kamaldeen, N⁵ and Sani, T.P⁶.</i>	235-247
ASSESSMENT OF SEEDLING DAMPING-OFF AND WILT DISEASES OF IRRIGATED SESAME (<i>Sesamum indicum</i> L.) IN MAIDUGURI, NIGERIA <i>Mohammed, Z. H* and Khobe, E. P</i>	248-253

DIVERSIFICATION OF THE NIGERIAN ECONOMY THROUGH AGRICULTURE: THE EFFECT OF INDUSTRIALIZATION POLICY AND SAPON THE NIGERIAN TEXTILE INDUSTRY Aliyu A. Ammani	254-260
PERCEIVED CONSTRAINTS AFFECTING HOMESTEAD FISH FARMING IN KOGI STATE, NIGERIA *Sadiq, M.S ¹ ., Singh, I.P ² ., Ahmad, M.M ³ ., Lawal, M ⁴ ., Shehu, H.O ⁵ ., Sani, T.P ⁶ . and Yusuf, T.L ⁵ .	261-272
IMPROVEMENT OF NODULATION AND NITROGEN FIXATION OF GROUNDNUT (<i>Arachishypogaea</i> L.) USING PASTURE AND GRAINLEGUME RHIZOBIA ISOLATES INDIFFERENT SOILMANAGEMENT. * ^{1,2} Yahaya, S. M., Aliyu ¹ , I. A.,and ^{1,3} Bello, S. K.	273-283
COMPARATIVE ANALYSIS OF RAINFALL TREND AND VEGETATION DYNAMICS IN MOKWA AND RIJAU LOCAL GOVERNMENT AREAS OF NIGER STATE, NIGERIA *Umar A., Muhammed M., Suleiman Y. M. And Abdulkadir A.	284-293
Screening of downy mildew <i>Sclerosporagraminicola</i> (Sacc.) infection and rating of pearl millet [<i>Pennisetumglaucum</i> (L.) R.Br.] varieties (<i>Maiwa</i> and <i>Gero</i>) and their hybrids M.H. Ati ¹ and G. Y. Jamala ^{2*}	294-299
AUDIENCE ANALYSIS OF KARTAU AGRICULTURAL RADIO PROGRAMME ON KATSINA STATE RADIO, KATSINA STATE, NIGERIA. ¹ Bodaga Thaddeus, ² Akinyemi Mudashiru and ¹ UmarDanhalima	300-307
LISTENERS' PERCEPTION OF <i>FARMERS' DIGEST</i> AGRICULTURAL RADIO PROGRAMME OF JOY FM OTUKPO, BENUE STATE NIGERIA. Bodaga Thaddeusand EbenehiOjomugbokenyode.	308-319
HAEMOCYTOLOGY AND SERUM BIOCHEMISTRY OF BROILERS FED GINGER (<i>ZINGIBER OFFICINALE</i>) AND GARLIC (<i>ALLIUM SATIVUM</i>) AS FEED ADDITIVES IN DUTSINMA LGA KATSINA STATE NIGERIA Yahaya, M.A., *Salisu, U.S., Jamilu, R.Y. and Nnanna A.O.	320-324



COMPARATIVE ANALYSIS OF RAINFALL TREND AND VEGETATION DYNAMICS IN MOKWA AND RIJAU LOCAL GOVERNMENT AREAS OF NIGER STATE, NIGERIA

*Umar A., Muhammed M., Suleiman Y. M. And Abdulkadir A.

Department of Geography, Federal University of Technology Minna, Niger State, Nigeria

*Corresponding Author (08067869941; Email: ahmedumar4@gmail.com)

Abstract

The study aimed at comparative analysis of trend in rainfall and Vegetation dynamics over Mokwa and Rijau Local Government Areas. Gridded satellite daily rainfall data for the periods of 1987-2017 and data from remote sensing image for 1987, 2002 and 2017 were extracted and used. The Normalized Difference Vegetation Index (NDVI) was used for satellite image, Standardized Precipitation Index (SPI) for gridded satellite data while simple linear regression was used to determine the relationship between rainfall and vegetation. Findings revealed that in Mokwa, the year 1994 had the highest positive value of SPI (1.62) and lowest value in 2000 (-2.75), four years were observed to be above normal wetness with five years below normal dryness. While in Rijau, six years were observed to be above normal wetness with three years below normal dryness. In Mokwa, the NDVI value was observed to be between 0.81 and -1 in 1987 but decreased to between 0.405 and -0.12 in 2017. While in Rijau, it was between 0.96 and -0.97 in 1987 but decreased to 0.54 and -0.23 in 2017. The linear regression analysis revealed a value of R^2=0.743 for Mokwa and R^2=0.152 for Rijau. It was concluded that rainfall is the major causative factor in the dynamics of vegetation condition in the study areas, while other meteorological parameters like temperature and humidity as well as anthropogenic activities in the areas may have contributed to vegetation dynamics. The study recommends further investigation on other factors responsible for vegetation dynamics in the study areas.

Keywords; Comparative, trend, Rainfall, Vegetation and Dynamics

INTRODUCTION

Over the years, the rainfall trend coupled with urbanization as a result of increase in population has been going on in the study areas. The increasing population and demand for land is threatening the existence of vegetal cover which demands effective measurement and understanding of the health dynamics of vegetal cover across the country. Investigating the state or the amount of vegetation is one of the paramount objectives in the field of land surface related remote sensing applications. The availability of frequent data that are internally consistent over a sufficient period and provide information on the spatial complexity as well as on the temporal dynamics of vegetation is prerequisite for successful monitoring of vegetation cover (Seiler, 2010). Remote sensing of the vegetation condition is based on the fact that healthy plants have more chlorophyll and therefore absorbs more Visible (VIS) radiation and reflects more Near- InfraRed (NIR) radiation (Rimkus, et al., 2017). High spatial and temporal rainfall trends have been a big problem in monitoring agricultural phenomenon over Africa. This is because any excessive or deficit of rainfall amount may result to

change in vegetation and or failure. It is necessary to emphasize that the vegetation (and hence Normalized Difference Vegetation Index (NDVI) values) response to the meteorological conditions in a given year depends on the geographical region and environmental factors such as vegetation type, soil type and land use (Usman et al., 2013). Poor land utilization practices, especially in subsistence farming and nomadic pastoral economies in the majority of the African countries have accelerated the loss of natural vegetation and exacerbated the problem of climate change (Bamba, 2015). Historical baselines of forest cover are needed to understand the causes and consequences of recent changes and to assess the effectiveness of land-use policies (Kim et al., 2014). Many methods and in particular various vegetation indexes have been introduced to quantify certain vegetation parameters. However, all of them take into account that vivid green vegetation shows a specific 'reflection signal in the red and near infrared part of the electromagnetic spectrum (Seiler, 2010). Therefore, in most cases NDVI values are complexly analysed with meteorological and agro-meteorological drought indicators such as the Standardized Precipitation Index (Gebrehiwotet

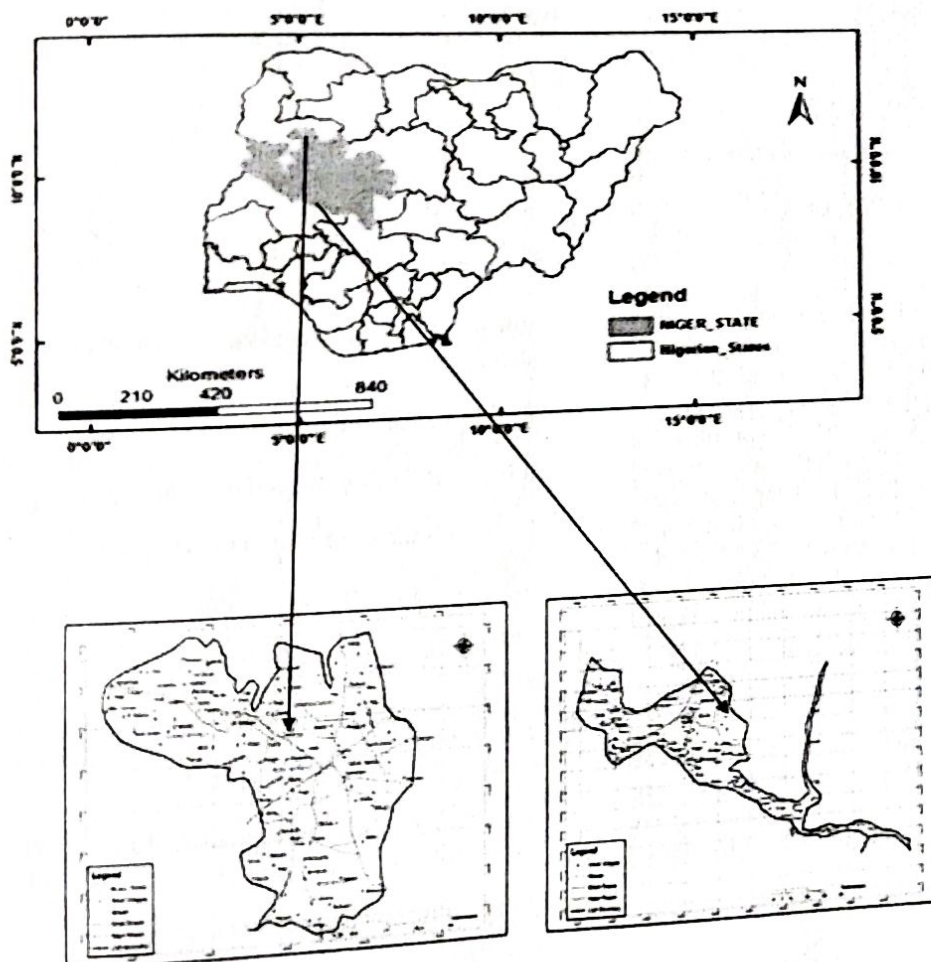
al., 2011; Gaikwad and Bhosale, 2014; Staggeet al., 2015).

There are now more concerns about vegetation changes and its attendant consequences on the environment. It is evident that the Nigerian natural vegetation if not conserved and sustainably managed will lose its natural state (Fashaeet al., 2017). There is therefore an urgent need to create awareness about the consequences of these changes and bring a halt to the trend. Also increase in population has resulted in increase in consumption of wood for domestic purposes aggravate the environmental degradation and land use change. Bush burning and uncontrolled grazing are carried out elsewhere in the study areas thereby contributing immensely to the vegetation dynamics.

This study establishes a comparative relationship between trend in rainfall and vegetation dynamics in Mokwa and Rijau Local Government Areas of Niger State, Nigeria.

Study Area

Mokwa LGA is located in the southern part of Niger State between Longitude $4^{\circ}45'00''$ to $5^{\circ}45'05''$ East and Latitude $8^{\circ}45'00''$ to $9^{\circ}40'00''$ North and covers a total land area of $4,338\text{km}^2$. Rainfall usually starts by April/May and stops in October. It usually recorded an average of 200 days of rainy days for a year with an average mean annual rainfall of 1,300mm. The vegetation of the study area falls within the vegetation zone of Guinea Savanna which is a major vegetation zone across Niger state. Rijau LGA on the other hand is isolated in northern parts of Niger State located between Longitude $4^{\circ}70'05''$ to $5^{\circ}47'00''$ East and Latitude $10^{\circ}70'05''$ to $11^{\circ}35'02''$ North and covers a total land area of $3,196\text{km}^2$. The average annual rainfall of Rijau LGA is 1100mm with about 180 of rain days. The rain starts from May/June and stops in October. The vegetation of Rijau also falls within the vegetation zone of Guinea Savanna which is a major vegetation zone across Nigeria (Adefolalu, 1986) (Figure 1).



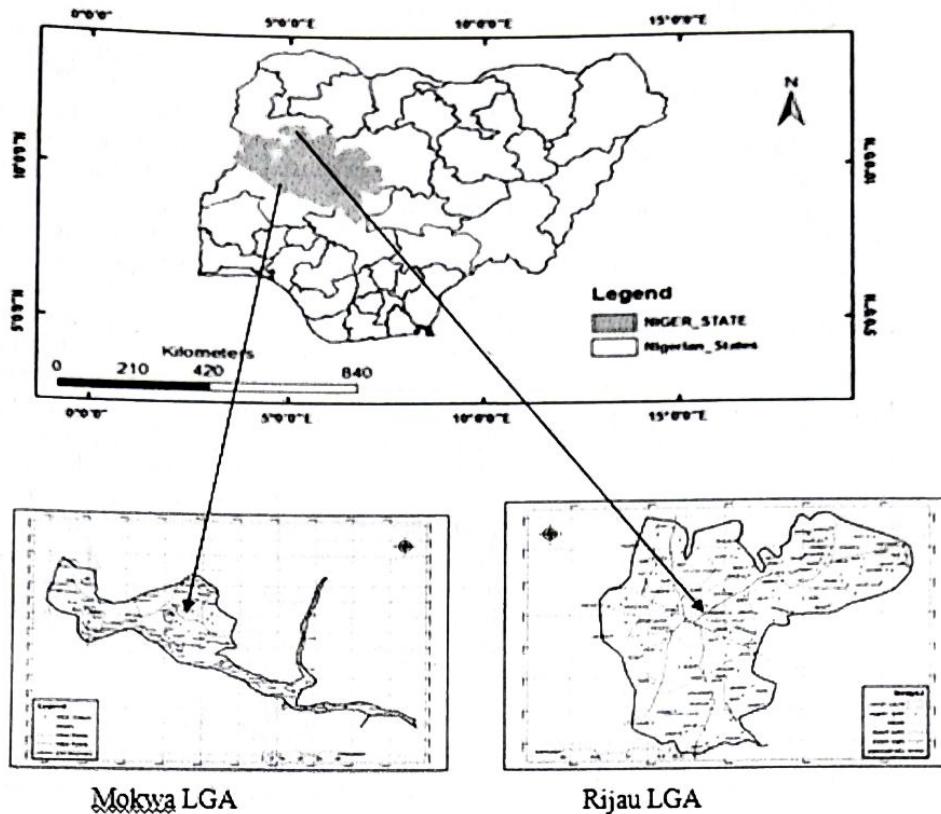


Figure 1: Map of the study areas

Source: Niger State Geographic Information System (NIGIS)

MATERIALS AND METHODS

Data Acquisition

This research uses satellite grid rainfall estimates data and satellite image. Daily rainfall satellite estimate for the study areas were used. The data were source from www.globalweather.tamu.edu. The datasets has a spatial resolution of 0.25° consisting of three (3) hourly/daily rainfall estimates from 1979 to the 2017. LandSat-5 image Thematic Mapper (TM) for 1987, LandSat 7 Enhance Thematic Mapper Plus (ETM⁺) for 2002, and LandSat 8 Operational Land Imager (OLI) 2017 all with 30m Resolution, sourced from United State Government via www.usgs.gov were used.

Data Analysis

The annual mean rainfall amount for the entire study area (1987–2017) were computed and analyzed. The annual rainfall values were computed for each data point from the daily rainfall amount using equation 1.

$$AR = \sum_{n=1}^d R \quad (1)$$

Where, AR is the annual rainfall amount at each station.

R is the daily rainfall amount at each station,

d is the number of days, and

l is the months of the year.

n is the total number of years.

SPI is a normalized index representing the probability of occurrence of an observed rainfall amount when compared with the rainfall climatology at a certain geographical location over a long – term reference period.

The Standardized Precipitation Index (SPI) is expressed in the form; $X - \bar{X} / \sigma$ (2)

Where σ is the standard deviation

X is annual rainfall for a given period.
 \bar{X} is annual mean rainfall for a given period

Negative SPI value represent rainfall deficit (dryness), while positive SPI values indicates

rainfall surplus (wetness). The SPI values ranges from -2.00 to 2.00 representing extremely dry and extremely wet respectively.

Table 1 SPI Climatic Index Values and their Drought Indicators

Climatic index	Drought indication
2.00 and above	extremely wet
1.50 to 1.99	very wet
1.00 to 1.49	moderately wet
- 0.99 to 0.99	near normal
- 1.00 to - 1.49	moderately dry
- 1.50 to - 1.99	severely dry
- 2.00 and less	extremely dry

Adopted from. McKee *et al.* (1993)

From the mean annual rainfall values from 1987 – 2017, the average rainfall for the study areas were computed. For the mapping of spatial pattern of trends from point data, Inverse Distance Weight (IDW) was the interpolation method adopted to monitor the distribution of rainfall which was acquired from nine rainfall data points within each of the study area. The analysis was done using ArcGIS 10.3 analysis tool. NDVI was calculated as the difference between reflectance in Near Infrared and Visible radiation.

$$NDVI = \frac{NIR - VIS}{NIR + VIS}$$

(3)

Where Near Infrared is the fourth band of landSat images and Visible is the third band.

The final NDVI products were depicted in the geographic grid with equal latitude and longitude intervals. The NDVI values ranges from -1 to +1. The negative index value can be recorded over the clear water bodies while values are close to 0 over the land without vegetation. The index value equal to 1 indicates perfect growing vegetation conditions. Rainfall and vegetation value were analyzed by the use of simple linear regression.

Comparisons were done between the two study areas to see the similarities and the differences through the use of bar graph and tables.

RESULTS AND DISCUSSION

Results of SPI values for Mokwa and Rijau LGA.

The computation of Standardized Precipitation Index for Mokwa and Rijau LGA as shown in Figure 2 revealed an increase in rainfall from 1987 to 1996. In Mokwa LGA the year 1994 had the highest positive value of SPI (1.62), while the lowest value was in the year 2000 (- 2.75), four years (1988, 1989, 1994 and 1995) were observed to be above normal wetness with five years (1999, 2000, 2001, 2011 and 2012) below normal dryness. Rijau LGA revealed an increase in rainfall from 1987 to 1997. The year 1989 had the highest positive value of SPI (1.70), while the lowest value was in the year 2000 (- 2.29), six years (1988, 1989, 1993, 1995, 1996 and 2003) were observed to be above normal wetness with three years (2000, 2011 and 2013) below normal dryness.

The temporal trend in Mokwa LGA indicates that the first decade of the study period witness normal wetness of positive SPI value. While the second and third decade witness an alternate positive and negative SPI value meaning that some years may be wet while others may be dry.

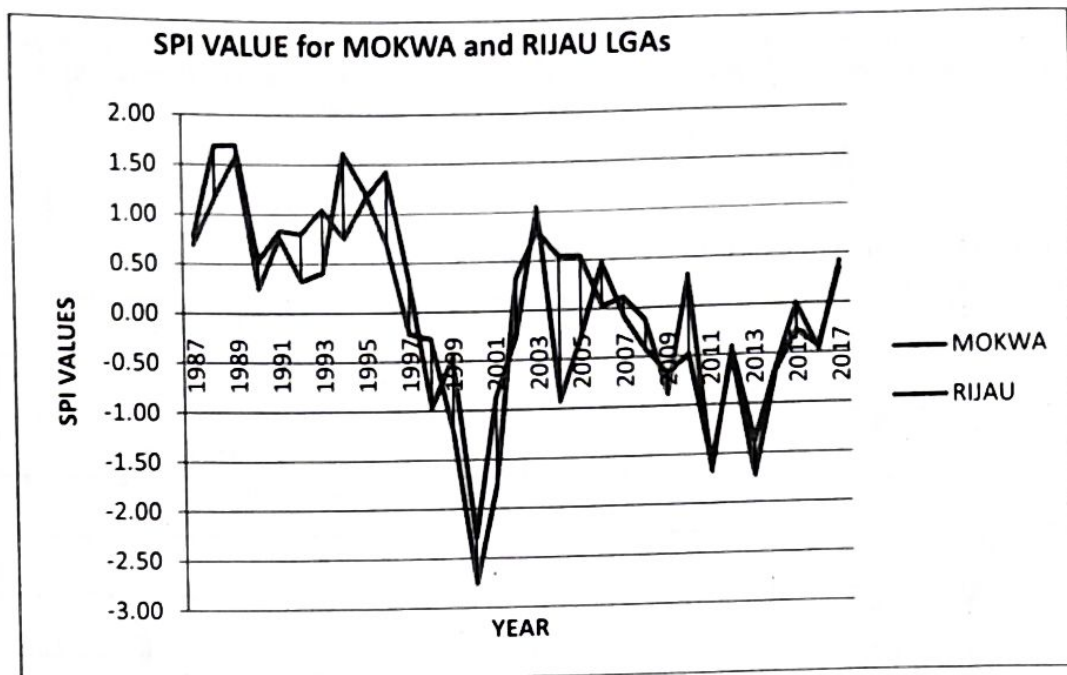


Figure 2: SPI values for Mokwa and Rijau LGA.
Source: Field Survey(2018)

The results of spatial trends in mean rainfall from 1987 – 2017 in Mokwa and Rijau LGA.

The maps of spatial trend (Figure 4.2) indicate that the mean annual rainfall for Mokwa from 1987 – 2017 (c) revealed a value of 1390.49mm as the highest occurring in the south – eastern part with the lowest value of 946.007mm in the north – western part of the LGA; 1987 – 2002 (a) indicates a value of 1500.16mm as the highest occurring in the north – eastern part with the lowest value of 1108.02mm in the north – western parts of the LGA and 2002 – 2017 (b) shows a value of 1275.15mm as the highest occurring in the south – eastern part with the lowest value of 769.08mm in the north – western part of the LGA. While the mean annual rainfall for Rijau from 1987 – 2017 (c) revealed a value of 1087.61mm as the highest occurring in the eastern part with the lowest value of 1018.00mm in the western part of the LGA; 1987 – 2002 (a) indicates a value of 1300.77mm as the highest occurring in the south – eastern part with the lowest value of 1143.48mm in the north, while the north – western parts shows moderate values between the two extremes and 2002 – 2017

(b) showed a value of 920.39mm as the highest occurring in the north – western parts and southern parts with the lowest value of 652.335mm in the northern part.

The spatial trend in annual mean rainfall from 1987-2017 in Mokwa shows a wider range of trend of about 444.483mm. This wider range of trend contributes to the fact that some parts of the LGA may witness wetness while other parts may be witnessing dryness. This trend may be attributed to the large area coverage of the LGA. The spatial trend in rainfall may not be attributed to the longitudinal or latitudinal variation as some area of the same longitude and latitude has different amount of mean rainfall. This signals that there may be other factors like temperature variation contributing to increase in rainfall in the area. Urbanization and deforestation are visibly taking place in area as a result of increase in population. While Rijau’s spatial trend in mean annual rainfall 1987-2017 indicates a slight range of trend of 69.61mm. The slight trend may signal that the LGA may witness rainfall at equal amount and at the same time.

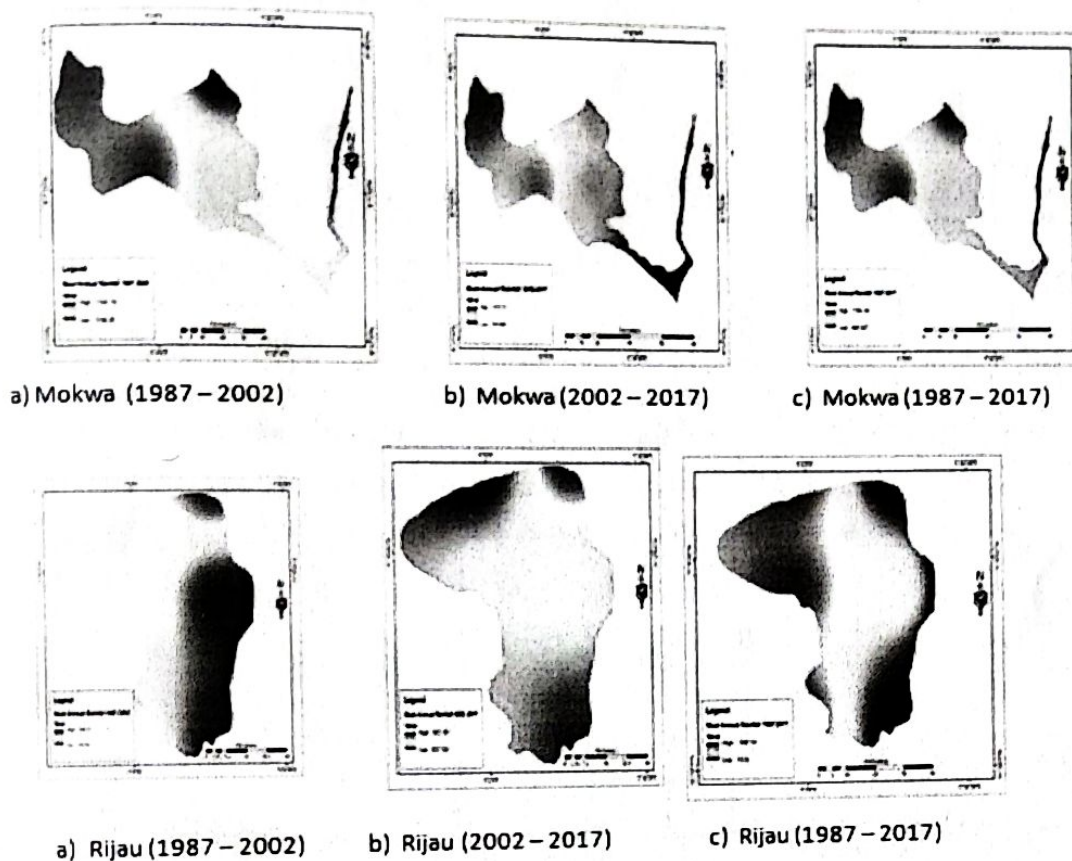


Figure 3: The spatial trends in mean rainfall from 1987 – 2017 in Mokwa and Rijau LGAs.
 Source: Field Survey (2018)

Results of NDVI Analysis for Mokwa and Rijau LGA.

The NDVI analysis (Figure 4) indicates that Mokwa records between 0.81 and -1 NDVI value in 1987 (a) but decreased to between 0.405 and -0.12 in 2017 (c). In 2002 (b) the NDVI value was

observed to be between 0.52 and -1. While in Rijau LGA the NDVI value was observed to be between 0.96 and -0.97 in 1987 (a) but decreased to between 0.54 and -0.23 in 2017 (c). In 2002 (b) the NDVI value was observed to be between 0.76 and -0.96.

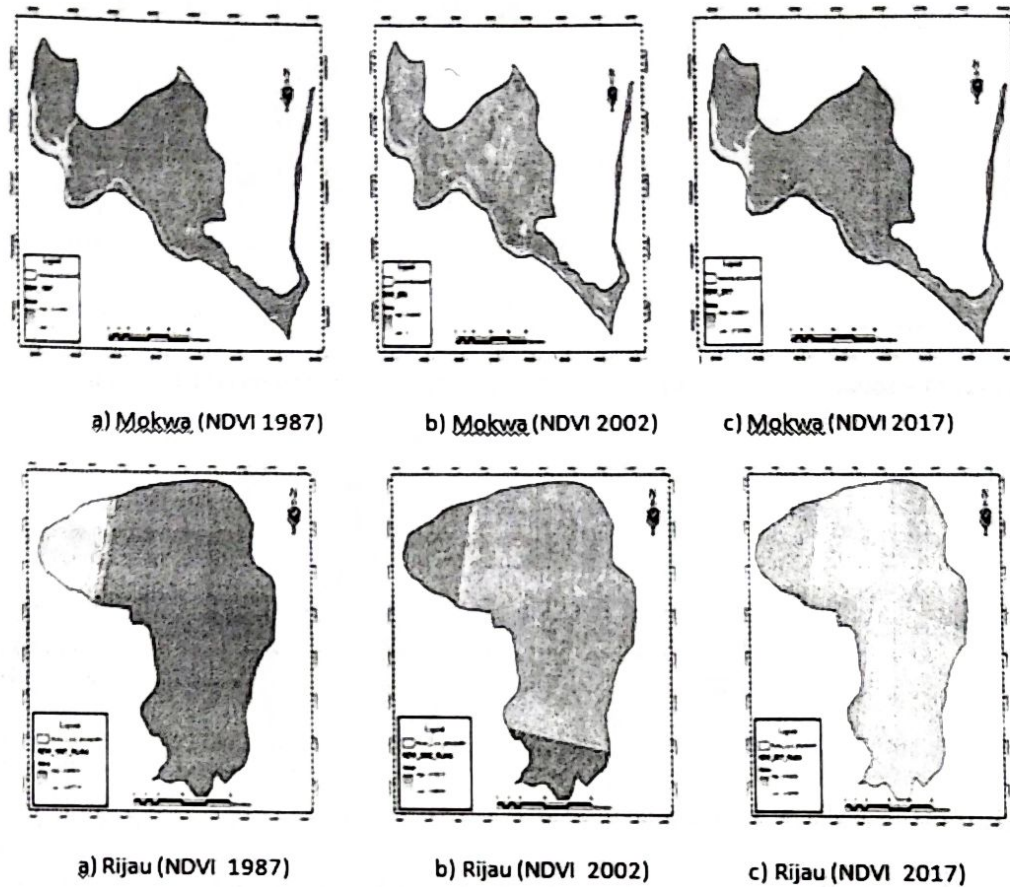


Figure 4: NDVI analysis for Mokwa and Rijau LGA.
Source: Field Survey(2018)

NDVI values in the analyzed areas are determined by the amount of rainfall and other factors such as urbanization, population increase and agricultural activities. On average, the active rainy season in the study areas lasts from the end of April or beginning of May until the middle or end of October. The spatial pattern of the NDVI trend is closely related to the spatial trend of rainfall. The NDVI analysis for Mokwa indicates that a high value of NDVI 0.8 in 1987 was drastically decreased to 0.4 in 2017. This high rate of decrease in vegetation cover may not be unconnected to the fact that since late 1990's rapid urbanization as a result of population increase have been going on in the area. The population increase also resulted to mass deforestation in the area as people compete for fire wood for both domestic and commercial purposes. The rate of deforestation in the LGA took a different dimension in late 2000 as some group of individuals settled around Mokwa – Bokani axis of the local government. These groups of people

source their income from fire wood sales in commercial quantity most at time load of trailer for onward movement to other parts of the country. The wide use of charcoal from early 2000 to date has also contributed a lot in time of decrease in vegetation cover. Although government has put in place some agencies to control the trend, however their active control of tree falling has not yielded any positive result. While in Rijau a high value of NDVI 0.96 in 1987 was drastically decreased to 0.54 in 2017. This high rate of decrease in vegetation cover may be attributed to wide use of charcoal from early 2000 to date. Also increase in agricultural activities may also be contributing in reducing the vegetation cover. Decrease in rainfall amount in late 2000 may also have contributed to the growth of vegetation as all the plants are directly dependent on rainfall for survival. A summary of the NDVI values for both Mokwa and Rijau LGA indicating the high and low values is presented in Table 4.1

Table 2 Summary of the NDVI values for Mokwa and Rijau

Year	Mokwa (High)	Mokwa (Low)	Rijau (High)	Rijau (Low)
1987	0.81	-1.0	0.96	-0.97
2002	0.52	-1.0	0.76	-0.96
2017	0.40	-0.12	0.54	-0.23

Source: Field Survey(2018)

Results of Linear Regressions for Mokwa and Rijau LGA.

The linear regression analysis (Figure 5) revealed a value of $R^2 = 0.743$ for Mokwa which indicates a perfect relationship between rainfall and vegetation dynamics which is in agreement with the work of Bamba, (2015) who found linear correlation between rainfall and NDVI to be high in large area of the savannah region. it achieve 0.8 over Ghana and Nigeria. The high values are mainly observed in region where the annual rainfall is around 1000

mm. So the vegetation growing depends directly on rainfall. While in Rijau $R^2 = 0.152$ was observed, indicating weak positive relationship between rainfall and vegetation dynamics which implies that aside from rainfall, other factors may be contributing to the vegetation loss such as high temperature due to high rate of deforestation in the area. NDVI results indicate a clear reduction in the density and distribution of vegetation since the beginning of the study period and towards the end of the study period.

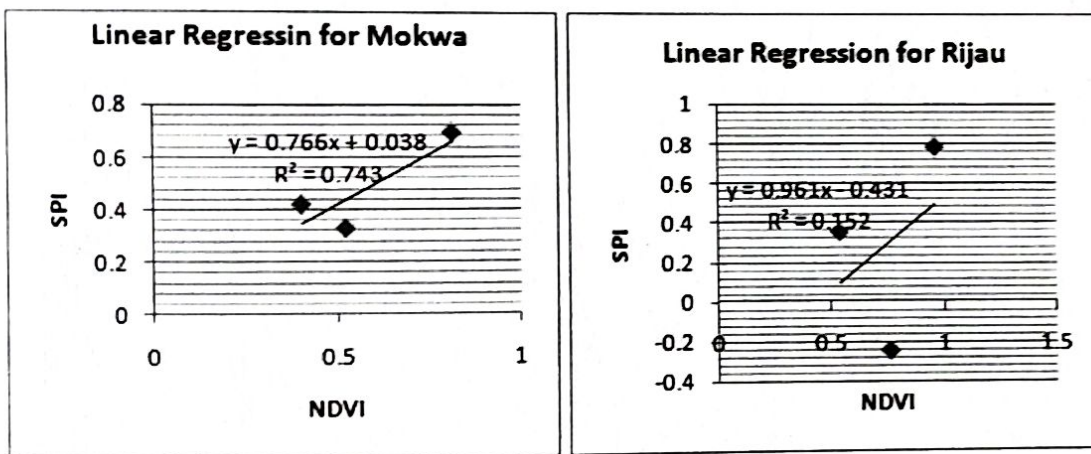


Figure 5: Linear Regressions for Mokwa and Rijau LGA.

Source: Field Survey(2018)

CONCLUSION AND RECOMMENDATIONS

The study was able to analyze and compare rainfall trend and vegetation dynamics in Mokwa and Rijau LGA and observe that there has been different but similar pattern for the entire study period. There was a decrease in rainfall in the second half of the study period and a decrease in (NDVI) for that region concurrent with rainfall decrease. The map of spatial trend in rainfall revealed that the rainfall over the study areas is not spatially distributed. The temporal trend in rainfall shows a positive trend in the first decade of the study period and was characterized by alternation of positive and negative trends in the last two decades of the study period. The NDVI analysis indicates that the vegetation cover over the study

areas has continued to decrease throughout the study period. Mokwa LGA witnesses a high trend in rainfall and vegetation dynamics than Rijau LGA with a low trend in rainfall and vegetation dynamics. Linear relationships were observed between rainfall and vegetation dynamics in both Mokwa and Rijau local government areas.

The study recommends further investigation on other factors such as urbanization, population increase, agricultural activities as rainfall alone cannot be responsible for vegetation dynamics in the study areas.

The state ministry of Environment and Agriculture with other relevant agencies should advocate for afforestation practice in both study areas so as to reclaim the lost forest.

REFERENCES

- Adefolalu, D. O. (1986). Rainfall trends in Nigeria. *Theoretical and applied climatology* 37, 205- 219.
- Bamba, A. (2015). Land use change, vegetation dynamics and rainfall spatio-temporal variability over West Africa. Doctor of philosophy Degree Thesis Submitted to the School of Postgraduate Studies, the Federal University of Technology, Akure. Nigeria.
- Fashae, O., Olusola, A and Adedeji, O. (2017). Geospatial Analysis of Changes in Vegetation Cover over Nigeria. *Bulletin of Geography. Physical Geography Series*, No. 13 17-28. Available from 2017 <http://dx.doi.org/10.1515/bgeo-2017-0010>. Accessed date? 05/01/2018
- Gaikwad, Y. and Bhosale, R. (2014). Survey on predictive analysis of drought in India using AVHRR–NOAA remote sensing data, *International Journal of Advance Foundation and Resource Computation.*, 1, 2348–4853,
- Gebrehiwot, T., van der Veen, A., and Maathuis, B.(2011). Spatial and temporal assessment of drought in the Northern high - lands of Ethiopia. *International Journal of Applied Earth Observation*, 13, 309–321. Available from 2012 <https://doi.org/10.1016/j.jag.2010.12.002>, 2011. Accessed date?06/05/2018
- Kim, D.H., Sexton, J.O., Noojipady, P., Huang, C., Anand, A., Channan, S., Feng, M. and Townshend, J.R. (2014). Global, Landsat-based forest-cover change from 1990 to 2000. *Remote sensing of Environment*, 155: 178-193.
- Rimkus, E., Stonevicius, E., Kilpys, J., Maciulyte, V. and Valiukas, D., (2017) Drought identification in the eastern Baltic region using NDVI. *Earth System Dynamics*, 8, 627–637. Available from 17/07/2017 <https://doi.org/10.5194/esd-8-627-2017>. Accessed date? 25/04/2018
- Seiler, R., (2010). Characterisation of Long-Term Vegetation Dynamics for a Semi-Arid Wetland Using NDVI Time Series from NOAA-AVHRR. In: Wagner W., Székely, B. (eds.): ISPRS TC VII Symposium – 100 Years ISPRS, Vienna, Austria, IAPRS, XXXVIII, Part 7B.
- Stagge, J. H., Kohn, I., Tallaksen, L. M., and Stahl, K. (2015). Modeling drought impact occurrence based on meteorological drought indices in Europe, *Journal of Hydrology*. 530, 37–50. Available from 2015 <https://doi.org/10.1016/j.jhydrol.2015.09.039>. Accessed date?25/04/2018
- Usman, U., Yelwa, S. A., Gulumbe, S. U., and Danbaba A.(2013). Modelling Relationship between NDVI and Climatic Variables Using Geographically Weighted Regression, *Journal of Mathematical Sciences and Applications*, 1, 24–28.