

21

BAYERO JOURNAL OF PURE AND APPLIED SCIENCES

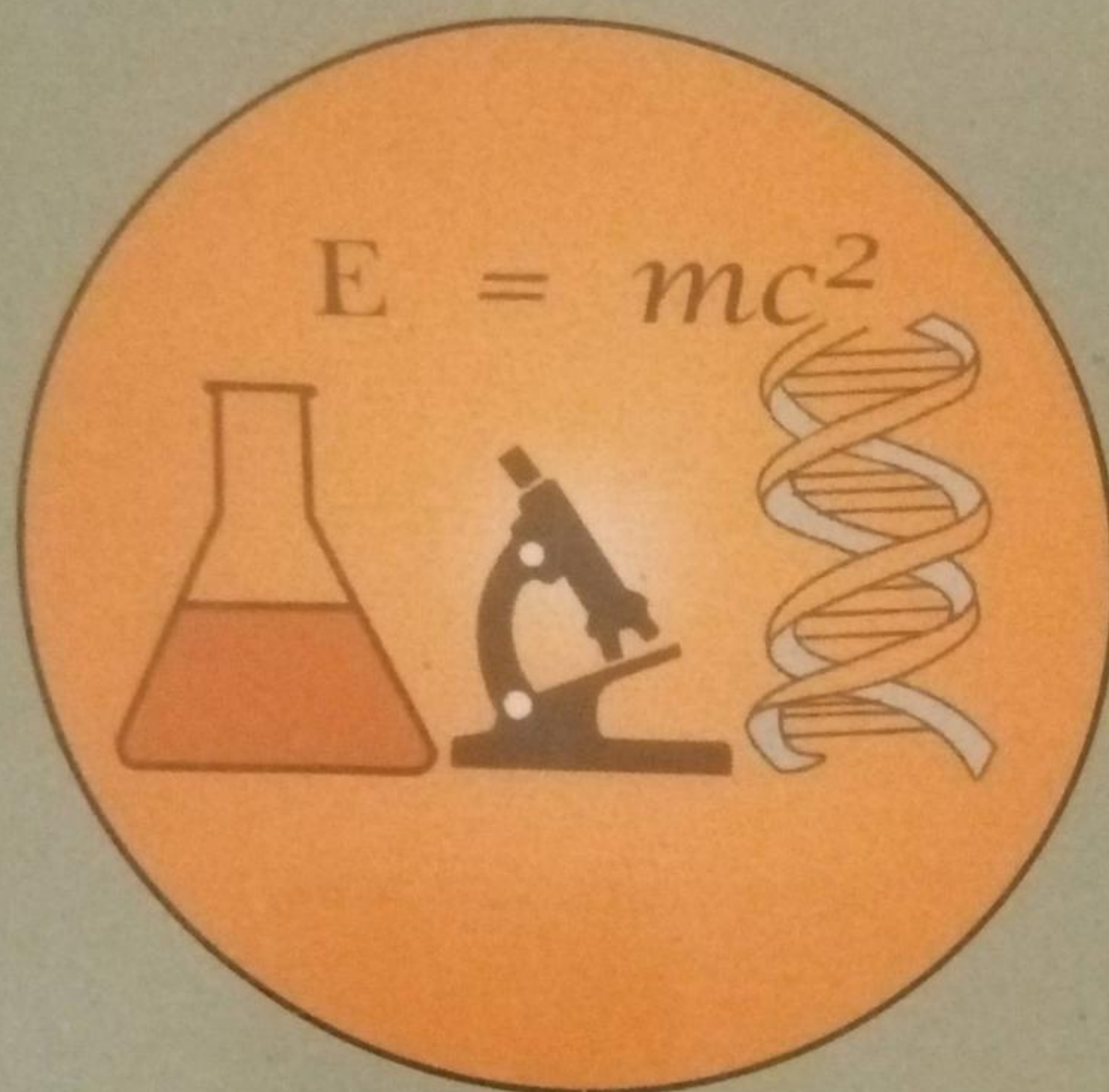


(BAJOPAS)

VOL. 5 NO. 2 DEC., 2012

21

ISSN 2006-6996



© Faculty of Science, Bayero University, Kano.

INTERNATIONAL JOURNAL

Basopas Volume 5 Number 2 December, 2012

BAYERO JOURNAL OF PURE AND APPLIED SCIENCES
(BAJOPAS)

VOLUME 5 NUMBER 2, DECEMBER 2012



© FACULTY OF SCIENCE, BAYERO UNIVERSITY, KANO, NIGERIA

Bajopas Volume 5 Number 2 December, 2012

BAYERO JOURNAL OF PURE AND APPLIED SCIENCES
(BAJOPAS)

VOLUME 5 NUMBER 2, DECEMBER 2012

PUBLISHED BY:
FACULTY OF SCIENCE, BAYERO UNIVERSITY, KANO, NIGERIA

ALL COPYRIGHT RESERVED
© FACULTY OF SCIENCE, BAYERO UNIVERSITY, KANO, NIGERIA

TYPESET AND PRINTING BY:
AMCO Printers,
No. 4 Biological Sciences Road,
Old Campus Business District,
Bayero University, Kano, Nigeria.
(☎ +2380 2356 7064)
email: al_amsak2004@yahoo.com

BAYERO JOURNAL OF PURE AND APPLIED SCIENCES (BAJOPAS)

EDITORIAL

The Editorial Board of the Bayero Journal of Pure and Applied Sciences (Bajopas) of the Faculty of Science, Bayero University, Kano is pleased to release its ninth edition, Volume 5, Number 2, December, 2012 to the national and international scientific community. The Journal contains well researched and reviewed scientific works that are adequately peer reviewed.

The publications aim is always to satisfy the goal of ensuring rapid and wide dissemination of results of scientific researches that could finally trigger the advancement of human kind in all its ramifications. The Journal's scope is wide in that it reported findings in the areas of pure and applied sciences, namely; Agricultural Sciences, Botany, Biochemistry, Chemistry, Computer Science, Engineering, Environmental Sciences and Geography. Also, areas of Laboratory Science, Technology, Mathematical Sciences, Microbiology, Physics, Medical Sciences and Zoology form part of the contents of the Journal.

Scientists in the academia, research institutes and industries who actively participated in the propagation of their works through this classical international medium are therefore congratulated. To this end, it would be pertinent to thank our team of trusted and talented professionals who ensured the objective editing of the manuscripts sent to them, inspite of all their tight schedules. The effort of Bayero University, Kano and other donor agencies that ensured the success of Bajopas is fully acknowledged.

With this, I would like to seize this opportunity to emphasize for a quick and prompt review process and submitting back the manuscript(s) to the publishers on time. This would surely encourage the progress of the Journal as well as the contributing authors. To the Editorial Board members, thank you for the support and cooperation. Accept my warmest regards.

Prof. M.D. Mukhtar,

Editor – in – Chief,

Bayero Journal of Pure and Applied Sciences (Bajopas),

Faculty of Science,

Bayero University, P.M.B. 3011, Kano

Email address: bajopass@yahoo.com

Website: <http://www.ajol.info/index.php/bajopas>

Also indexed at DOAJ and EBSCO host

BAYERO JOURNAL OF PURE AND APPLIED SCIENCES (BAJOPAS)

EDITORIAL BOARD

EDITOR-IN-CHIEF

Prof. M.D. Mukhtar
Department of Microbiology,
Bayero University, P.M.B. 3011, Kano,
Nigeria

BIOCHEMISTRY EDITOR

Dr. M.K. Atiku (Reader)
Department of Biochemistry,
Bayero University, PMB 3011, Kano,
Nigeria.

MATHEMATICAL SCIENCES EDITOR

Dr. Bashir Ali
Department of Mathematical Sciences,
Bayero University, PMB 3011, Kano,
Nigeria.

PHYSICS EDITOR

Dr. H. Maiunguwa
Department of Physics,
Bayero University, PMB 3011, Kano,
Nigeria.

BUSINESS/CIRCULATION EDITOR

Dr. M.M. Kashimbila (Reader)
Department of Physics,
Bayero University, PMB 3011, Kano,
Nigeria.

BIOLOGICAL SCIENCES EDITOR

Prof. A. H. Arzai
Department of Microbiology,
Bayero University, PMB 3011, Kano, Nigeria.

GEOGRAPHY EDITOR

Dr. Maharaz Yusuf (Reader)
Department of Geography,
Bayero University, PMB 3011, Kano, Nigeria.

CHEMISTRY EDITOR

Dr. S.Y. Mudi (Reader)
Department of Pure and Industrial Chemistry,
Bayero University, PMB 3011, Kano, Nigeria.

SECRETARY

Dr. Aminu Bukar
Department of Microbiology,
Bayero University, PMB 3011, Kano, Nigeria.

EDITORIAL ADVISERS

Professor M. S. Sule

Department of Biochemistry, Bayero University,
PMB 3011, Kano, Nigeria

Professor M. Y. Bello

Department of Mathematical Sciences,
Bayero University, PMB 3011, Kano, Nigeria

Dr H. N. Aliyu (Reader)

Department of Pure and Industrial Chemistry,
Bayero University, PMB 3011, Kano, Nigeria

Professor Inuwa Ibrahim

Department of Anatomy, School of Medicine,
Sultan Qabus University, Oman

Professor B. S. Aliyu

Department of Plant Science, Bayero
University, PMB 3011, Kano, Nigeria

Professor Yusuf Y. Deeni

School of Contemporary Sciences,
University of Abertay, Dundee, UK

Professor M.O. Fatope,

Department of Chemistry, School of Sciences,
Sultan Qabus University, Oman

Professor A. B. Gumel

Department of Mathematics, University of
Mannitoba, Winnipeg, Mannitoba, Canada
R3T 1N7

BAYERO JOURNAL OF PURE AND APPLIED SCIENCES (BAJOPAS)

ASSOCIATE EDITORS

- Prof. E.U. Essiet**
Department of Soil Sciences, Faculty of Agriculture,
Bayero University, Kano, Nigeria
- Prof. M.S. Sule**
Department of Biochemistry, Bayero University, Kano,
Nigeria
- Prof. J.A. Falola**
Department of Geography, Bayero University, Kano,
Nigeria
- Prof. M. Lawan**
Department of Biochemistry, Usmanu Danfodio
University, Sokoto, Nigeria
- Prof. B.S. Aliyu**
Department of Plant Science, Bayero University, Kano,
Nigeria
- Dr P. Mamza**
Department of Chemistry, Ahmadu Bello University,
Zaria, Nigeria
- Dr D.G. Diso**
Department of Physics, Kano University of Science and
Technology, Kano, Nigeria
- Dr. A.I. Salisu**
Department of Human Physiology, Faculty of Medicine,
Bayero University, Kano, Nigeria
- Dr. A.H. Kawo**
Department of Microbiology, Bayero University, Kano,
Nigeria
- Dr. Hamza Abba**
Department of Chemistry, Ahmadu Bello University,
Zaria, Nigeria
- Dr. Abiodun Falodun**
Department of Pharmaceutical Chemistry, Faculty of
Pharmacy, University of Benin, Benin City, Nigeria
- Dr. Y. Mustapha**
Department of Biological Sciences, Bayero University,
Kano, Nigeria
- Dr. F.O. Ekhaize**
Department of Microbiology, Faculty of Life Sciences,
University of Benin, Benin – City, Nigeria
- Dr. Garba Babaji**
Department of Physics, Bayero University, Kano,
Nigeria
- Dr. Nasiru Rabi**
Department of Physics, Ahmadu Bello University, Zaria,
Nigeria
- Prof. J.O. Amupitan**
Department of Chemistry, Ahmadu Bello University,
Zaria, Nigeria
- Prof. M. Kadiri**
Department of Botany, University of Agriculture,
Abeokuta, Ogun, Nigeria
- Prof. P.A. Audu**
Department of Biological Sciences, Ahmadu Bello
University, Zaria, Nigeria
- Prof. Auwalu Uba**
Department of Microbiology, Biological Science
Programme, Abubakar Tafawa Balewa University,
Bauchi, Nigeria
- Dr. B.I. Tijjani**
Department of Mathematical Sciences, Bayero
University, Kano, Nigeria
- Dr A.J. Adakole**
Department of Biological Sciences, Ahmadu Bello
University, Zaria, Nigeria
- Dr. Azeez - Akande, O.**
Department of Medical Microbiology, Faculty of
Medicine, Bayero University, Kano, Nigeria
- Dr. A.O. Musa**
Department of Physics, Bayero University, Kano,
Nigeria
- Dr. M. B. Ibrahim**
Department of Pure and Industrial Chemistry,
Bayero University, Kano, Nigeria
- Dr. M. H. Ali**
Department of Physics, Bayero University, Kano,
Nigeria
- Dr. Y.I. Zakari**
Department of Physics, Ahmadu Bello University, Zaria,
Nigeria
- Dr. N. I. Fagge**
Department of Physics, Bayero University, Kano,
Nigeria
- Dr. A. B. Baffa**
Department of Mathematical Sciences, Bayero
University, Kano, Nigeria
- Dr. Saminu Bala**
Department of Mathematical Sciences, Bayero
University, Kano, Nigeria
- Dr. A. Y. Manu**
Department of Parasitology, Faculty of Medicine,
Bayero University, Kano, Nigeria

BAYERO JOURNAL OF PURE AND APPLIED SCIENCES (BAJOPAS)

GUIDE TO AUTHORS

Aim/Scope

Bayero Journal of Pure and Applied Sciences (BAJOPAS) is an international journal that publishes original research and critical reviews in broad areas of Agricultural Sciences, Biological Sciences, Biochemistry, Chemistry, Computer Science, Engineering, Environmental Sciences, Geography, Laboratory Science and Technology, Mathematical Sciences, Microbiology, Physics and Medical Sciences. BAJOPAS is an online (hard copy available also) biannual publication (June & December) with intent to publish more frequently in the future depending on availability of accepted manuscripts.

Submission

Articles for publication should be sent to the Editor – in – Chief, BAJOPAS, Faculty of Science, Bayero University, P.M.B. 3011, Kano or through the Journal email address: bajopass@yahoo.com

Address

Postal: Faculty of Science, Bayero University, PMB 3011, Kano
Website: <http://www.ajol.info/index.php/bajopas>

Charges

Manuscripts submitted from Nigeria must be submitted along with a processing fee of ₦3,000.00, while articles submitted from other countries are not accompanied with processing charges. Articles not accompanied by the assessment fee will not be processed. Upon acceptance of a paper for publication, the corresponding author must submit the original paper (reviewed), corrected paper, CD version of the paper (CD-R) or through email and a publication fee of ₦7,000.00 (within Nigeria) or \$150 (outside Nigeria).

Review Process

Articles for publication will be peer reviewed by a minimum of 2 reviewers to ensure accuracy. The Board's decision on publishing a paper will be guided strictly by the reviewer's comments.

Copyright

Upon acceptance of a paper by the Journal, the author(s) have automatically transferred copyright of the paper to BAJOPAS. The transfer will ensure widest possible dissemination of information.

General Instructions

Authors are to submit three copies of the manuscript. Submitted papers should contain results from original researches that are not being considered for publication elsewhere or previously published. Manuscripts submitted to the journal are peer reviewed to ensure high standard.

Manuscripts should be readable and computer typed on white A4 paper, portrait, double spaced throughout leaving 1" wide margin on both sides. Manuscripts should be written in English language and should not exceed 12 pages. Any additional page attracts extra charge. The programme should be MS Word format.

S.I. units and metric systems of measurement are acceptable and Latin words should be in italics. Use of Arabic numerals before standard units should be avoided, and where used, they should be explained at their first mention.

Text: The text of the manuscript should appear in the following order. Title, authors name(s) and address (es), abstract, introduction, materials and methods, results, tables, figures, and plates, discussions, conclusion, recommendation(s), acknowledgement, references, (authors should please comply strictly to this format).

Title page: The title of the paper should unambiguously reflect the content and the main theme of the paper. The full names and addresses of authors (including names of institutions, country, Email address and telephone numbers) should be stated. In the case of joint authorship or multiple authorship, the name and mailing address of the author to whom further correspondence would be referred should be indicated, otherwise, the name of the first author on the list is assumed to be the correspondence author, not corresponding author. Authors' names should start with surnames then initials of other names.

Introduction: This should contain mainly essential background information and important relevant references. The objectives of the work and its relevance or contribution must be clearly stated. The literature cited must be discussed to show the relationships between the published and the research study.

Materials and Methods: New methods and modifications of established ones should be described in detail to enable repetition by other workers. For the established and published methods, references should be made to the relevant publications.

Generally acceptable, scientific terms should be used. Discuss the factors, problems encountered and the solutions as they apply to your study. Due attention should be given to experimental design and statistical analysis of data where applicable.

Results: Table and figures should be kept to minimum. Type each table on a separate sheet of paper. Each table must be numbered in Arabic numerals and should contain brief title on top. Figures and plates should be of scanned reproducible quality.

Discussion: This section may be combined with results. Avoid repetition of methodology and results in your discussion. Discussion should indicate clearly the significance and implications of the results obtained. Relate your work to published studies. References should be cited, e.g. Sule (2008), Mukhtar and Deeni (2001), or Atiku *et al.* (1987) if there are more than two authors.

Conclusion

Conclusion should be drawn from the aim(s) and objectives of the work. It should not carry too much detail of the results.

Recommendations

Should be optional and must be drawn from the study.

Acknowledgement

Optional and should acknowledge support and assistance rendered by individual(s) or organizations.

References

The reference style should be the APA format.

One author:

Abdullahi, I.L. (2003): A Study of Vegetable Cultivation in the Peri-urban Kano. *Journal of Applied and Pure Sciences*, 1(1):6 – 14.

Two authors:

Bukar, A. and Magashi, A.M. (2007): Antibacterial and Antifungal Effect of High pH and Paraffin Wax on Tomatoes, Oranges and Peppers. *African Journal of Biotechnology*, 6(6):720 – 722.
<http://www.academicjournals.org/AJB>

More than two authors

Soroceanu, M.A., Miao, D., Bai, X., Su, H., Goltzman, D. and Karaplis, A.C. (2004). Rosiglitazone Impacts Negatively on Bone by Promoting Osteoblast/Osteocyte Apoptosis. *Journal of Endocrinology*. 183:203-216.

BAYERO JOURNAL OF PURE AND APPLIED SCIENCES (BAJOPAS)

PUBLICATION CHARGES

A publication fee of Seven Thousand Naira (₦7,000.00) only will be charged per manuscript (from within Nigerian) and \$150 only (from outside Nigeria) on acceptance of the manuscript for publication. This is to be paid in certified bank draft, certified cheque or cash. In case of payment into the Journal's account, the bank teller should be photocopied or scanned and sent to the Secretary for confirmation.

The bank details are:

Bank: Diamond Bank Plc

Account Name: Aminu Bukar

Account Number: 0001670089

OFFPRINTS/REPRINTS

Any author who requires reprints of his/her paper should indicate this upon receipt of the acceptance letter and will be required to pay for the reprints.

ADVERTISEMENT RATES

Advertisement rates (full page)	- N25,000
Half page	- N15,000
Quarter page	- N10,000

Subscription rates (for two issues published in one year):

Institutions	- N5,000
Personal	- N3,000
Students	- N2,000

Orders for advertisement and subscription are to be made to the Circulation/Business Editor, Bayero Journal of Pure and Applied Sciences (Bajopas), Faculty of Science, Bayero University, P.M.B. 3011, Kano or via bajopass@yahoo.com

BAYERO JOURNAL OF PURE AND APPLIED SCIENCES (BAJOPAS)

TABLE OF CONTENTS

ELECTROLESS DEPOSITION AND ELECTRICAL CHARACTERIZATION OF n - Cu_2O LAYER Abdu, Y., Musa, A. O. and Darma, T. H.	1
STUDIES ON THE PHYSICOCHEMICAL PROPERTIES AND GENOTOXICITY OF EFFLUENTS FROM A DAIRY INDUSTRY Olorunfemi, D.I., Omo-Ataga, S.O. and Ofomata, R.C.	11
EMERGING AND RE-EMERGING INFECTIOUS AGENTS OF NOSOCOMIAL DISEASES - THE NEED FOR REVIEW OF HOSPITAL POLICY AND CONTROL STRATEGIES Azeez - Akande, O.	19
OCCURRENCE OF WOOD-AND ROOT- ROT BASIDIOMYCETES ON TREES IN BAYERO UNIVERSITY, KANO, NIGERIA Kutama, A. S., Saratu, A.O. and Asma'u, A. U.	26
EFFECT OF ORAL ADMINISTRATION OF AQUEOUS LEAVES EXTRACT OF <i>CASSIA OCCIDENTALIS</i> ON LIVER AND KIDNEY FUNCTIONS IN RATS Tanimu, H. and Wudil, A. M.	31
IMPACT OF PHYSICOCHEMICAL FACTORS ON ZOOPLANKTON SPECIES RICHNESS AND ABUNDANCE IN BOMPAI-JAKARA CATCHMENT BASIN, KANO STATE, NORTHERN NIGERIA Imam, T.S. and Balarabe, M.L.	34
COAL AND <i>ZEA MAYS</i> COB WASTE AS ADSORBENTS FOR REMOVAL OF METALLIC IONS FROM WASTEWATER Muhammad B. Ibrahim	41
IMPACT OF EMERGENT MACROPHYTES ON FISH CATCH IN NGURU LAKE Abubakar, M.M.	47
THERMOGRAVIMETRIC AND KINETIC STUDY OF METHYLOLMELAMINE PHOSPHATE TREATED - COTTON FABRIC Ayeni, N.A., Adeniyi, A., Abdullahi, N.N., Bernard, E. and Ogunleye, A.O.	51
THE POTENTIALS OF HENNA (<i>LAWSONIA INAMIS</i> L.) LEAVES EXTRACTS AS COUNTER STAIN IN GRAM STAINING REACTION Hafiz, H., Chukwu O. O. C., and Nura, S.	56
PROBING INTO EARTH SURFACE TO DETERMINE THE SUITABILITY OF THE FORMATION FOR BUILDING AND ENGINEERING WORKS IN PAIKO TOWN AND ITS ENVIRONS Dangana, L.M., Emenike, E. A, Alhassan, D.U, Kimpa, M.I. and Mukhtar, B.	61
PHYTOCHEMICAL COMPOSITION AND ACUTE TOXICITY EVALUATION OF AQUEOUS ROOT BARK EXTRACT OF <i>SECURIDACA LONGIPEDUNCULATA</i> (LINN) Auwal, S.M., Atiku, M.K., Wudil, A.M. and Sule, M.S.	67
EFFECT OF POTTING MEDIA AND WATERING FREQUENCIES ON THE GROWTH OF PEPPER FRUIT (<i>DENNETIA TRIPETALA</i>) SEEDLINGS Osaigbovo, A. U. and ² E.R Orhue	73
KINETICS STUDIES OF FUNGAL BIOGAS PRODUCTION FROM CERTAIN AGRICULTURAL WASTE Bishir, U. and M. M. Ekwenchi	79
DETECTION OF METALLO BETA LACTAMASES AMONG GRAM NEGATIVE BACTERIAL ISOLATES FROM MURTALA MUHAMMAD SPECIALIST HOSPITAL, KANO AND ALMADINA HOSPITAL KADUNA, NIGERIA Yusuf, I., Yusha'u, M., Sharif, A. A., Getso, M. I., Yahaya, H., Bala, J. A., Aliyu I. A. and Haruna, M.	84
STUDY ON PHYSICOCHEMICAL AND HEAVY METALS (Pb, Fe, Mn) CONCENTRATIONS OF TAP WATER IN DUTSE, JIGAWA STATE, NIGERIA Abdullahi, U.A., and Indabawa I.I,	89

EFFECT OF ANTIRETROVIRAL THERAPY ON SOME LIVER ENZYMES IN HIV/AIDS BREAST FED AND NON BREAST FED CHILDREN Kabir, N., Kiru, A.I., Kabir, H. And Yunusa, I.	93
EXTRACTION OF BIOLIQUID AND QUANTITATIVE DETERMINATION OF SATURATES, AROMATICS AND ORGANIC POLARS FROM FERMENTED BANANA (<i>MUSA SAPINTUM</i>) LEAVES Ekwenchi, M.M. and Yaro, M.N.	97
SEED-BORNE MYCOFLORA OF LOCAL AND IMPROVED WHEAT (<i>TRITICUM SATIVUM L.</i>) CULTIVARS IN KANO, NIGERIA Bashir, M., Mani, M.A and Kutama, A.S	101
ARTOCARPUS ALTILIS PROVING ITS WORTH IN TOXIC METAL REMOVAL FROM THE ENVIRONMENT Okolo, P. O., Irabor, E. E. I and Abugu, T. P.	104
ESTIMATION OF STATURE FROM HAND AND FOOT DIMENSIONS IN HAUSA NEONATES: A HOSPITAL-BASED STUDY Modibbo, M. H., Taura, M. G., Agu, O. C. and Bashir, U.	110
PROXIMATE COMPOSITION AND CONSUMER ACCEPTABILITY OF AFRICAN MUDFISH <i>CLARIAS GARIEPINUS</i> SMOKED WITH TWO ENERGY SOURCES Yola, I. A. and Timothy, O.	115
NUTRITIONAL STATUS IN PREGNANT WOMEN ATTENDING KIRU GENERAL HOSPITAL IN KANO STATE, NIGERIA Kabiru, T. Hafiz, A. and Atiku, M. K.*	119
GROUPINGS OF SOME HIV/AIDS VARIABLES USING AGGLOMERATIVE CLUSTERING TECHNIQUES Abdullahi, Z., Asiribo, O.E. and Dikko, H.G.	122
EFFECT OF NAPHTHALENE ACETIC ACID (NAA) ON IN VITRO ROOTING OF REGENERATED MICROSHOOTS OF GROUNDNUT (<i>ARACHIS HYPOGAEA L.</i>) Abdulmalik, M.M., I. S. Usman, J.D. Olarewaju and D. A. Aba	128
BIOLOGICAL NITROGEN FIXATION OF SOME GROUNDNUTS AS AFFECTED BY GENOTYPE AND APPLIED PHOSPHORUS AT SAMARU, NORTHERN GUINEA SAVANNAH OF NIGERIA Gabasawa, A. I. and A. A. Yusuf	132
EFFECT OF LOW GLYCAEMIC INDEX MEALS ON INSULIN SECRETION IN DIABETIC AND APPARENTLY HEALTHY SUBJECTS Alegbejo, J.O.	136
TRACE METAL CONCENTRATIONS IN LEACHATES FROM OPEN DUMPSITES IN LOKOJA, KOGI STATE, NIGERIA Olarewaju, G.O., Sa'id, M.D. and Ayodele, J.T.	143
EFFECTS OF WEED CONTROL AND COW DUNG MANURE ON GROWTH INDICES OF QUALITY PROTEIN MAIZE Mahadi, M. A., Dadari, S. A., Tanimu, B., Kuchinda, N. C., Sharifai, A. I. and Bature, M. S.	148
KYNURENINE AND SEROTONIN PATHWAYS: A REVIEW Adegbusi, H.S.	156
NATURE OF ERGASTIC SUBSTANCES IN SOME NIGERIAN ASTERACEAE Omoigui, I.D. and O. S. A. Aromose	160



PROBING INTO EARTH SURFACE TO DETERMINE THE SUITABILITY OF THE FORMATION FOR BUILDING AND ENGINEERING WORKS IN PAIKO TOWN AND ITS ENVIRONS

Dangana, L.M., *Emenike, E. A, Alhassan, D.U, Kimpa, M.I. and Mukhtar, B.
 Department of Physics, Federal University of Technology, Minna, Niger State
 *Department of Physics, University of Abuja.
 *Correspondence author: usalhassan@yahoo.com

ABSTRACT

This survey was carried out on an area covering about 629km² located within latitudes 6°37' E and 6°39' E and longitude 9°25' N and 9°27' N. A combination of lateral profiling with thirty profiles and vertical electrical sounding with ten (10) VES stations per zone. The lowest resistivity found on the resistivity contour map is about 600 Ωm, found at the North-eastern part of the map. The highest resistivity is about 7600 Ωm, found at the mid-central part of the contour map. Thicknesses are found to be between 9.00m to 35.00 m, 10.00 m to 33.00 m and 7.00 m to 22.00 m in different places within the three zones, that is A, B and C. Going by the result from the three zones, it is found that the area is generally good and suitable for buildings and other kinds of engineering work.

Keyword: Depth, Aquifer, Resistivity, Geoelectric and Basement

INTRODUCTION

Paiko town is the headquarters of Paikoro Local Government Area in Niger State of Nigeria. The Town is about 25km from Minna town, the capital of Niger State. It shares common boundary with Chanchaga Local Government Area at the Western part and with Suleja Local Government Area at the Eastern part of the state. It is located on the longitudes 9°25' and 9°27'N and latitudes 6°37'E and 6°39'E. The area is about 629km². In the area many geological surveys have taken place in the past by companies such as Ruwastan in Niger State and some individual too numerous to mention. The kind of survey the area lack till this time, is the geophysical survey that encompasses all the attributes of survey, as it will be seen in this work.

The parameters to be investigated include aquifer thickness, depth to basement and distribution of weathered basement. Groundwater formation, occurrence and movements depend on lithologic petrography, geo-structural, geotectonic, geomorphologic and other factor (Ogilvy, 1967). Geophysical method of investigation has found useful applications in areas such as bedrock delineation, saline water mapping, lithological boundary differentiation and determination of structural trends among others (Emenike, 2001; Dangana, 2009; Mallam, 2006;). This Geophysical survey employed the resistivity method using both Wenner Array and Schlumberger Array spreads. The reason for employing resistivity method is because it is very important in Engineering Geology, where this techniques is used to measure the depth to bedrock in a prospective dam site and location of shallow mineral deposits and underground water (Telford *et al*, 1989).

The main purpose of this work was to determine the depth to the basement, the distribution of the weathered basement, and to locate the points that are good aquifer within the study area.

Physiography and Geology

Paiko area is purely within the basement complex of Northern Nigeria, which started from far North and extend to Lokoja area of the Mid-Central Northern Nigeria. The geology of the basement complex rocks has been discussed in detail in the works of the likes of McCurry (1975), Van-Breemen (1981), and Ajibade (1980).

The area is, therefore, underlain by four lithologies as is evident from the rocks in the area. The rock types in this region include: granites, gneisses, quartzites as well as laterites, while most of the granites seen here are older granites and this distinguish them from the younger granites found in Jos area, (Figure 1).

MATERIALS AND METHODS

In this survey both Wenner and Schlumberger were used in data collection. The Wenner configuration was used for electric profiling, and the objective is to determine the resistivity variation laterally.

Resistivity measurements were made along some thirty profiles (Figure 2), covering an area of about 629km². Each profile runs North-South and are perpendicular to the express road running from Minna-Suleja, until all the field was covered.

As a result of the position of the site or town, which is surrounded or linked by many roads including feeder roads, it was convenient to divide the area into three zones namely; A, B and C.

This division into three zones enable us to carry out sounding, employing the Schlumberger spread. A total of thirty (30) VES stations were sounded, with ten (10) stations per zone. The theory behind these spreads are well discussed in detail in sources such as Telford, (1989), Parasnis (1986). In Wenner array method used for this investigation, the electrode are uniformly spaced in a line. From the arrangement, we have that $r_1 = r_4$ and $r_2 = r_3 = a$. Thus the apparent resistivity is

$$\rho_a = \frac{2\pi a \Delta V}{I} \quad \text{----- 1}$$

Where a is the spacing between the adjacent electrodes.

While in the other method, that is, schlumberger array, the current electrodes are spaced much further apart than the potential electrodes, from the first principles, then the apparent resistivity ρ_a is given by

$$\rho_a = \frac{2\pi a \Delta V}{I} \left[\frac{1}{(L-X)-I(L+X)} - \frac{1}{(L-X)+I} - \frac{1}{(L+X)-L} \right] \quad \text{----- 2}$$

Simplifying, since $(L - X) \gg 1$, we have

$$\rho_a = \frac{\pi (L^2 - X^2)^2}{2L (L^2 + X^2)} \left[\frac{\Delta V}{I} \right] \quad \text{----- 3}$$

Since this is often used symmetrically, $X = 0$, in which case

$$\rho_a = \frac{\pi L^2}{2L} \left\{ \frac{\Delta V}{I} \right\} \quad \text{----- 4}$$

where L = half the separation of the current electrodes, lL = half the distance of the potential electrode, V = potential difference measured and I is the current passed by the instrument, and X is the distance between the center of the spread to the midpoint of the potential electrodes we also find that $r_1 = (L - X) - L$, $r_2 = (L + X) + L$, $r_3 = (L - X) + L$ and $r_4 = (L + X) - L$

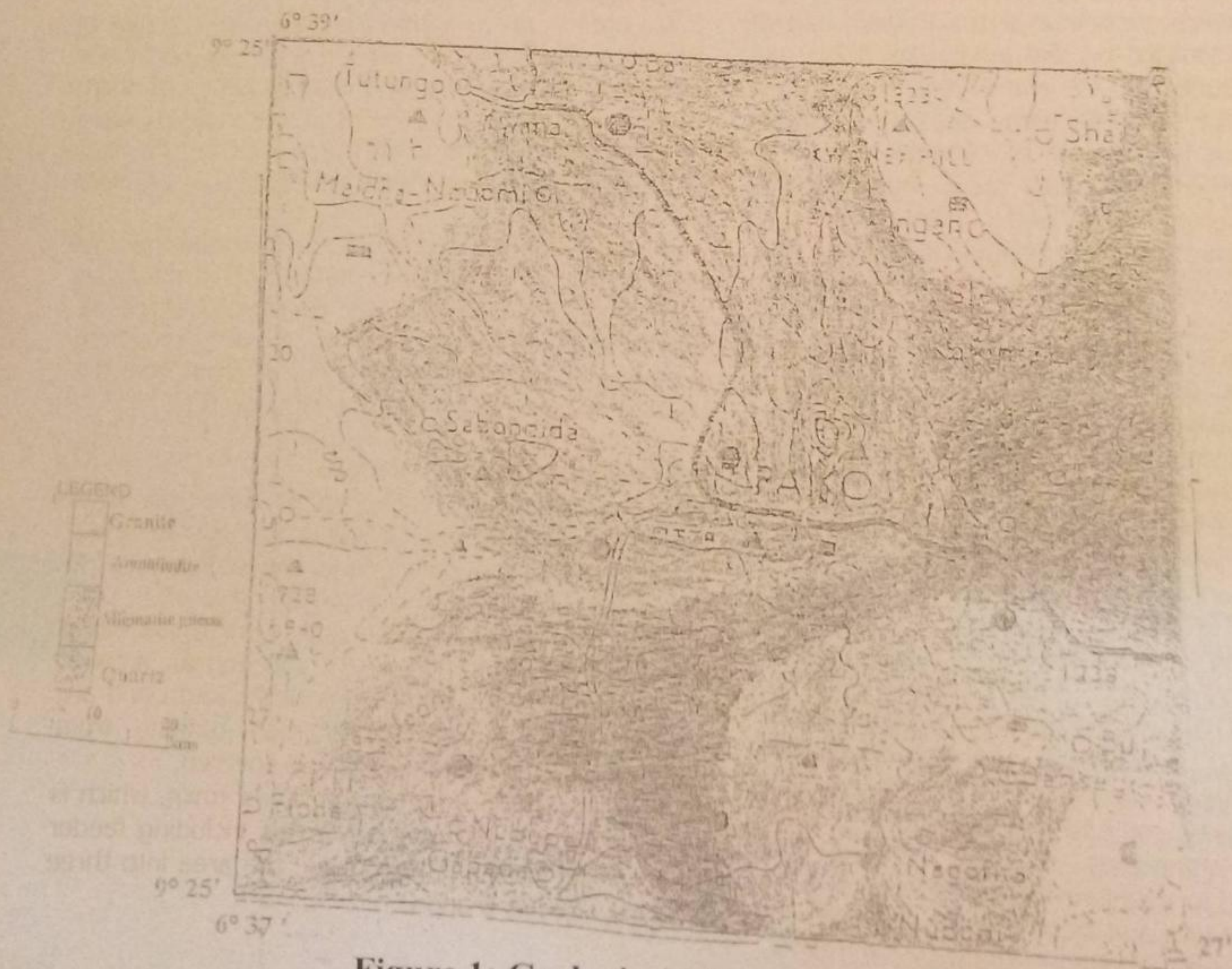


Figure 1: Geological Map of the Study

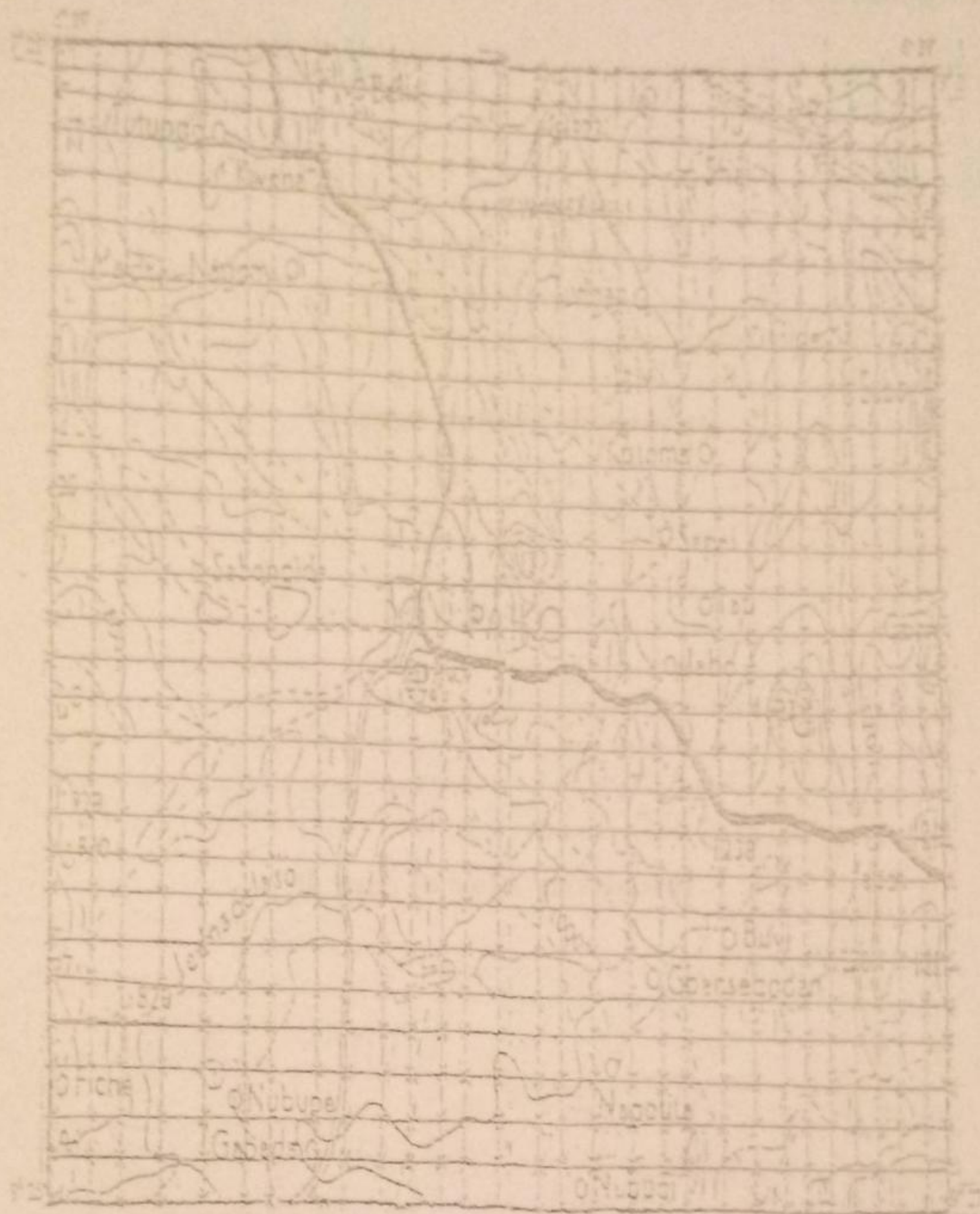


Figure 2: True resistivity (digitized) layer models for the study area

All items found in the bracket are called the Geometric factor and they depend on the array, other terms are read from the terrameter. The instrument used in this survey for data collection was terrameter SAS 300 DC, and for effective probing of the basement complex, maximum current electrode separation (AB) of 200 m, and potential electrode separation (MN) of 40 m were

used. The grid stations were located by the use of wooden pegs marked with red paint, and to cover the all area effectively, intervals of 100 m were used between each station points. Figure 3 shows the resistivity contour maps of the study area from which the geologic sections were obtained.

Data Interpretation

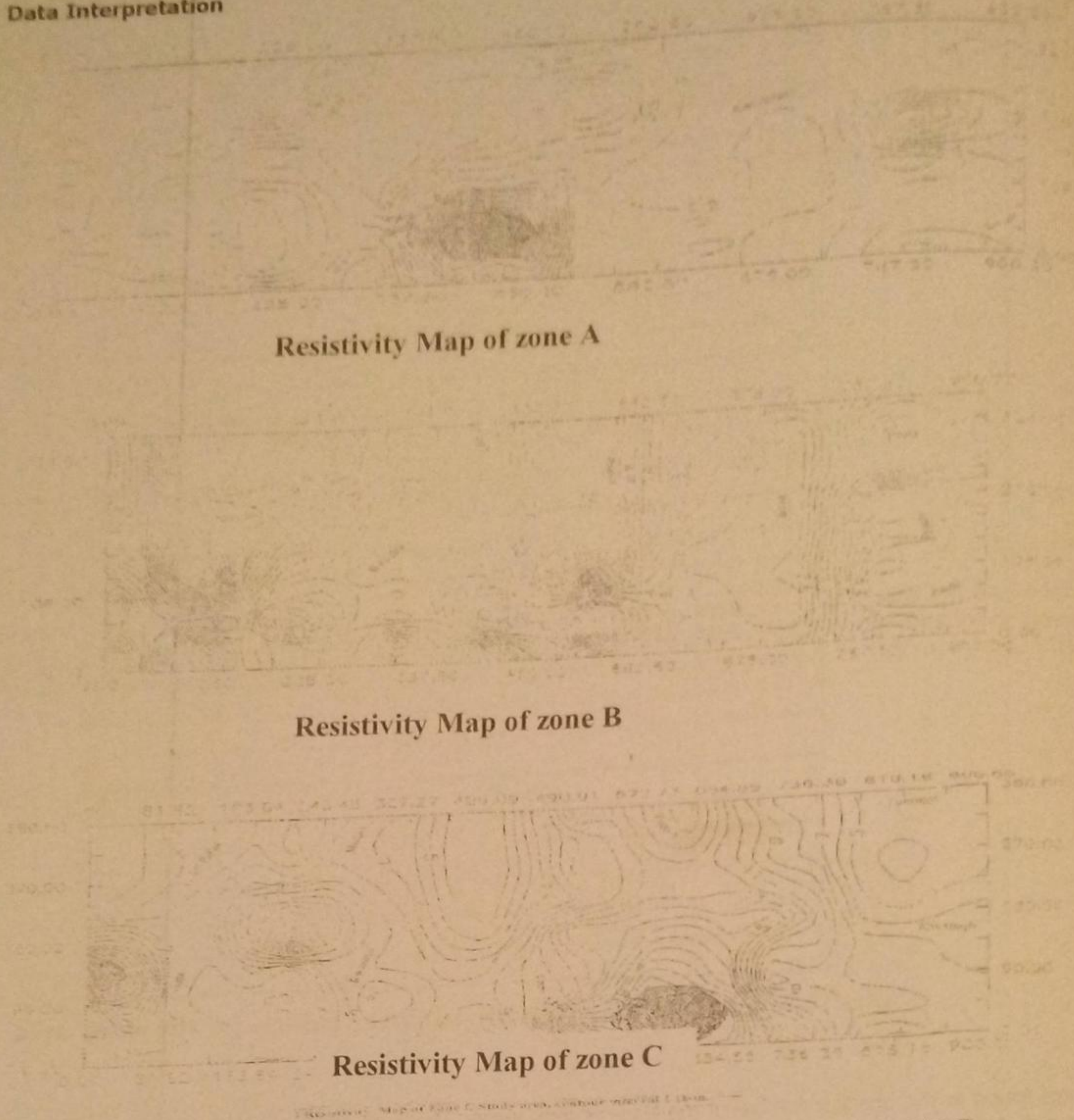


Figure 3: Resistivity Contour Maps of the study Area, interval 100Ωm

During the quantitative interpretation of this survey work, an interactive computer package designed by (Zhody *et al*, 1989) was employed. This package was able to reveal the resistivity curves, from which the number of layers, thicknesses and resistivity values were clearly shown. Samples of a typical digitized data and interpreted curves are shown (Figures 4a and b).

The geoelectric sections along the zones were obtained using the interpreted model parameter

(resistivity and thickness) for each VES stations. The VES stations were marked along the corresponding profiles and layer thickness beneath each sounding station and the resistivity were plotted. These derived geoelectric sections were subsequently used to obtain the geologic sections. It was possible to construct the equivalent subsurface geological sections from the contour maps of the zones.

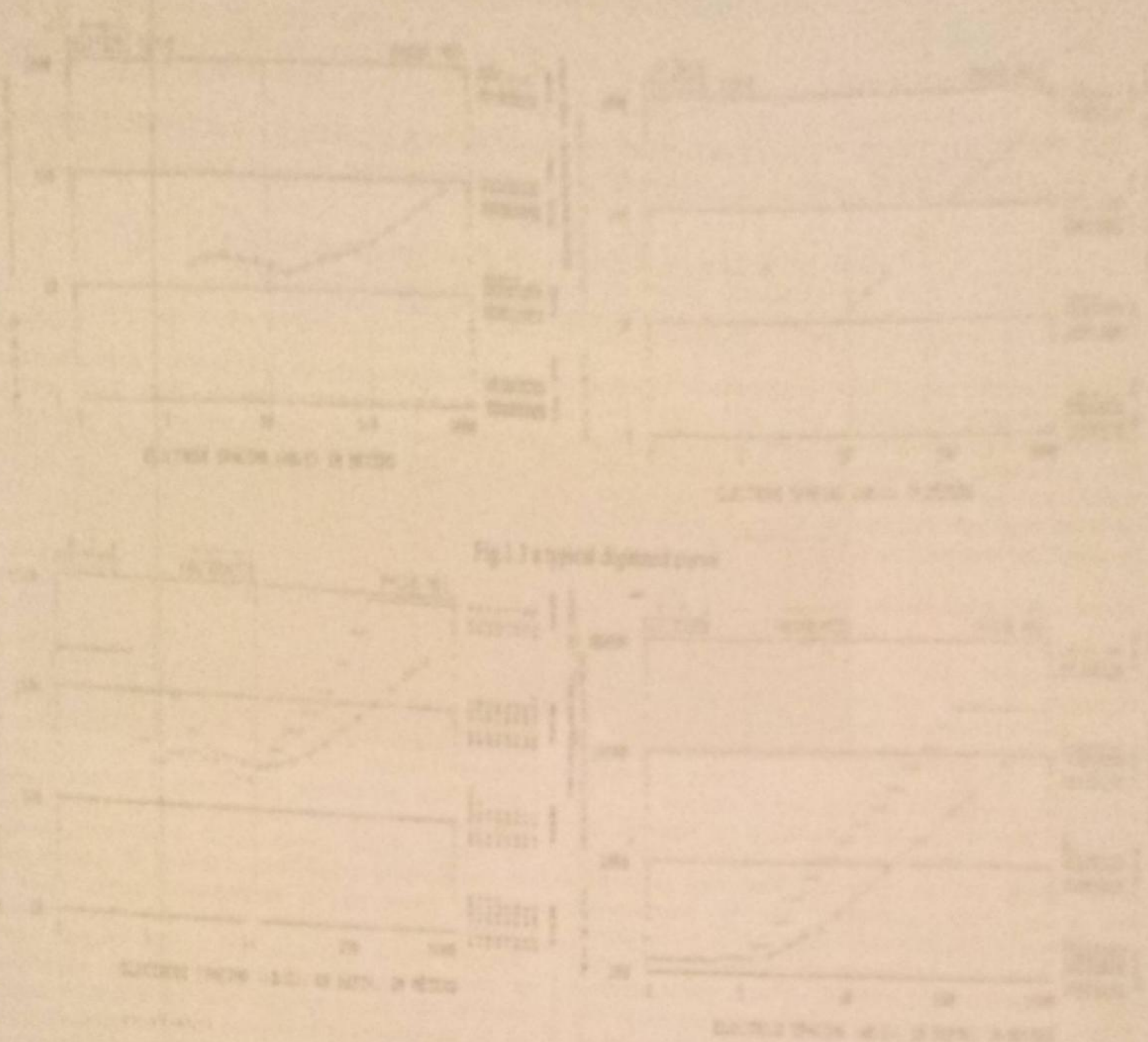


Figure 4: Digitized and Interpreted Curves

DISCUSSION

Going by the data interpretation of the geophysical survey, it can be said that: (1) Some areas are good and suitable for groundwater potentials, (i.e. VES 4 of zone A and VES 3 of zone C). (2) That the geological layers of the area are four. Lateritic, coarse sand, clay forms the first layer. Weathered basement, the second layer. Fractured basement form the third layer and fourth layer is the fresh basement. (3) thicknesses of the various lithologies were revealed and the average thicknesses of the weathered basement for zones were taken as, 9.00 m to 35.00 m, 10.00 m to 33.00 m and 7.00 m to 22.00 m for zones A, B and C respectively. (4) Various resistivity values ranging from the lowest 600 Ohm to the highest 7600 Ohm were

taken across the zones.(5) The geoelectric sections arrived at were four, given more credence to point two above (Figure 5).

CONCLUSION AND RECOMMENDATION

From the results put together, it is clear that Electrical resistivity method is very suitable and efficient. From the results, we have that four lithological layers were present in the area and that all other constituents were brought to focus. It is recommended that, borehole drillings be carried out in the area (VES 4 of zone A and VES 3 of zone C) and the water be certified well for drinking and for domestic use through standard scientific analysis.

- Laterite, clay
- Weathered basement
- Fractured basement
- Fresh basement

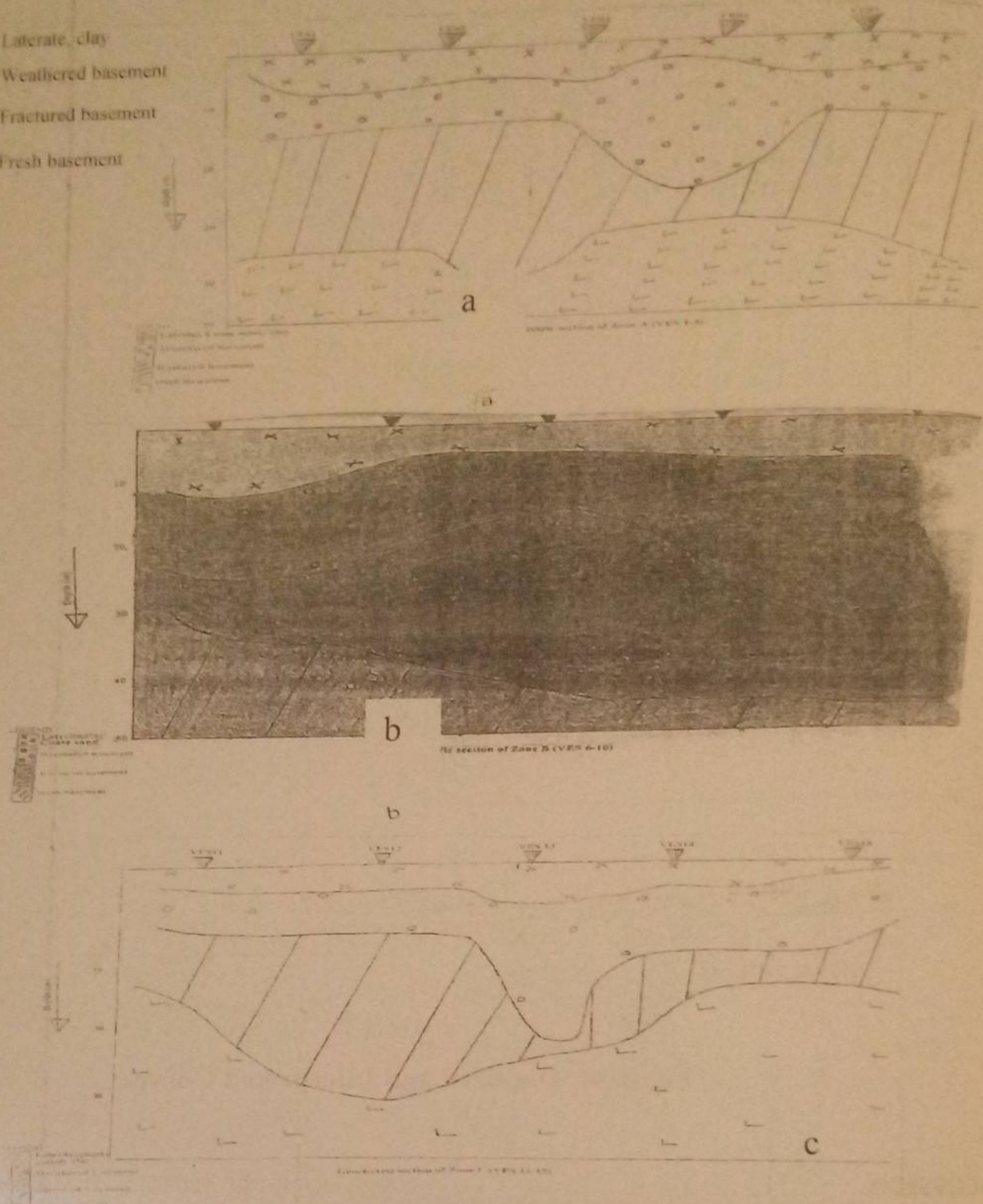


Figure 5: Geologic sections of the

REFERENCES

Ajibade, A.C (1980). The Geology of the country around Zungeru. Northwestern State of Nigeria. Unpublished M.Sc. Thesis, University of Ibadan, Ibadan.

Dangana, M.L and Emenike, E.A. (2009). Lithological deductions from geoelectric survey for subsurface water in Paiko Town, Niger State, Nigeria. Nigerian Journal of Technological Research Vol. 4 NO. 1 Pp74.83.

Emenike, E.A (2001). Geophysical exploration for groundwater in sedimentary environment: A case study from Nauka over Nauka formation in Anambra Basin Glo. Journal of Pure and Applied Science Vol. 7.Pp97-101.

Mallam, A. (2006). Regional Geoelectric Resistivity Survey in the Federal Capital Territory Nigeria. An unpublished Ph.D Thesis, University of Abuja.

McCurry, P. (1975). The Geology of the pre-cambrian to lower palozoic rocks of Northern Nigeria. Geology of Nigeria, Edited by C.A Kogbe. Pp56-67.

Ogilvy, A.A (1967). Geophysical prospecting for Groundwater in the Soviet Union, in Mining and Groundwater geophysics.

Parasmis, D.S (1986). Principles of Applied Geophysics (4th Ed., Chapman and Hall, New York.

Telford, M.W, Geldart, L.P., Keys D.A and Sheriff, R.A (1989). Applied Geophysics Cambridge University Press, Cambridge. Pp212-234.

Van-Breemen, R.A (1981). A Combining of Electrical Resistivity Seismic Refraction and Gravity Measurement for Groundwater exploration in Sudan. Geophysics 46, NO. 6, Pp1304-1311.

Zhody, A.A.R. and Bisdorf, R.J (1989). Automatic schlumberger Sounding Data processing and interpretation programme. U.S.A Geology Surveys Bell. 1313E. Washington.